



Stainless Lifter BXS Series




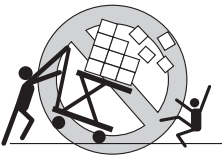


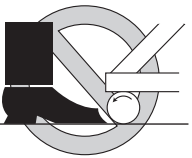



BXS10T, BXS20T


Operation and Service Manual

BEFORE OPERATING THE LIFTER, READ THIS MANUAL CAREFULLY AND UNDERSTAND COMPLETELY. KEEP THIS MANUAL ON FILE FOR FUTURE REFERENCE. IF THIS IS LOST, PLEASE CONTACT YOUR LOCAL SUPPLIER FOR A NEW COPY. ALSO, IF THE WARNING/CAUTION DECAL ON THE UNIT IS LOST, PLEASE CONTACT YOUR LOCAL SUPPLIER FOR A NEW DECAL.

NOTE: On this manual, WARNING means the danger which can lead to death or serious injury. CAUTION means the danger which can lead to slight injury or property damage.

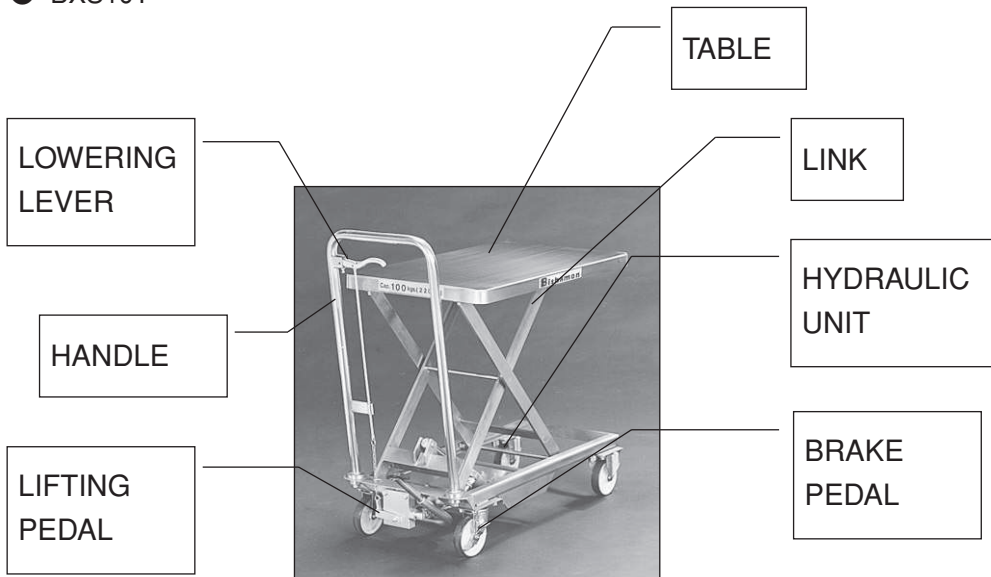
1. WARNINGS AND CAUTIONS

|  WARNING | | | | |
|--|---|---|--|--|
|  |  |  |  |  |
| DO NOT put foot or hand in scissors mechanism. | DO NOT allow other person to stand in front of or behind lifter when it is moving. | DO NOT move lifter when table is in raised position. Load could fall down. | DO NOT enter under table. | DO NOT overload lifter. |
|  |  |  |  | |
| DO NOT put foot in front of rolling wheels. Injury could result. | WATCH difference of floor level when moving lifter. Load could fall down. | DO NOT use lifter on slope or inclined surface. Lifter may become uncontrollable and create danger. | DO NOT lift people. People could fall down and suffer severe injury. | |

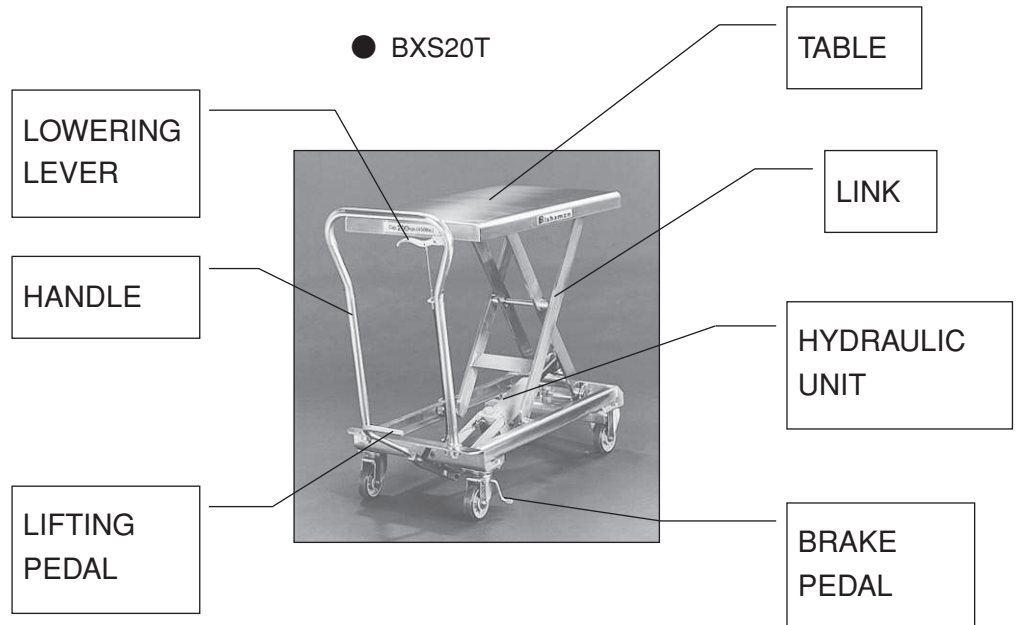
|  CAUTION |
|--|
| <ol style="list-style-type: none">1. Read this operation manual carefully and understand completely before operating lifter. Improper operation could create danger.2. This lifter is a movable lifter designed to lift or lower rated load on table. DO NOT use lifter for other purpose than its intended use.3. DO NOT allow person to operate lifter who does not understand its operation.4. DO NOT lower table too fast. Load could fall down and create danger.5. KEEP watching the condition of load. Stop operating lifter if load becomes unstable.6. Brake lifter when sliding load on or off table.7. DO NOT side or end load. Load must be distributed on at least 80% of table area.8. DO NOT use lifter with unstable, unbalanced or loosely stacked load.9. Practice maintenance work according to Service instructions.10. DO NOT modify lifter without manufacturer's written consent.11. REMOVE load from table and use safety stopper to prevent table from lowering when servicing lifter.12. This lifter is not designed to be water resistant. Use lifter under dry condition. |

2. NAME OF PARTS

● BXS10T



● BXS20T



3. DAILY INSPECTION

Daily inspection is effective to find the malfunction or fault on lifter. Check lifter on the following points before operation.

CAUTION

DO NOT use lifter if any malfunction or fault is found.

- (1) Check for scratch, bending or cracking on the lifter.
- (2) Check if there is any oil leakage from the cylinder.
- (3) Check the vertical creep of the table.
- (4) Check the smooth movement of the wheels.
- (5) Check the function of brake.
- (6) Check if all the bolts and nuts are tightened firmly.

4. OPERATING LIFTER

4-1. How to use the brake.

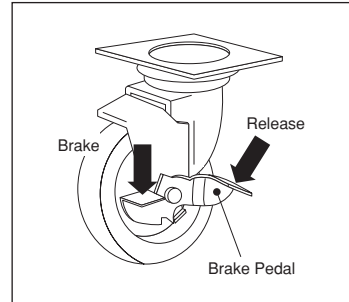
CAUTION

Brake lifter when not moving it in order to prevent sudden movement.

The brake is equipped with the swivel caster on the right side.

BXS10T

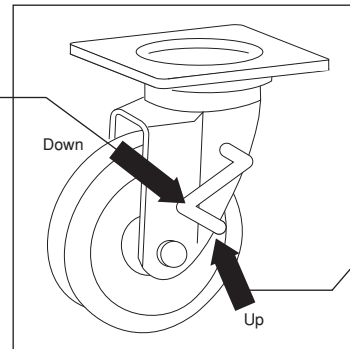
- (1) Braking the wheel
Press the brake pedal.
- (2) Releasing the brake
Press the other side of pedal.



BXS20T

- (1) Braking the wheel
Press the brake pedal.
- (2) Releasing the brake
Lift up the brake pedal.

Braking



Releasing
brake

4-2. Lifting the table

WARNING

1. DO NOT overload lifter. Stay within its rated capacity.
2. DO NOT side or end load. Load must be spread on at least 80% of table area.

Press the lifting pedal several times until the table reaches the desired position.

The table does not elevate after reaching the highest position even if the lifting pedal is pressed.

The table lowers slightly after reaching the highest position.

| MAXIMUM CAPACITY OF TABLE | |
|---------------------------|--------|
| BXS10T | BXS20T |
| 100kg | 200kg |

NOTE:

The hydraulic cylinder is designed to hold table. As is the nature of the hydraulic system, table lowers very slowly over an extended period of time. Please note the table does not stay at the same position indefinitely.

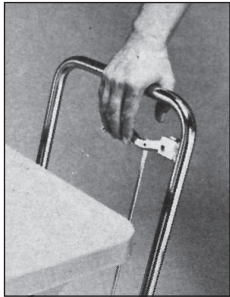
4-3. Lowering table



WARNING

DO NOT put foot or hand in scissors mechanism.

Pull the lowering lever up and table lowers.

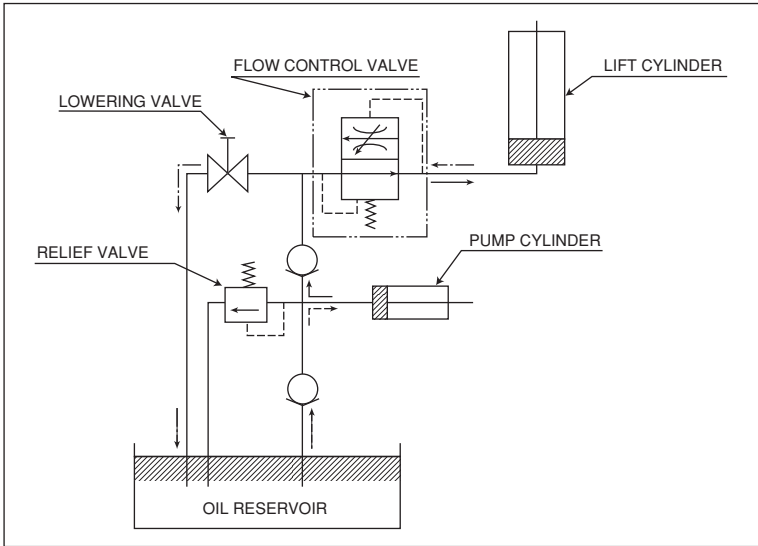


5. Specifications

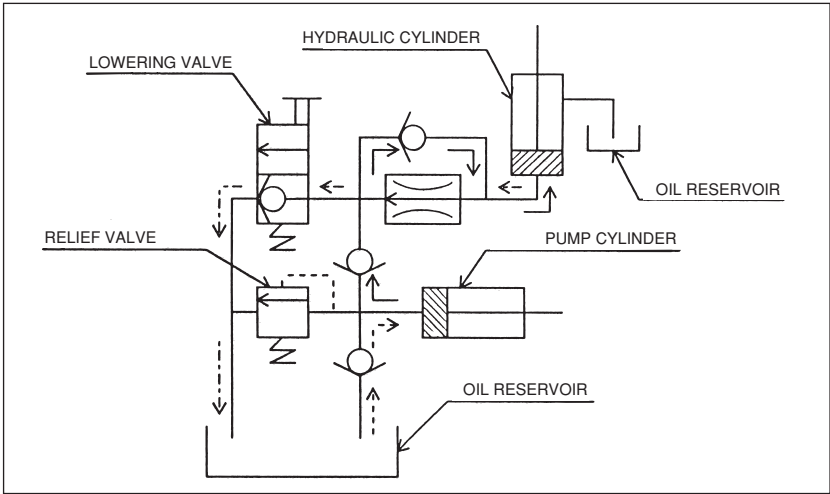
| Model | Capacity (kg) | Table (mm) | Table Height(mm) | Stroke (mm) | L×W×H (mm) | Pedaling (approx.times) | Wheel | Weight (kg) |
|--------|---------------|------------|------------------|-------------|--------------|-------------------------|----------|-------------|
| BXS10T | 100 | 450×700 | 213-731 | 518 | 820×450×860 | 15 | Rub.100φ | 33 |
| BXS20T | 200 | 520×815 | 288-865 | 577 | 900×500×1010 | 25 | PU100φ | 69 |

6. Hydraulic Circuit

BXS10T



BXS20T



- LIFTING→
- LOWERING→
- SUCTION→