

WAP/KEW acces. vacs, health & Safety

Model:
Accessories ALTO vacs

ACCESSORIES

Stückliste Deutsch

01-03-2015

Inhalt

WAP/KEW acces. vacs, health & Safety

Smart Windows Cleaner	3
Suction heads WD and WDC	5
Fix tool and multi-purpose tool, WD70 / WD90	7
Carpet- and upholstery tool, WDC - HobbyVac	9
Tubes WD and WDC	11
Hoses WD and WDC	13
Dust bags and filters WD/WDC	15
WD70-40, WD40-40 accessories - from 01. sep. 2000	17
Airbox 2010	19
Luftkammer	21
System 22 (ATTIX)	23
System 32 and 27 (ATTIX)	25
System 36 (ATTIX)	28
System 38 (ATTIX)	30
System 50 (ATTIX)	32
System 36 (2) (ATTIX)	34
Zubehörset 1- (außer Type 22)	36
Zubehörset 2 (außer Typ 22)	38
Large fixed floor nozzle	40
Large fixed floor nozzle 2	42
Turbo Nozzle	44
Electrical Turbo Nozzle	46

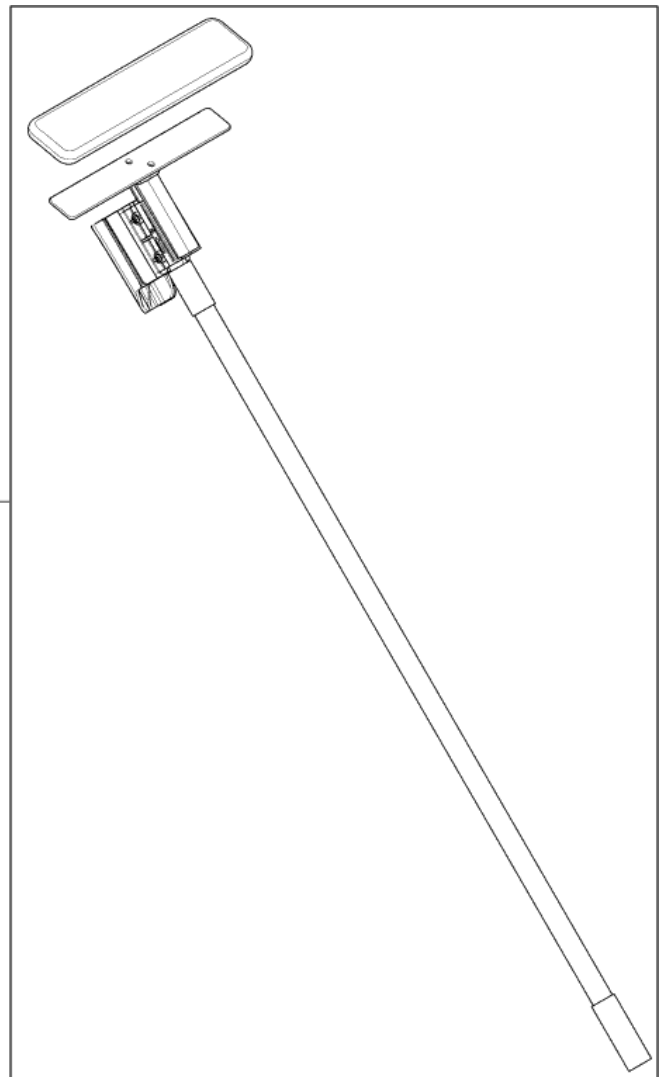
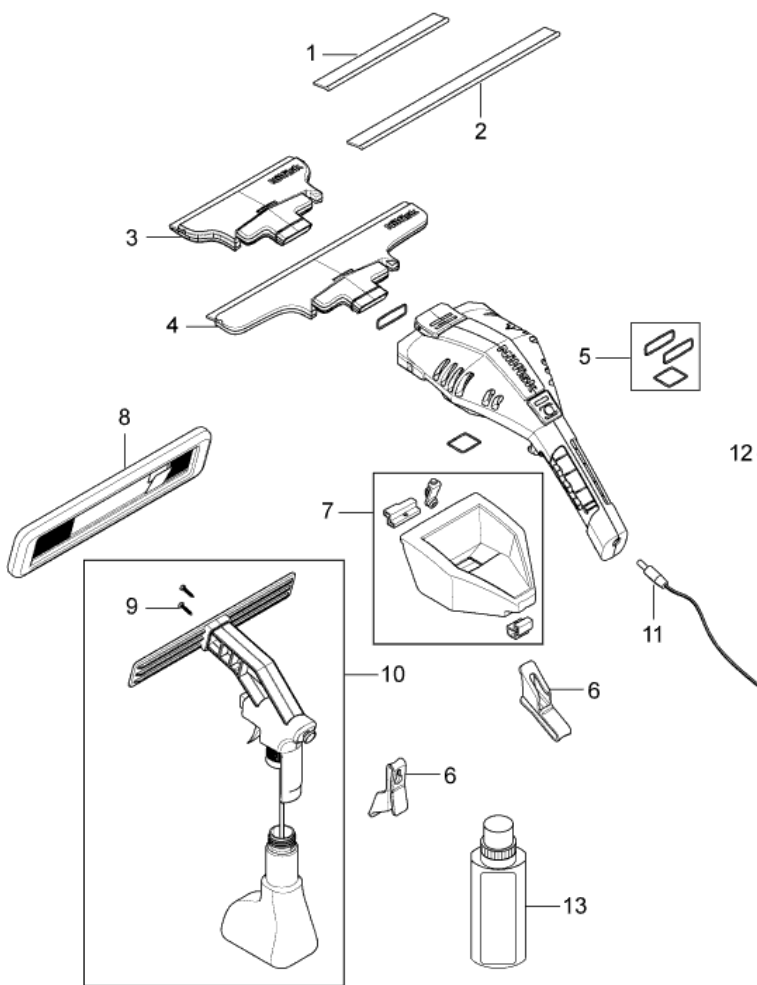
Smart Windows Cleaner

WAP/KEW acces. vacs, health & Safety

01-03-2015

ET-Liste-Nr.
WINDOWSCLEANER02

3



Smart Windows Cleaner

WAP/KEW acces. vacs, health & Safety

01-03-2015

ET-Liste-Nr.
WINDOWSCLEANER02

4

Pos	Artikelnr.	Me	Beschreibung
1	81943052	1	Smart Blade 170mm 1 pcs
2	81943051	1	Smart Ersatzsauglippe 280mm 1 pcs
3	81943053	1	Smart Suction 170mm 1 pcs
4	81943054	1	Smart Ersatzsaugdüse 280mm 1 pcs
5	31000880	1	O-RING KIT
6	31000881	1	BELT STORAGE CLIP
7	31000882	1	WATER CONTAINER W FITTINGS
8	81943055	1	Smart Microfasertuch, 2 pcs
9	31000883	1	SCREW 2 PCS
10	31000884	1	SPRAYER AND BOTTLE
11	31000885	1	CHARGER EU/CN
11	31000886	1	CHARGER UK
11	31000887	1	CHARGER AU/NZ
12	81943057	1	Smart Verlängerung
13	81943056	1	Smart Reinigungsmittel Shine 500ml

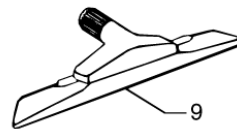
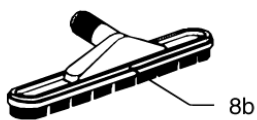
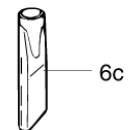
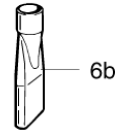
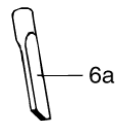
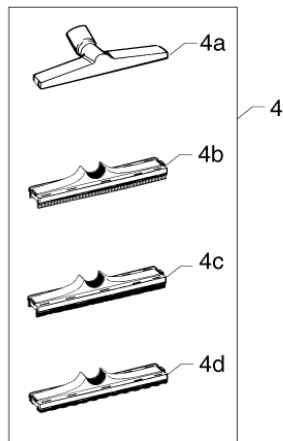
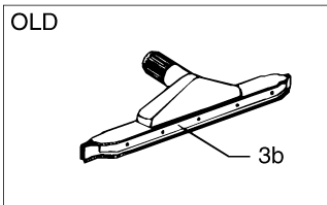
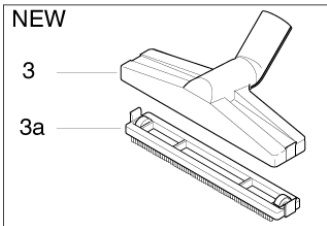
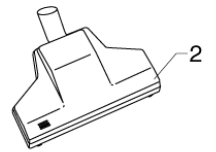
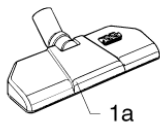
Suction heads WD and WDC

WAP/KEW acces. vacs, health & Safety

01-03-2015

ET-Liste-Nr.
ACCESWD02

5



Suction heads WD and WDC

WAP/KEW acces. vacs, health & Safety

01-03-2015

ET-Liste-Nr.
ACCESWU02

6

Pos	Artikelnr.	Me	Beschreibung	
2	54118	1	Turbinen-Teppichsaugbürste	ī36
3	7090904	1	LIQUID SUCTION HEAD	ī36
5	5146	1	Saugpinsel	ī36
7	7090928	1	Reduktionsstueck ø40 - ø36	ī40/ī36
9	7090935	1	CARPET TOOL 420MM/Ø 38 WD	ī40
10	7090903	1	UPHOLSTERY TOOL	ī40/ī36
1A	8046	1	Kombidüse	ī36
1B	8046	1	Kombidüse	WDC
3A	7090834	1	GOMMISCHIENE L=395	ī40
3B	7090936	1	RUBBER TAIL	ī40
4A	8046	1	Kombidüse	ī40
4B	7090904	1	LIQUID SUCTION HEAD	ī36
4C	7090919	1	BRUSH ADAPTOR	ī36
4D	8046	1	Kombidüse	ī36
6A	7090902	1	CREVICE TOOL	ī36
6B	7090927	1	Fugenduese ø40	ī40
6C	7090820	1	Fugenduese kompl. 50	ī50
8A	7090929	1	BRUSH TOOL	ī36
8B	7090925	1	SUCTION HEAD. DRY PICK UP	ī40
1AA	7091048	1	RING	ī36

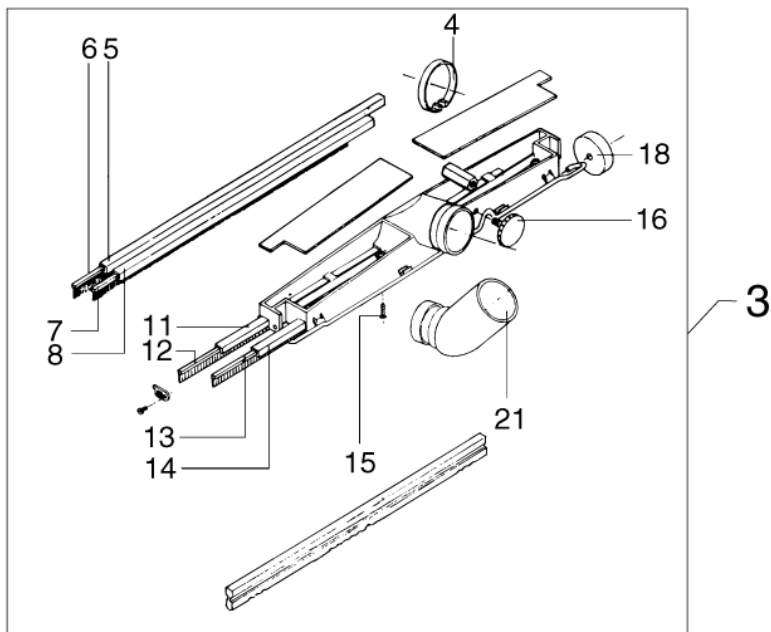
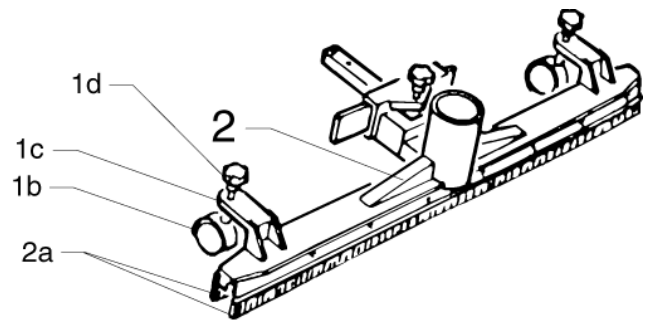
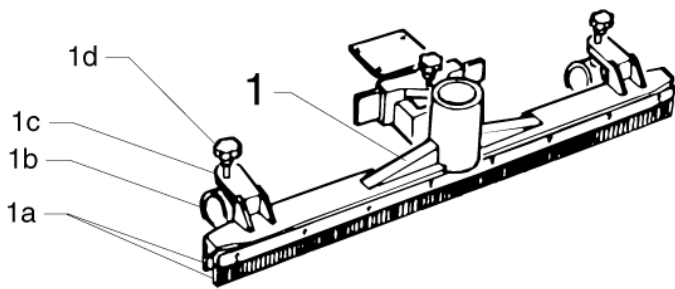
Fix tool and multi-purpose tool, WD70 / WD9

WAP/KEW acces. vacs, health & Safety

01-03-2015

ET-Liste-Nr.
ACCESWD04

7



Fix tool and multi-purpose tool, WD70 / WD9

WAP/KEW acces. vacs, health & Safety

01-03-2015

ET-Liste-Nr.
ACCESWD04

8

Pos	Artikelnr.	Me	Beschreibung	
1	7090811	1	WET FIX TOOL	WD70, WD90
2	7090812	1	BRUSH FIX TOOL WD70	WD70, WD90
3	7090821	1	MULTI-PURPOSE TOOL Ø 50	WD70
15	7090835	1	SCREW M 5X20	WD70
16	7090836	1	KNURLED SCREW M 8X25	WD70
18	7090838	1	Rad	WD70
1A	7090815	1	REP. KIT RUBBER RAILS -FI	WD70, WD90
1B	7090819	1	WHEEL	WD70, WD90
1C		1	NOTE COMMENT	WD70, WD90
1D		1	NOTE COMMENT	WD70, WD90
21	7090842	1	TWIST COUPLING Ø 50	WD70
2A	7090814	1	REP. KIT BRUSHES - FIX 41	WD70, WD90
2B	7090819	1	WHEEL	WD70, WD90
2C		1	NOTE COMMENT	WD70, WD90
2D		1	NOTE COMMENT	WD70, WD90
5-6	7090829	1	Bürstensegment L=440	WD70
7-8	7090830	1	BRUSH-CLEAT L 395	WD70
11-	7090833	1	Gummischiene L=440	WD70
13-	7090834	1	GOMMISCHIENE L=395	WD70

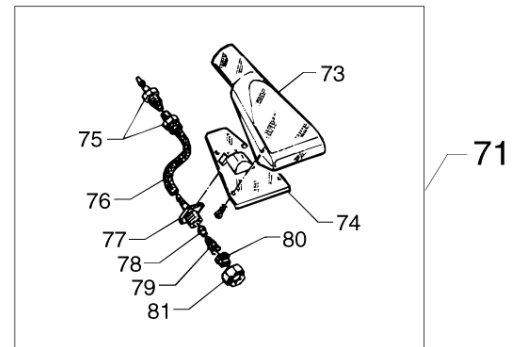
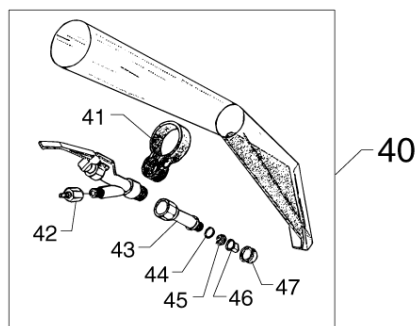
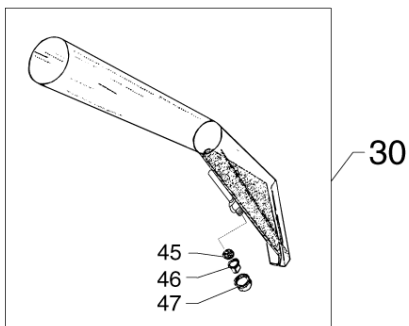
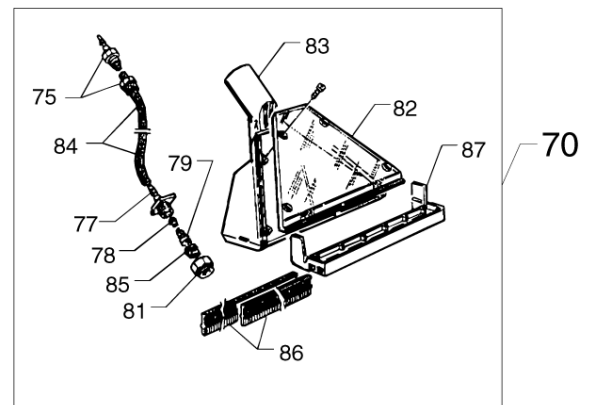
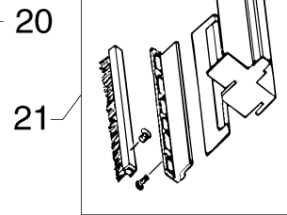
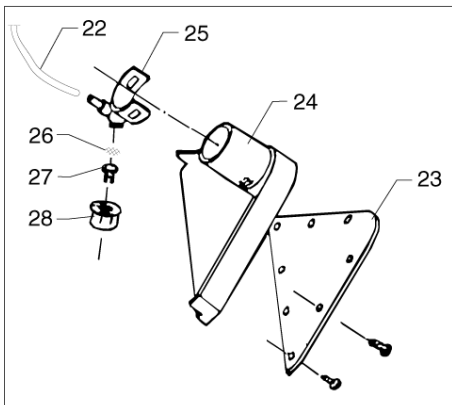
Carpet- and upholstery tool, WDC - HobbyVa

WAP/KEW acces. vacs, health & Safety

01-03-2015

ET-Liste-Nr.
ACCESWD06

9



Carpet- and upholstery tool, WDC - HobbyVa

WAP/KEW acces. vacs, health & Safety

01-03-2015

ET-Liste-Nr.
ACCESWD06

10

Pos	Artikelnr.	Me	Beschreibung	
20	7090840	1	CARPET CLEANING TOOL	WDC30, WDC40
21	7090841	1	LIQUID RISER	WDC30, WDC40
22	7090869	1	HOSE 8X5. L 1090	WDC30, WDC40
23	7090863	1	COVER FOR CLEANING TOOL	WDC30, WDC40
24	7090862	1	CARPET CLEANING TOOL. WDC	WDC30, WDC40
25	7090865	1	NOZZLE HOLDER	WDC30, WDC40
26	7090861	1	FILTER FOR UPHOLSTERY CLEA	WDC30, WDC40
27	7090785	1	NOZZLE RED	WDC30, WDC40
28	7090864	1	NOZZLE CAP 3/8 WDC	WDC30, WDC40
41	7090868	1	CLAMP FOR HANDLE	WDC30, WDC40
42	7090870	1	QUICK COUPLING NIPPLE. ME	WDC30, WDC40
43	7090867	1	EXTENSION 3/8-1/4 WDC	WDC30, WDC40
44	7090866	1	WASHER 15X9.5X1.5	WDC30, WDC40
45	7090861	1	FILTER FOR UPHOLSTERY CLEA	WDC30, WDC40
46	7090780	1	NOZZLE - ORANGE	WDC30, WDC40
70	7090790	1	CARPET CLEANING TOOL HOBB	HOBBYVAC
71	7090791	1	UPHOLSTERY TOOL HOBBYVAC	HOBBYVAC
73	7090773	1	POLSTERREINIGUNGS-ZUBEHÖR	HOBBYVAC
74	7090774	1	DECKEL F, DueSE, KLEIN	HOBBYVAC
75	7090775	1	COUPELER	HOBBYVAC
76	7090776	1	PLASTIC HOSE 85MM.	HOBBYVAC
77	7090777	1	NOZZLE HOUSING.	HOBBYVAC
78	7090778	1	RUBBER ANTI DROP.	HOBBYVAC
79	7090779	1	SPRING	HOBBYVAC
80	7090780	1	NOZZLE - ORANGE	HOBBYVAC
81	7090781	1	TREADED BUSH	HOBBYVAC
82	7090782	1	COVER CLEANING TOOL. LARG	HOBBYVAC
83	7090783	1	CARPET CLEANING TOOL	HOBBYVAC
84	7090784	1	PLASTIC HOSE 980MM	HOBBYVAC
85	7090785	1	NOZZLE RED	HOBBYVAC
86	7090786	1	RUBBER STRIPS	HOBBYVAC
87	7090787	1	LIQUID RISER	HOBBYVAC

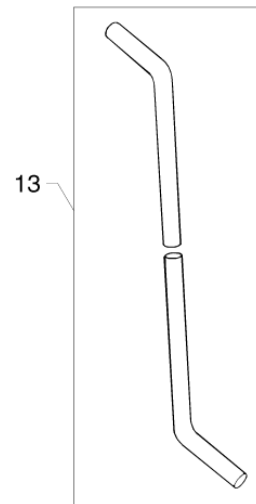
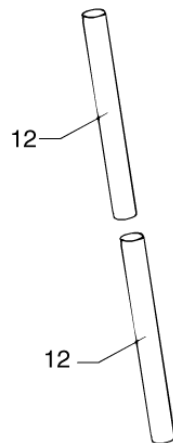
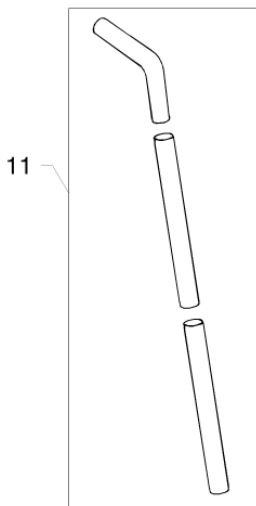
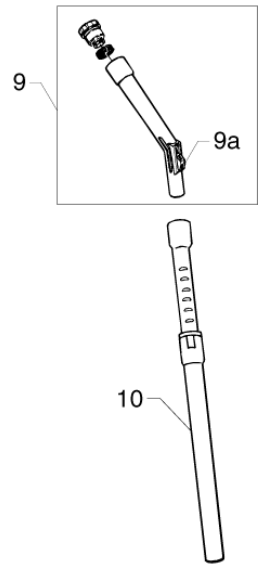
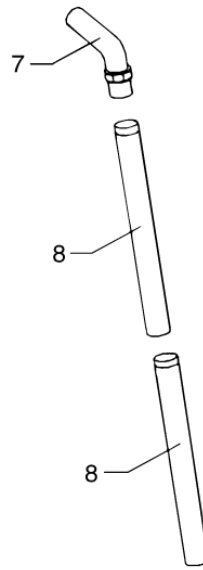
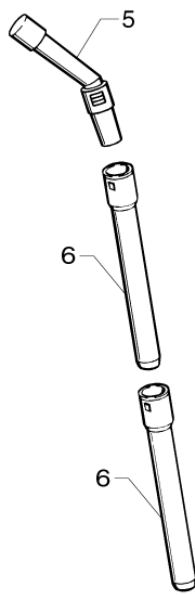
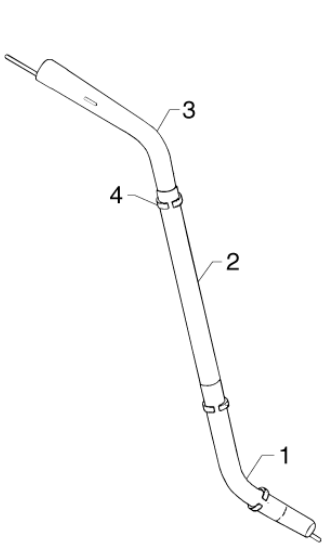
Tubes WD and WDC

WAP/KEW acces. vacs, health & Safety

01-03-2015

ET-Liste-Nr.
ACCESWD08

11



Tubes WD and WDC

WAP/KEW acces. vacs, health & Safety

01-03-2015

ET-Liste-Nr.
ACCESWD08

12

Pos	Artikelnr.	Me	Beschreibung	
1	7090845	1	PLASTIC BASE	WDC30
2	7090844	1	ALUMINIUM TUBE	WDC30
3	7090871	1	BENDED HANDLE	WDC30, WDC40
4	7090847	1	HOSE CLIP	WDC30
5	7090885	1	Griff m. Lueftungsklappe Wet&Dry	İ36
6	7090906	1	Verchromtes Rohr 0,5m	WET&DRY, HOBBYVAC
7	7090905	1	HANDLE WITH SUCTION REGUL	İ36
8	7090906	1	Verchromtes Rohr 0,5m	İ36
9	7090765	1	HANDLE W. SUCTION REGULAT	HOBBYVAC
10	47109	1	SAUGROHR DN36 TELESKOP VA	İ36
11	7090810	1	Verchromtes Rohr 50	İ50
12	7090921	1	PLASTIC TUBE Ø 36	İ36
12	7090934	1	EXTENSION TUBE. PLASTIC	İ40
13	7090930	1	KIT FOR EXTENSION TUBES	İ40
9A	7090766	1	KNOB FOR SUCTION REGULATIO	HOBBYVAC

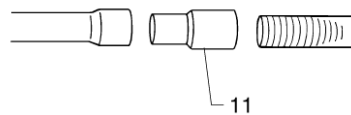
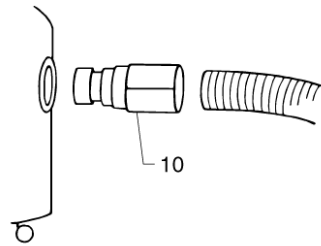
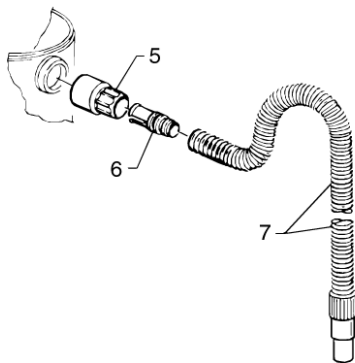
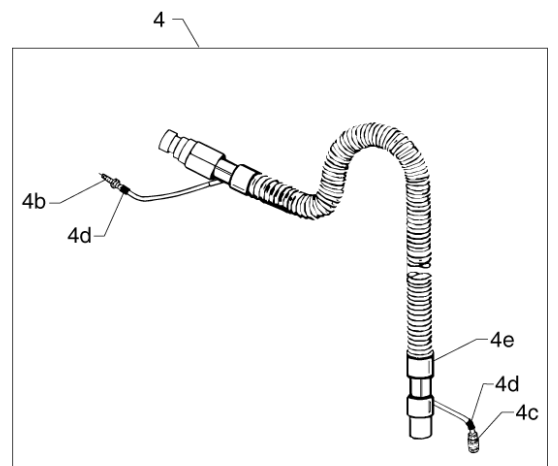
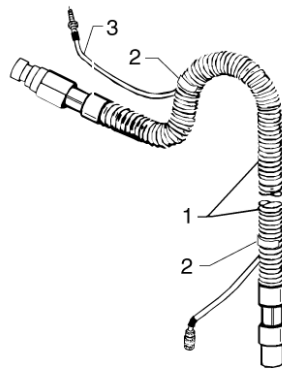
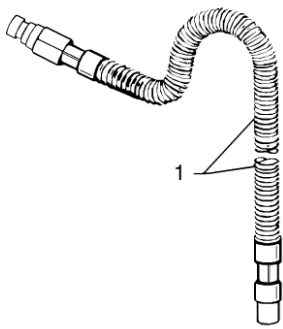
Hoses WD and WDC

WAP/KEW acces. vacs, health & Safety

01-03-2015

ET-Liste-Nr.
ACCESWD10

13



Hoses WD and WDC

WAP/KEW acces. vacs, health & Safety

01-03-2015

ET-Liste-Nr.
ACCESWD10

14

Pos	Artikelnr.	Me	Beschreibung	
1	7090800	1	FLEXIBLE HOSE COMPL. 2.5M	ī50
1	7090848	1	Flexibler Schlauch kompl. 36	ī36
1	7090931	1	Saugschlauch DN 38x 2,5m	ī40
2	7090850	1	HOSE CLIP	WDC30
3	7090846	1	RILSAN HOSE	WDC30
3	7090851	1	HOSE WITH SCREW COUPLING	WDC30
4	7090940	1	FLEXIBLE HOSE 4.5M Ø 40	WDC40
5	7090880	1	TWIST COUPLING. WET AND DRY	WET&DRY, HOBBYVAC, WDA
6	7090881	1	SLEEVE FOR TWIST COUPLING.	WET&DRY, HOBBYVAC, WDA
7	7090757	1	FLEXIBLE HOSE 2.5WITH Ø 36 M	WET&DRY, HOBBYVAC, WDA
10	7090802	1	Schlauchverbinder 40-50	ī50
10	7090803	1	HOSE COUPLING Ø 50 - WD70	ī50
10	7090912	1	Schlauchkupplung 36-WD30	ī36
10	7090942	1	HOSE COUPLING Ø 38 - WD40	ī40
11	7090804	1	Schlauchkupplung 50-WD70 Rohr	ī50
11	7090913	1	Schlauchverbindung durchsch. 36-rohr	ī36
11	7090943	1	Schlauchkupplung 38-WD40Rohr	ī40
12	7090952	1	ADAPTOR	WDA
4B	7090946	1	QUICK COUPLING METAL -MAL	WDC40
4C	7090947	1	QUICK COUPLING METAL -FEM	WDC40
4D	7090948	1	BAND CLAMP FITTING	WDC40

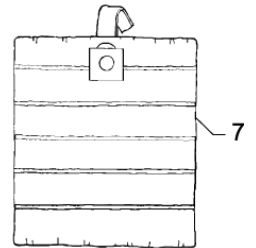
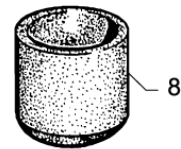
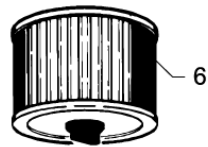
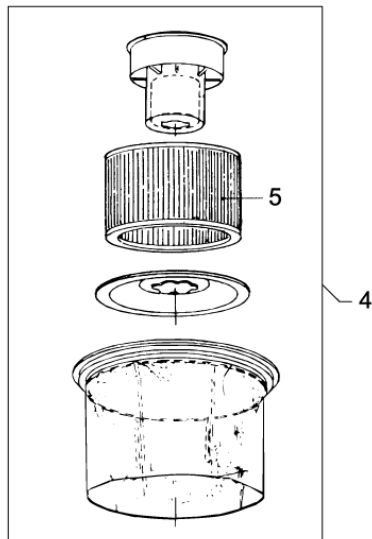
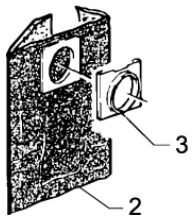
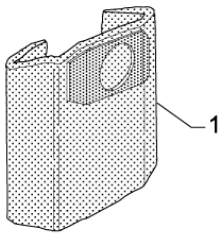
Dust bags and filters WD/WDC

WAP/KEW acces. vacs, health & Safety

01-03-2015

ET-Liste-Nr.
ACCESWD12

15



Dust bags and filters WD/WDC

WAP/KEW acces. vacs, health & Safety

01-03-2015

ET-Liste-Nr.
ACCESWD12

16

Pos	Artikelnr.	Me	Beschreibung	
1	29970	1	Filtersack VPE 5 St aero 5/700	WD30, WD40, WDC30, WDC40
1	7090569	1	Filtersack WD VPE1	WD70, WD90
2	6411094	1	Filtersack VPE 5	WET&DRY, HOBBYVAC, WDA
3	7090673	1	RING FOR HOSE INLET. WAND	WET&DRY, HOBBYVAC, WDA
4	7090620	1	HEPA-FILTER KIT COMPL. WD	WD30, WD40, WDC30, WDC40
5	7090564	1	HEPA CARTRIDGE FILTER. WD	WD70, WD90
5	7090621	1	HEPA FILTER H122. WD30/40	WD30, WD40
6	7090608	1	Filterpatrone	WD30/40/70/90, WDA
6	7090626	1	CARTRIDGE FILTER WET DRY	WET&DRY, HOBBYVAC, WDA
6	7090792	1	Deckelscheibe für Filterelement "WDC"	Not shown
7	7090807	1	HEAVY DUTY DUST BAG WD70	WD70, WD90
7	7090809	1	3 PCS UNIVERSAL DUST BAG	WD40, WDC40
8	7090627	1	Poly urethanfilter, W&D	WET&DRY, HOBBYVAC, WDA
10	7090960	1	DUST BAG. NYLON	WDA

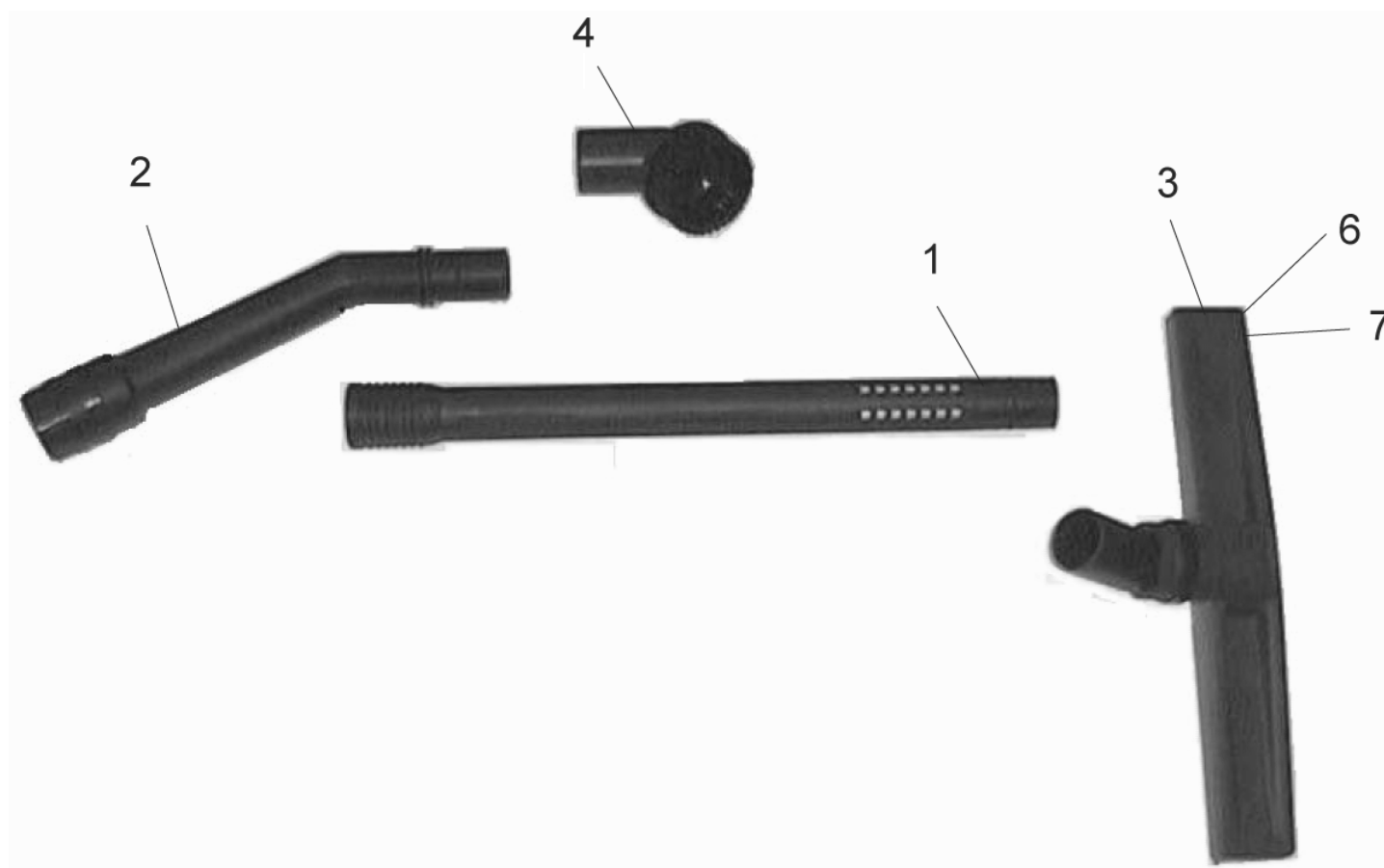
WD70-40, WD40-40 accessories - from 01. sep. 2

WAP/KEW acces. vacs, health & Safety

01-03-2015

ET-Liste-Nr.
ACCESWD14

17



WD70-40, WD40-40 accessories - from 01. sep. 2

WAP/KEW acces. vacs, health & Safety

01-03-2015

ET-Liste-Nr.
ACCESWD14

18

Pos	Artikelnr.	Me	Beschreibung
1	107091052	1	EXTENSION PIPE
2	7090995	1	CURVED PLASTIC WAND WD70-
3	107091055	1	WET TOOL CURVED
4	107091054	1	SUCTION BRUSH
5	107091053	1	ADAPTOR
6	7090830	1	BRUSH-CLEAT L 395
7	7090834	1	GOMMISCHIENE L=395

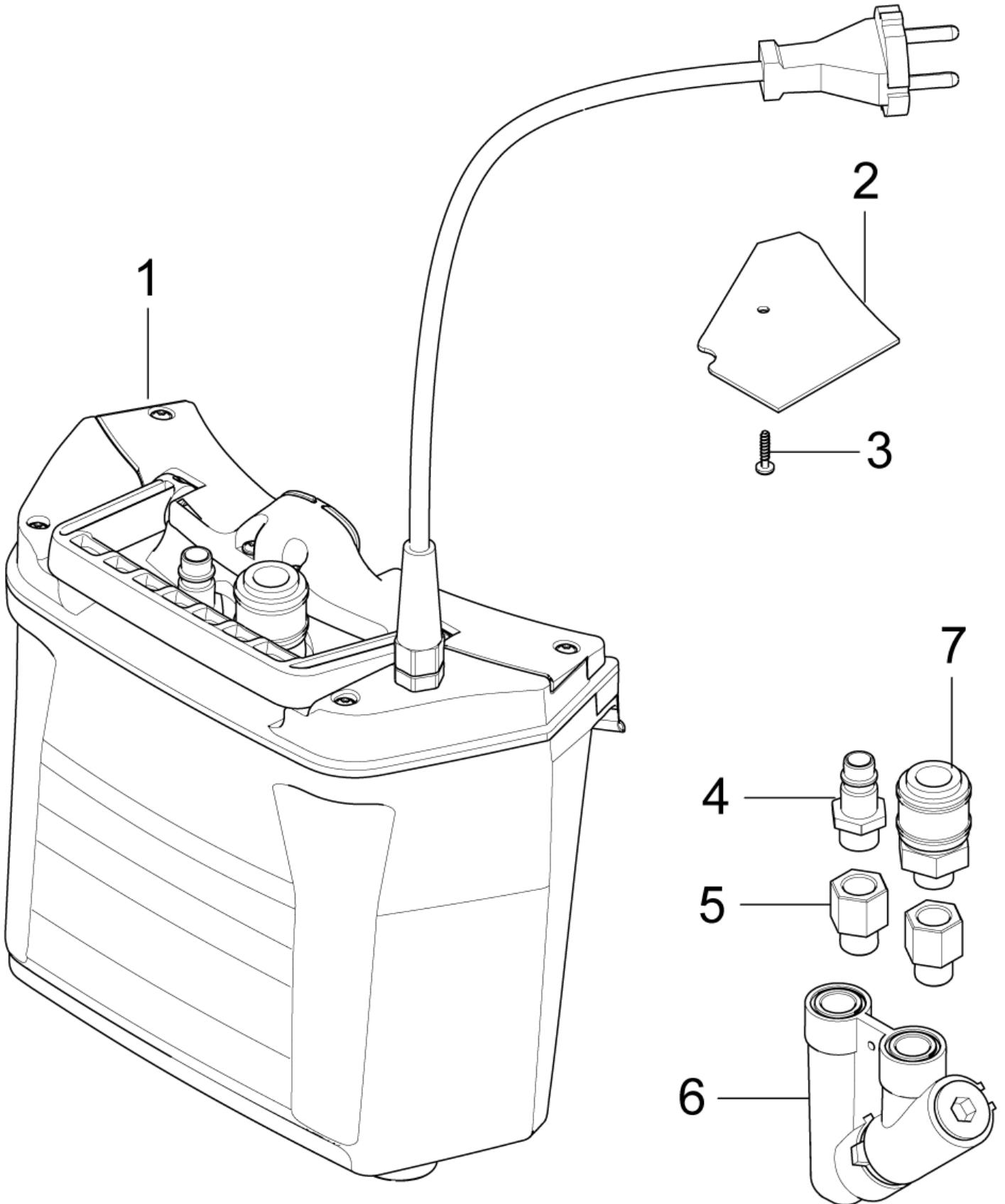
Airbox 2010

WAP/KEW acces. vacs, health & Safety

01-03-2015

ET-Liste-Nr.
AIRBOX04

19



Airbox 2010

WAP/KEW acces. vacs, health & Safety

01-03-2015

ET-Liste-Nr.
AIRBOX04

20

Pos	Artikelnr.	Me	Beschreibung
1	107400079	1	AIRBOX 230V 50 HZ EU
1	107400394	1	AIRBOX 120V 60 HZ US
2	107403700	1	CIRCUIT BOARD AIRBOX 230V
2	107403701	1	CIRCUIT BOARD AIRBOX 120V US
3	1814598	1	Schraube P3x14
4	14809	1	Kupplungsstecker G1/4"
5	25437	2	Muffennippel G1/4-R1/4
6	107402622	1	Strömungswächter KIT
7	14808	1	Schlauchkupplung G1/4"

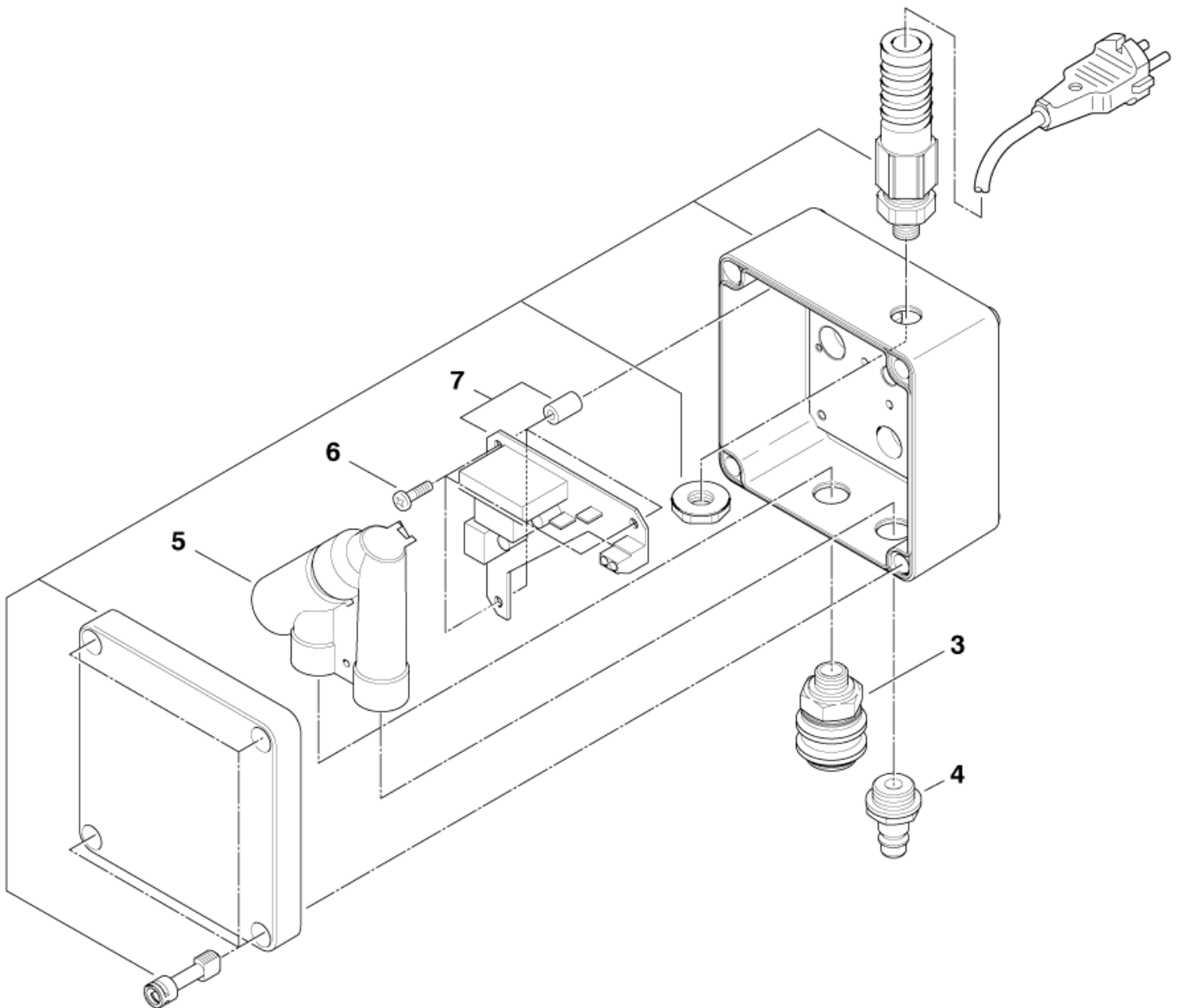
Luftkammer

WAP/KEW acces. vacs, health & Safety

01-03-2015

ET-Liste-Nr.
AIRBOX02

21



Luftkammer

WAP/KEW acces. vacs, health & Safety

01-03-2015

ET-Liste-Nr.
AIRBOX02

22

Pos	Artikelnr.	Me	Beschreibung
0	302001192	1	Pneumatikbox f. Druckluftwz. 150x100x6 Complete box as Accessory
3	14808	1	Schlauchkupplung G1/4"
4	14809	1	Kupplungsstecker G1/4"
5	107402622	1	Strömungswächter KIT
6	11356	3	Schraube P4x14
7	302001380	1	Elektronik AIRBOX 230V/50Hz

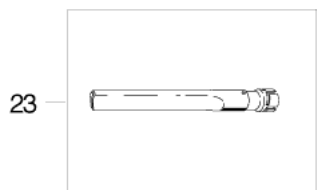
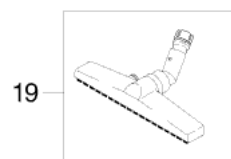
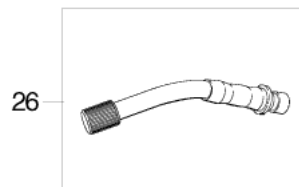
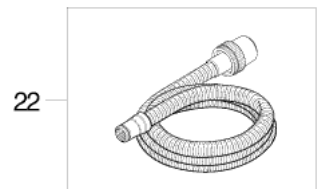
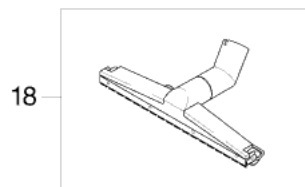
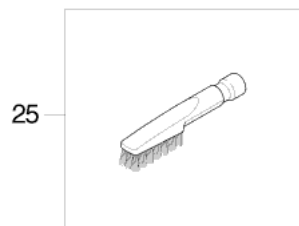
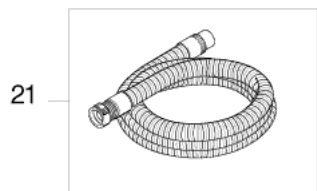
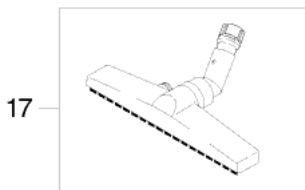
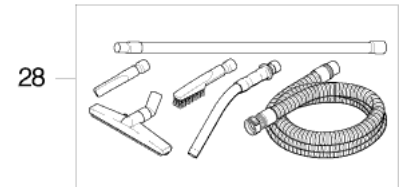
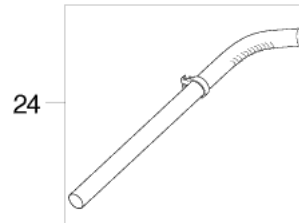
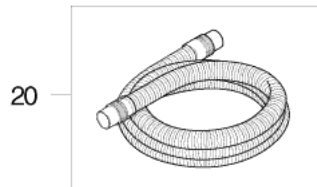
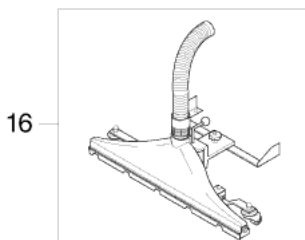
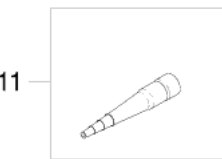
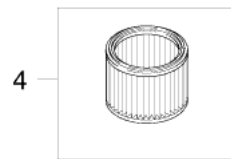
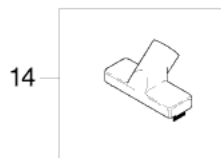
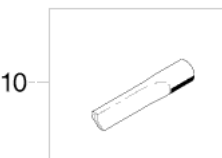
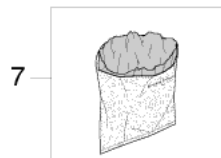
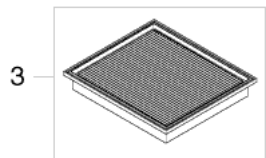
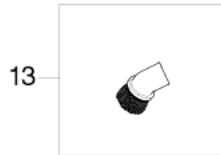
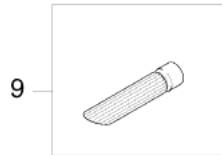
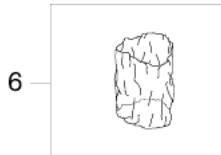
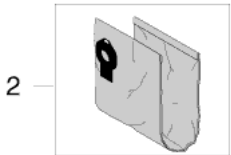
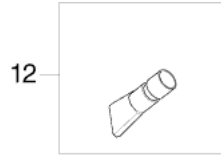
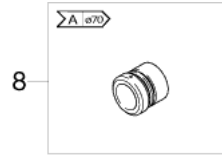
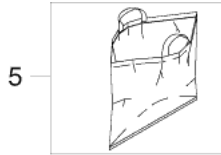
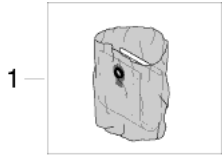
System 22 (ATTIX)

WAP/KEW acces. vacs, health & Safety

01-03-2015

ET-Liste-Nr.
SYSTEM22

23



System 22 (ATTIX)

WAP/KEW acces. vacs, health & Safety

01-03-2015

ET-Liste-Nr.
SYS1EMZZ

24

Pos	Artikelnr.	Me	Beschreibung	
1	33209	1	Filtersack Si VPE 5St M2S-FA	5 PCS. - TURBO
2	302001484	1	Filtersack "ATTIX 7" Set-5Stück	5 PCS. - SQ890-3M/B1
2	302001871	1	Filtervlies 0,7x150x100 "B1" Set[5x]	
2	61603	1	Filtersack VPE5 "SQ8"	5 PCS. - TURBO
3	61604	1	Filterelement "M" flach	
4	26736	1	Filter Spezial- UP/PTFE	DYNAMICS
5	107402626	1	Entnahmesack Set	SQ890-3M/B1
6	30082	1	Filterschutzbeutel Set [10x]	10 PCS.
7	29727	1	Sicherheits-Entsorg.Sack	DYNAMICS
8	29726	1	Reduzierung D70-50 MS B1	AX, 170
9	302000227	1	Schrägrohrdüse DN 36 B1 Gumm	HX
9	42836	1	Duese Schraegrohr DN50 B1	BX
10	42837	1	Duese Fugen DN50 B	BX
11	42838	1	NOZZLE ROUND RUBBER	BX
12	42839	1	Duese Flach DN50	BX
13	42831	1	Saugpinsel B1	BX
14	42835	1	Duese Grobschmutz DN 50	BX
15	48066	1	Rohrreinigungsduese 70-120 B1	HX
15	48067	1	Rohrreinigungsduese 120-200 B1	HX
16	302001481	1	Fahrdüse B1 600mm ATTIX 7 Set-	BX
17	302000369	1	Großraumbodendüse DN36x450 B1 AI/V	HX
18	42834	1	Duese Ind.-Rollen DN 50	BX
19	302000369	1	Großraumbodendüse DN36x450 B1 AI/V	HX
20	42825	1	Saugschlauch 50x 4000 Spaene- B1	BX
20	42830	1	HOSE Ø 50X4000MM METAL B1	BX
20	43245	1	Saugschlauch 50x 4000 AS	BX
20	63710	1	Saug-SHL 50x 8000 KPL.m.MUFF B1/AS Spae	BX
20	63711	1	HOSE Ø 50X12000MM CHIP TYPE 22	BX
20	63712	1	HOSE Ø50X16000 ABRAS RESI	BX
20	63713	1	HOSE Ø 50X20000MM CHIP TYPE 22	BX
21	44193	1	Saugschlauch 36x 4000 B1	HX - AX
22	48131	1	Saugschlauch 32x 5000 B1	
22	48132	1	Saugschlauch Ø27x3500 "B1"	KX - AX
23	44192	1	Fugenduese DN 36 B1	HX
24	33609	1	Verlaengerunsrohr DN50 B1	BX
25	44191	1	Buerstenduese	HX
26	44188	1	Handrohr gebogen DN36 B1 VA	HX
27	46982	1	Saugrohr D 36 B1	HX
28	48907	1	Zubehoerset Wap SSR	

System 32 and 27 (ATTIX)

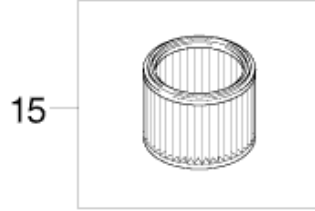
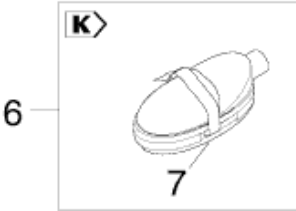
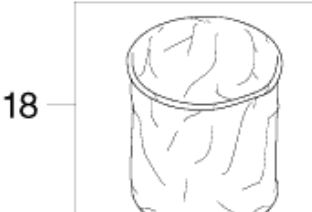
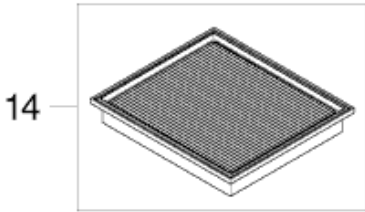
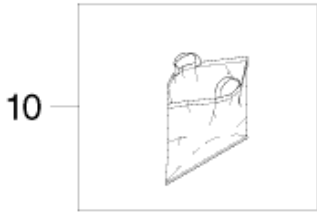
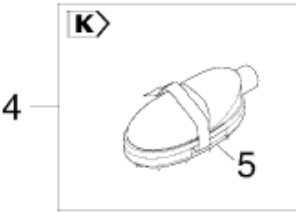
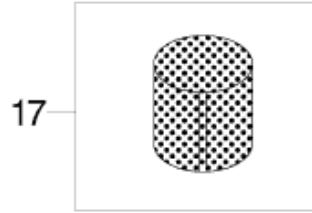
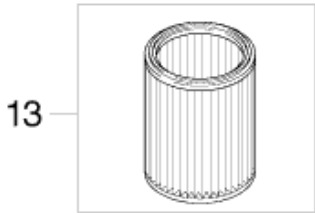
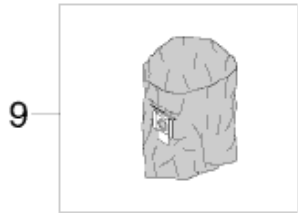
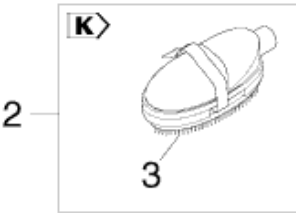
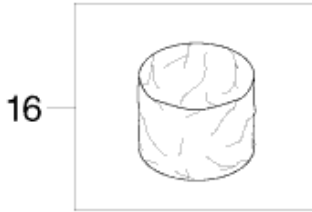
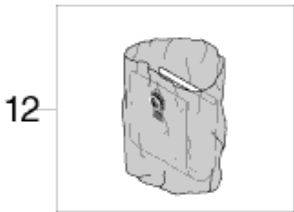
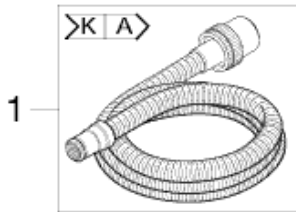
WAP/KEW acces. vacs, health & Safety

01-03-2015

ET-Liste-Nr.
SYSTEM32

25

System 32 / 27



System 32 and 27 (ATTIX)

WAP/KEW acces. vacs, health & Safety

01-03-2015

ET-Liste-Nr.
SYSTEM32

26

Pos	Artikelnr.	Me	Beschreibung	
1	14289	1	Saugschlauch Ø 27 mm x 3,5 m	KA
1	15325	1	Saugschlauch Ø 27 mm x 3,5 m	KA
1	30657	1	Saugschlauch Ø32X5000 antistatisch	KA
2	6094	1	Stiftstriegel Ø 36 mm	K
3	15038	1	Striegeleinsatz	K
4	6092	1	Kammstriegel Ø 36 mm	K
5		1	NOTE COMMENT	Not available buy 6092
6	6093	1	Bürstenstriegel Ø 36 mm	K
7		1	NOTE COMMENT	Not available buy 6093
8	14912	1	Filtersack turbo M2 VPE 5 Stk	
8	302000449	1	Filtersack -Set [5]	
8	302000527	1	Filtersack Set[5x] "ATTIX 5"	
8	302001138	1	Filtersack Set5 "ATTIX 560"	
8	302001484	1	Filtersack "ATTIX 7" Set-5Stück	
8	61603	1	Filtersack VPE5 "SQ8"	
9	302000728	1	Entsorgungssack Set5	
9	302000804	1	Entsorgungssack ALTO ATTIX 3 Set 5	
9	302001480	1	Entsorgungssack Set5 "ATTIX 7"	
9	302001629	1	Entsorgungssack Set25 "ATTIX 7 ED"	
10	107402626	1	Entnahmesack Set	
10	30082	1	Filterschutzbeutel Set [10x]	Attix 3, 5, 7
11	302000200	1	Stützsack für Filtersack SQ6	
11	40617	1	Stuetzsack fuer Filtersack	
12	302001040	1	Sicherheitsfiltersack Set-5	
12	302001141	1	Sicherheitsfiltersack Set[5x]	
12	302001143	1	Sicherheitsfiltersack Set-5 "ATTIX 56"	
12	302001486	1	Sicherheitsfiltersack Set[5x] "ATTIX 7"	
12	33209	1	Filtersack Si VPE 5St M2S-FA	
13	107400564	1	FILTER ELEMENT D275X187 H-CLASS	H-Class
13	302000490	1	Filterelement "M" ø185x140 Set	M-Class
13	302000658	1	Filterelement "H" ø211x140 Set	H-Class
13	302000751	1	Filterelement ø218 set 1	M-Class
13	302001134	1	Filterelement "H" ø275x185 Set-1	M-Class
14	26736	1	Filter Spezial- UP/PTFE	
14	34931	1	filterpatrone Absolut- 3003	
14	41164	1	Filterpatrone	
14	61605	1	Filterelement "M"	
15	11617	1	Filterpatrone Micro-	
15	302001095	1	Filterelement ø185x140 "HEPA"	
16	11641	1	Filterschoner (lang)	
16	11801	1	Filter	
17	15475	1	Sieb	
18	17070	1	Einlegetuchfilter Spezial M2	

System 32 and 27 (ATTIX)

WAP/KEW acces. vacs, health & Safety

01-03-2015

ET-Liste-Nr.
SYSTEM32

27

Pos	Artikelnr.	Me	Beschreibung
18	17582	1	EINLEGETUCHFIL.SUPER M2
18	302000525	1	Einlegetuchfilter SPEZIAL Attix5, 7
18	302000606	1	Einlegetuchfilter SPEZIAL Attix3, 30, 40, 50
18	61910	1	Einlegetuchfilter Spezial SQ8
18	8727	1	Einlegetuchfilter

System 36 (ATTIX)

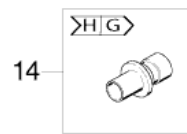
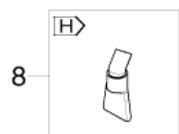
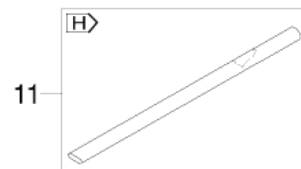
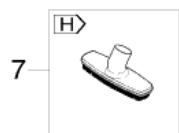
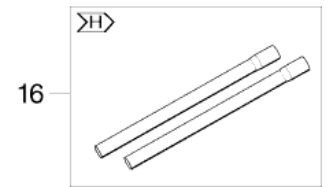
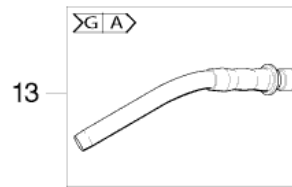
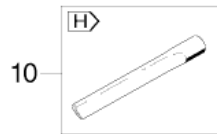
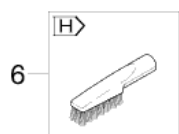
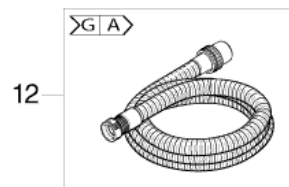
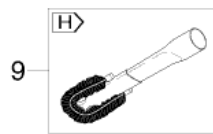
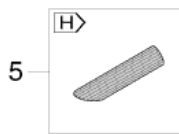
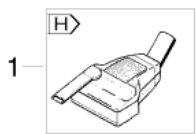
WAP/KEW acces. vacs, health & Safety

01-03-2015

ET-Liste-Nr.
SYSTEM36

28

System 36



System 36 (ATTIX)

WAP/KEW acces. vacs, health & Safety

01-03-2015

ET-Liste-Nr.
SYSTEM36

29

Pos	Artikelnr.	Me	Beschreibung	
1	41275	1	Turbinen-Handsaugbürste	H
2	5146	1	Saugpinsel	H
3	5145	1	Universaldüse	H
4	14295	1	Universaldüse	H
5	5067	1	Schrägrohrdüse	H
6	6086	1	Bürstendüse	H
7	40455	1	Ovalbuerste D36	H
8	40456	1	Flachduse	H
9	5144	1	Heizkörper-Bürstendüse Ø36x420	H
10	6084	1	Fugendüse, 300 mm	H
11	17836	1	Fugendüse lang Ø 36 mm	H
12	25537	1	Saugschlauch Ø36x4000 Kpl.	GA
12	46948	1	Saugschlauch Ø 36 mm x 3 m	GA
12	60781	1	Saugschlauch 36x3000 AS	GA
12	61779	1	Saugschlauch 36x4000 öl/temp.beständig	GA
12	63209	1	Saugschlauch 36x4000 AntiStatic	GA
13	302000528	1	Handrohr Gebogen Ø36 Stahl Verchromt	HG
13	46691	1	Handrohr Gebogen Ø36 VA	HG
14	29457	1	Kupplung	HG
15	47109	1	SAUGROHR DN36 TELESKOP VA	H
16	107400032	1	Verlängerungsrohr	H
16	107408074	1	SAUGROHR	H
16	302000529	1	Saugrohr Ø36x1100 Set St/cr	H

System 38 (ATTIX)

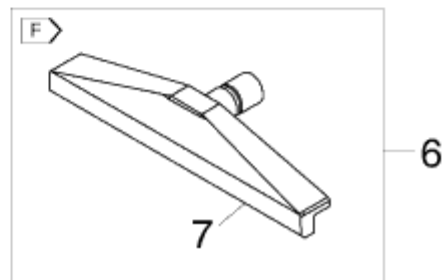
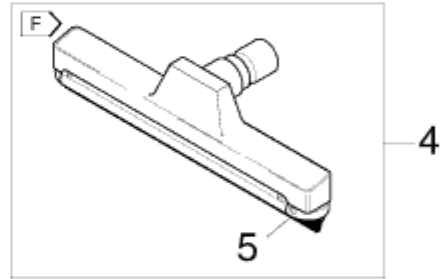
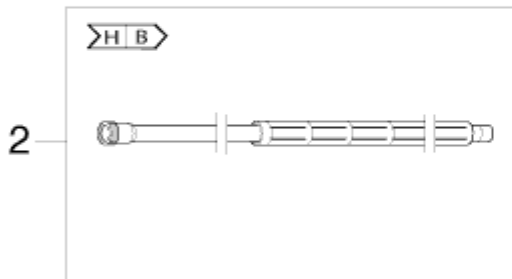
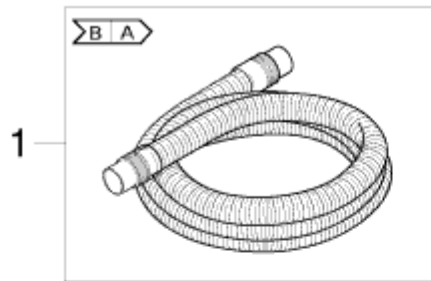
WAP/KEW acces. vacs, health & Safety

01-03-2015

ET-Liste-Nr.
SYSTEM38

30

System 38



System 38 (ATTIX)

WAP/KEW acces. vacs, health & Safety

01-03-2015

ET-Liste-Nr.
SYSTEM38

31

Pos	Artikelnr.	Me	Beschreibung	
1	15365	1	Saugschlauch Ø36x4000 mit Muffen	EA
1	6070	1	Saugschlauch Ø36X4000 hitzebeständig	EA
2	15339	1	Verlaengerungsrohr D38 2000mm	EA
2	15340	1	Verlaengerungsrohr ø38 x 2500	FE
3	7964	1	Rohrreinigungsduese 70-120	F
3	8054	1	ROHRREINIGUNGSDueSE 38 PVC	F
4	6079	1	Backofenduese Alu 38 mm	F
5	6080	1	Schabe-Einsatz	F
6	63380	1	Backofenduese 400 mm	F
7	64930	1	Schabeleiste 394x25x2 f.Backofendüse VP	F

System 50 (ATTIX)

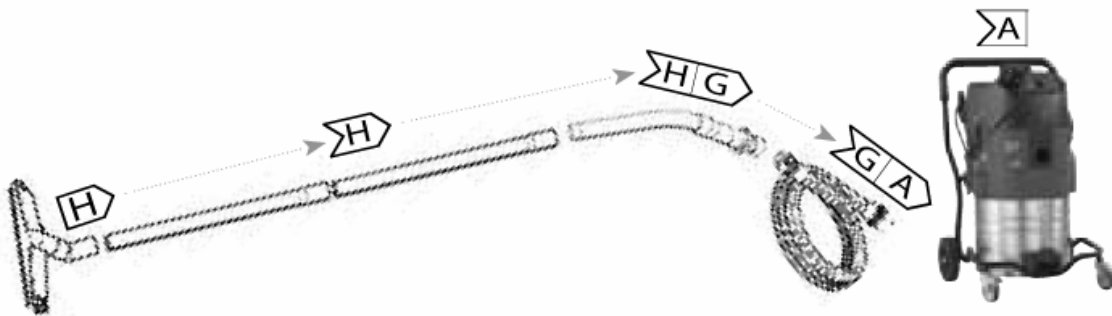
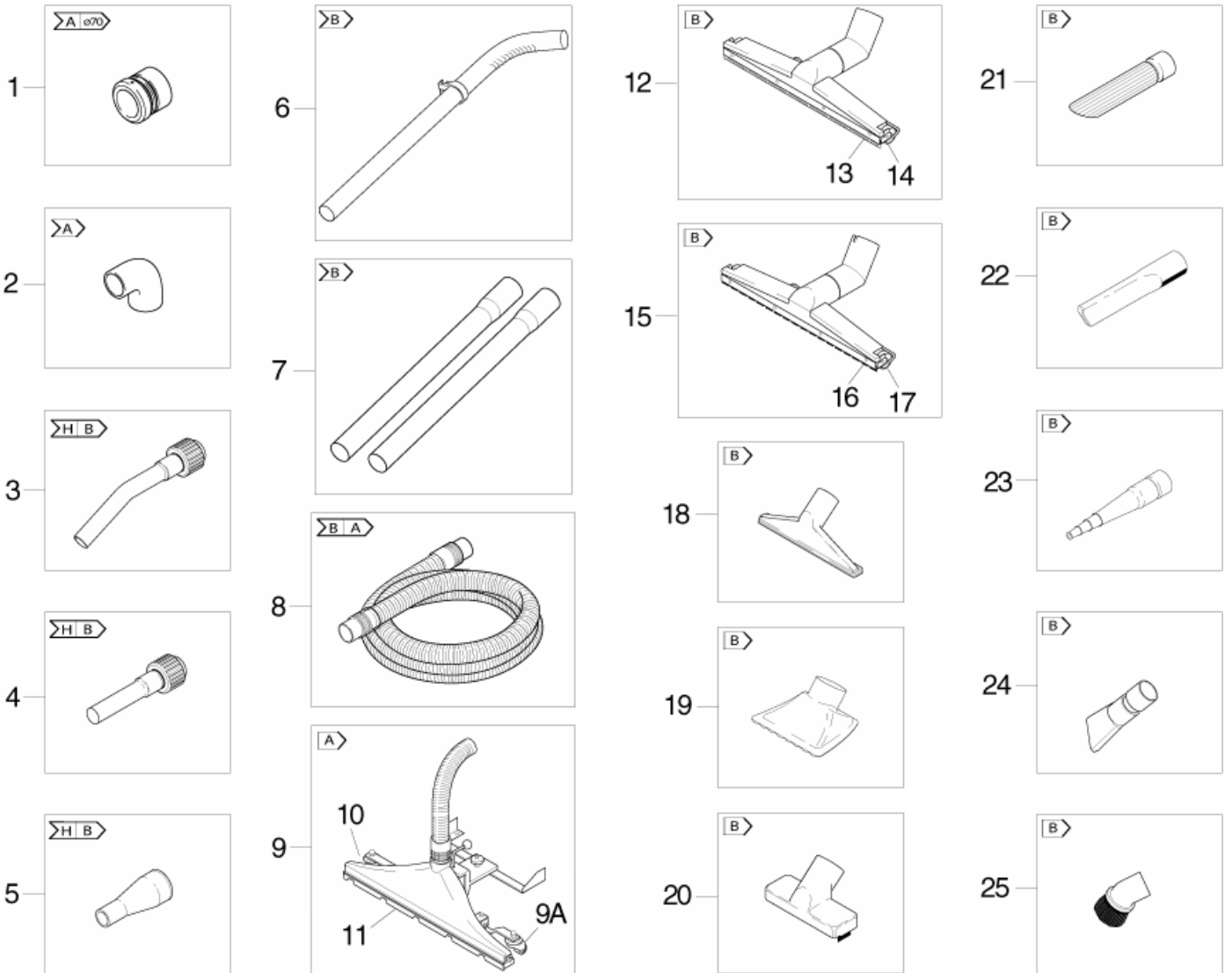
WAP/KEW acces. vacs, health & Safety

01-03-2015

ET-Liste-Nr.
SYSTEM50

32

System 50



The right fit

A → **>A**

The wrong fit

F ~~→~~ **>A**

System 50 (ATTIX)

WAP/KEW acces. vacs, health & Safety

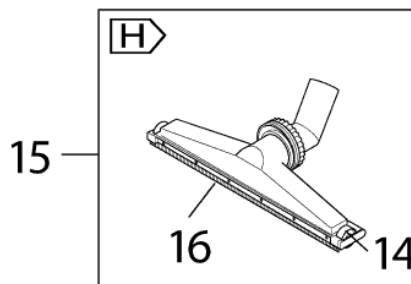
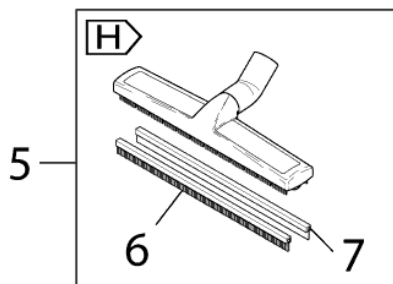
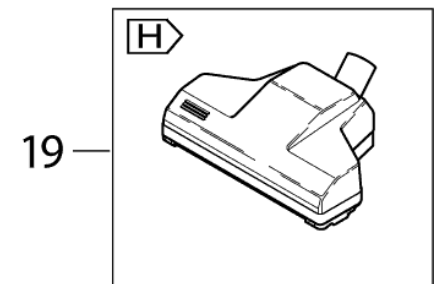
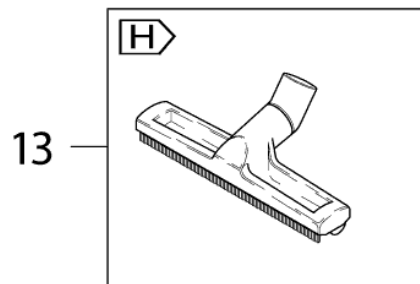
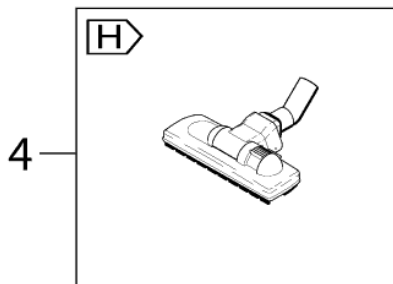
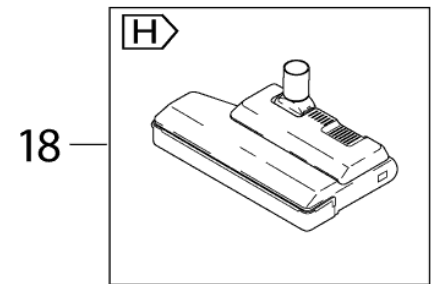
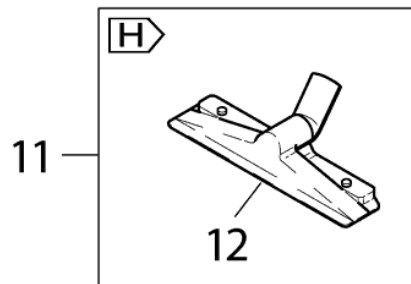
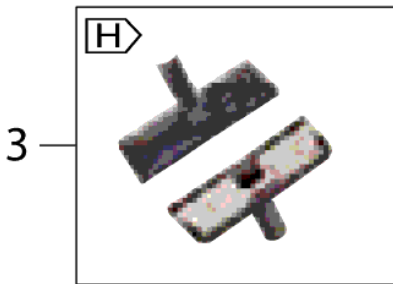
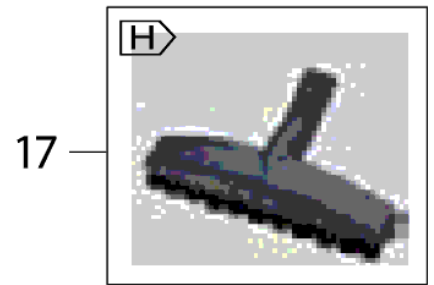
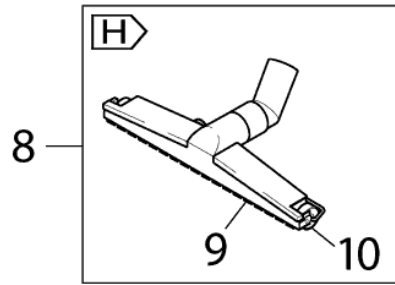
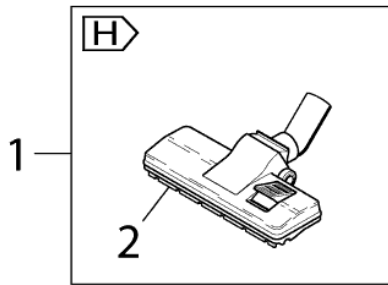
01-03-2015

ET-Liste-Nr.
SYSTEM50

33

Pos	Artikelnr.	Me	Beschreibung	
1	29716	1	Reduzierung Schlauchmuffe D70-50	A ĩ70
2	5089	1	WINKELANSCHLUSS PVC 50 MM	A
3	15341	1	Handrohr Ø36 gebogen	HB
4	15342	1	Handrohr gerade 50 / 36 Ø	HB
5	40452	1	Absaugadapter	HB
6	15335	1	VERLAEGERUNGSR.50 GEB.	B
7	5152	1	Verlängerungsrohr Ø 50 mm	B
8	11061	1	SAUG-SHL 50X 4000 HITZEB	BA
8	15013	1	Saugschlauch 50x 4000 Metall	BA
8	15182	1	Saugschlauch 50x 4000 Spaen	BA
8	15358	1	Saugschlauch Ø50x4000 Kpl.	BA
8	15815	1	SAUG-SHL 50X 4000 KPL.	BA
8	19930	1	Saugschlauch Ø 50 mm x 1,75 m	BA
8	6468	1	Saugschlauch 50x 4000 oelfest	BA
9	302001481	1	Fahrdüse B1 600mm ATTIX 7 Set-	A
10	7993	1	Buerstenleiste	
11	15814	1	Gummileiste Satz VPE	
12	15344	1	Industriebodenduese m. Gummilippen	B
13	15346	1	Gummileisten Set	B
13	302000188	1	Ersatz-Gummilippen ölbeständig	B
14	15345	1	Lauf rad	B
15	15343	1	Industrierollenduese DN50 500mm breit A	B
16	15347	1	Ersatz-Bürstenleisten (SET)	B
17	15345	1	Lauf rad	B
18	6077	1	Bodendüse Ø 50 mm	B
19	5153	1	Grobschmutzdüse Ø 50 mm	B
20	41100	1	GROBSCHM.DueSE ALU D=50MM	B
21	7868	1	Schrägrohrdüse Ø 50 mm	B
22	7102	1	Fugendüse Ø50x370	B
23	19936	1	Gummidüse Ø 50 mm	B
24	31244	1	Gummiduese Flach	B
25	40458	1	SAUGPINSEL	B
09A	6458	1	Rolle	wheel for 29194, 14753, 302001481

System 36



System 36 (2) (ATTIX)

WAP/KEW acces. vacs, health & Safety

01-03-2015

ET-Liste-Nr.
SYSTEM36Z

35

Pos	Artikelnr.	Me	Beschreibung	
1	302000477	1	Bodendüse 260xØ36	H
2	64127	1	Fadenaufnehmer	H
3	302000962	1	Bodendüse Ø36	H
4	302000259	1	Bodendüse Ø36	H
5	60356	1	Profi-Bodendüse Ø36	H
6	60358	1	Buerstenleiste Satz	H
7	60359	1	Gummileiste Satz	H
8	15348	1	Großraumbodendüse Ø 36 mm	H
8	15349	1	Großraumbodendüse Ø 36 mm	H
8	15350	1	Großraumbodendüse Ø 36 mm	H
9	15351	1	Bürsteneinsatz	H
9	15352	1	Gummilippeneinsatz	H
9	15353	1	Fusselleisteneinsatz	H
9	302000186	1	Ersatz-Gummileisten Satz 447/398 ölb.VP	H
10	15345	1	Lauf rad	H
11	5147	1	Bodendüse	H
12	6521	1	Bürsteneinsatz	H
13	7270	1	Nasssaugdüse	H
14	18794	1	Lauf rad	H
15	5149	1	Spezial-Bodendüse Ø 36 mm	H
16	6114	1	Gummilippeneinsatz	H
17	64195	1	Parkettduese DN36 300mm Rosshaarborsten	H
18	11664	1	Teppichsaugbuerste ø36 300mm 230V/50Hz	H
19	54118	1	Turbinen-Teppichsaugbürste	H

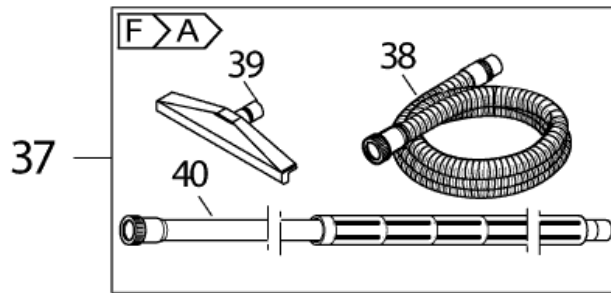
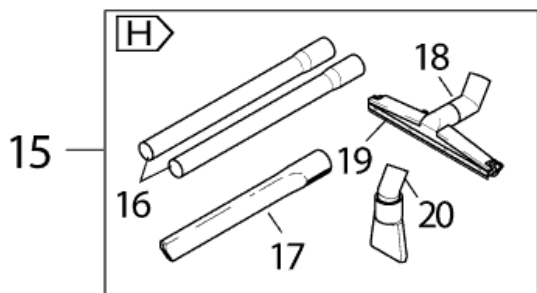
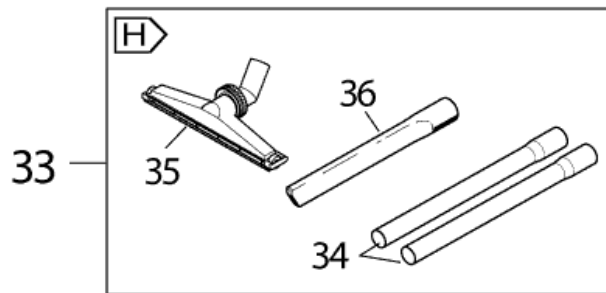
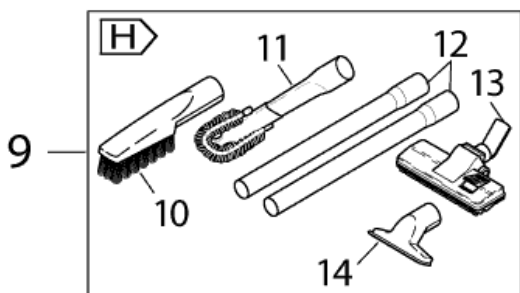
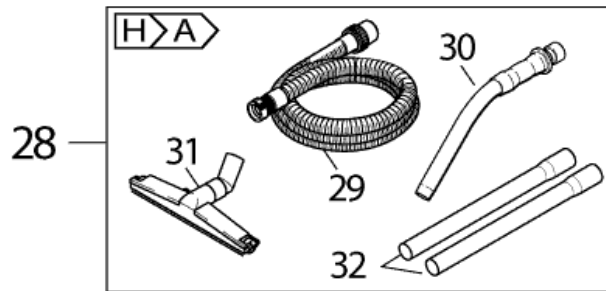
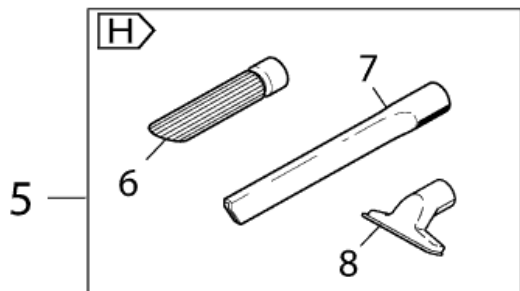
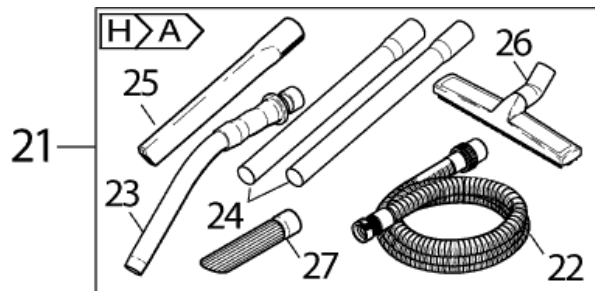
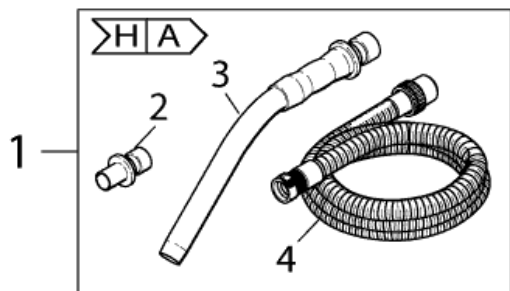
Zubehörset 1- (außer Type 22)

WAP/KEW acces. vacs, health & Safety

01-03-2015

ET-Liste-Nr.
SYSTEMSET

36



Zubehörset 1- (außer Type 22)

WAP/KEW acces. vacs, health & Safety

01-03-2015

ET-Liste-Nr.
SYSTEMSE I

37

Pos	Artikelnr.	Me	Beschreibung	
1	63210	1	Schlauch-Set ø36	HA
2	29457	1	Kupplung	HA
3	46691	1	Handrohr Gebogen Ø36 VA	HA
4	25537	1	Saugschlauch Ø36x4000 Kpl.	HA
5	63211	1	Fahrzeug-Set ø36	H
6	5067	1	Schrägrohrdüse	H
7	6084	1	Fugendüse, 300 mm	H
8	14295	1	Universaldüse	H
9	63212	1	Haus- & Buero-Set ø36	H
10	6086	1	Bürstendüse	H
11	5144	1	Heizkörper-Bürstendüse Ø36x420	H
13	8046	1	Kombidüse	H
14	14295	1	Universaldüse	H
15	63213	1	Handwerker & Industrie-Saugset	H
16	107408074	1	SAUGROHR	H
17	6084	1	Fugendüse, 300 mm	H
18	15348	1	Großraumbodendüse Ø 36 mm	H
19	15352	1	Gummilippeneinsatz	H
20	40456	1	Flachduese	H
21	302000927	1	Saug-set ø36 "Workshop"	HA
22	25537	1	Saugschlauch Ø36x4000 Kpl.	HA
23	46691	1	Handrohr Gebogen Ø36 VA	HA
24	107408074	1	SAUGROHR	HA
25	6084	1	Fugendüse, 300 mm	HA
26	60356	1	Profi-Bodendüse Ø36	HA
27	5067	1	Schrägrohrdüse	HA
28	63214	1	Industrie-/Boden-Set ø36	HA
29	61779	1	Saugschlauch 36x4000 öl/temp.beständig	HA
30	46691	1	Handrohr Gebogen Ø36 VA	HA
31	15349	1	Großraumbodendüse Ø 36 mm	HA
32	107408074	1	SAUGROHR	HA
33	7727	1	Wassersaug-Set	H
34	107408074	1	SAUGROHR	H
35	5149	1	Spezial-Bodendüse Ø 36 mm	H
36	6084	1	Fugendüse, 300 mm	H
37	14341	1	Backofen-Reinigungs-Set + Verl.Rohr	FA
38	6070	1	Saugschlauch Ø36X4000 hitzebeständig	FA
39	63380	1	Backofenduese 400 mm	FA
40	15340	1	Verlängerungsrohr ø38 x 2500	FA

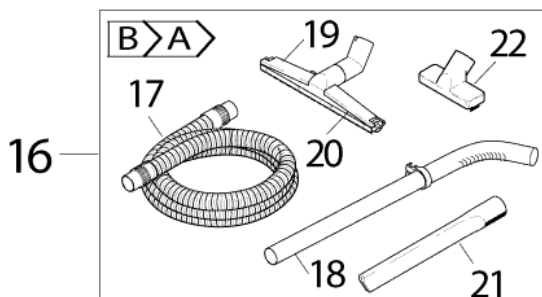
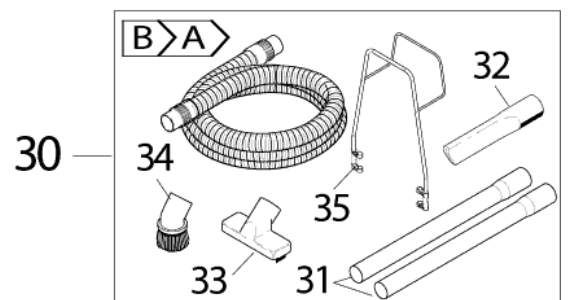
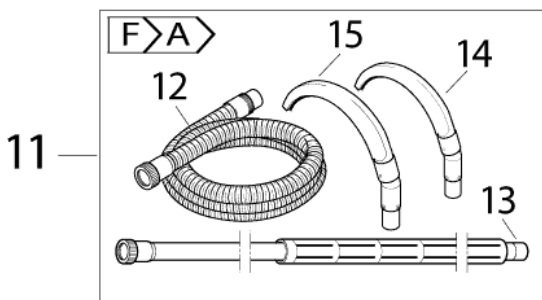
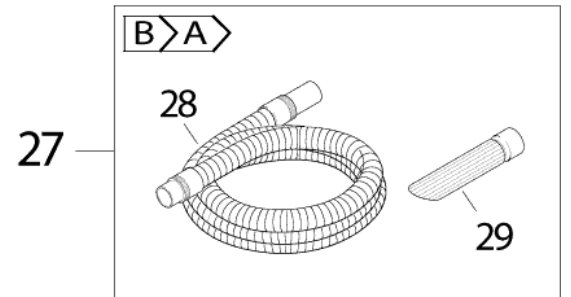
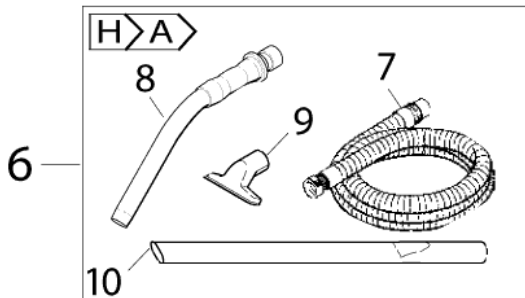
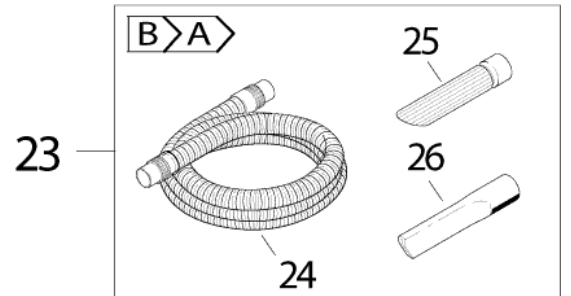
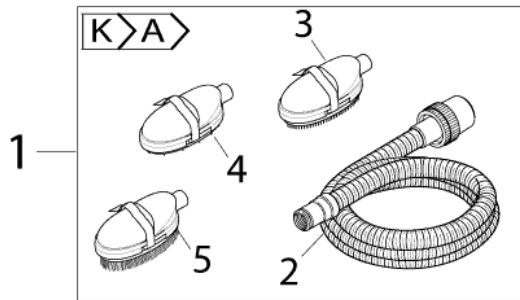
Zubehörset 2 (außer Typ 22)

WAP/KEW acces. vacs, health & Safety

01-03-2015

ET-Liste-Nr.
SYSTEMSET2

38



Zubehörset 2 (außer Typ 22)

WAP/KEW acces. vacs, health & Safety

01-03-2015

ET-Liste-Nr.
SYSTEMSE 12

39

Pos	Artikelnr.	Me	Beschreibung	
1	6095	1	Saug-Set ø36 "Tierpflege" Striegel	KA
2	14289	1	Saugschlauch Ø 27 mm x 3,5 m	KA
3	6094	1	Stiftstriegel Ø 36 mm	KA
4	6092	1	Kammstriegel Ø 36 mm	KA
5	6093	1	Bürstenstriegel Ø 36 mm	KA
6	60430	1	Heizkessel-Reinigungs-Set	HA
7	46948	1	Saugschlauch Ø 36 mm x 3 m	HA
8	46691	1	Handrohr Gebogen Ø36 VA	HA
9	5145	1	Universaldüse	HA
10	17836	1	Fugendüse lang Ø 36 mm	HA
11	63215	1	Rohrabstaub-Set ø38	FA
12	15365	1	Saugschlauch Ø36x4000 mit Muffen	FA
13	15340	1	Verlängerungsrohr ø38 x 2500	FA
14	7964	1	Rohrreinigungsdüse 70-120	FA
15	8054	1	ROHRREINIGUNGSDüseSE 38 PVC	FA
16	63216	1	Saug-Set ø50 "Industrie"	BA
17	15358	1	Saugschlauch Ø50x4000 Kpl.	BA
18	15335	1	VERLÄNGERUNGSR.50 GEB.	BA
19	15343	1	Industrierollendüse DN50 500mm breit A	BA
20	15346	1	Gummileisten Set	BA
21	7102	1	Fugendüse Ø50x370	BA
22	41100	1	GROBSCHM.DüseSE ALU D=50MM	BA
23	6085	1	Saug-Set ø50 "Standard"	BA
24	15358	1	Saugschlauch Ø50x4000 Kpl.	BA
25	7868	1	Schrägrohrdüse Ø 50 mm	BA
26	7102	1	Fugendüse Ø50x370	BA
27	61681	1	Saug-Set ø50 Spaenesaugen	BA
28	15182	1	Saugschlauch 50x 4000 Spaen	BA
29	7868	1	Schrägrohrdüse Ø 50 mm	BA
30	63217	1	Omnibus-Set ø50	BA
31	5152	1	Verlängerungsrohr Ø 50 mm	BA
32	7102	1	Fugendüse Ø50x370	BA
33	41100	1	GROBSCHM.DüseSE ALU D=50MM	BA
34	40458	1	SAUGPINSEL	BA
35	65081	1	Schlauchhalter-Set f. SQ 6 / SQ 8	BA

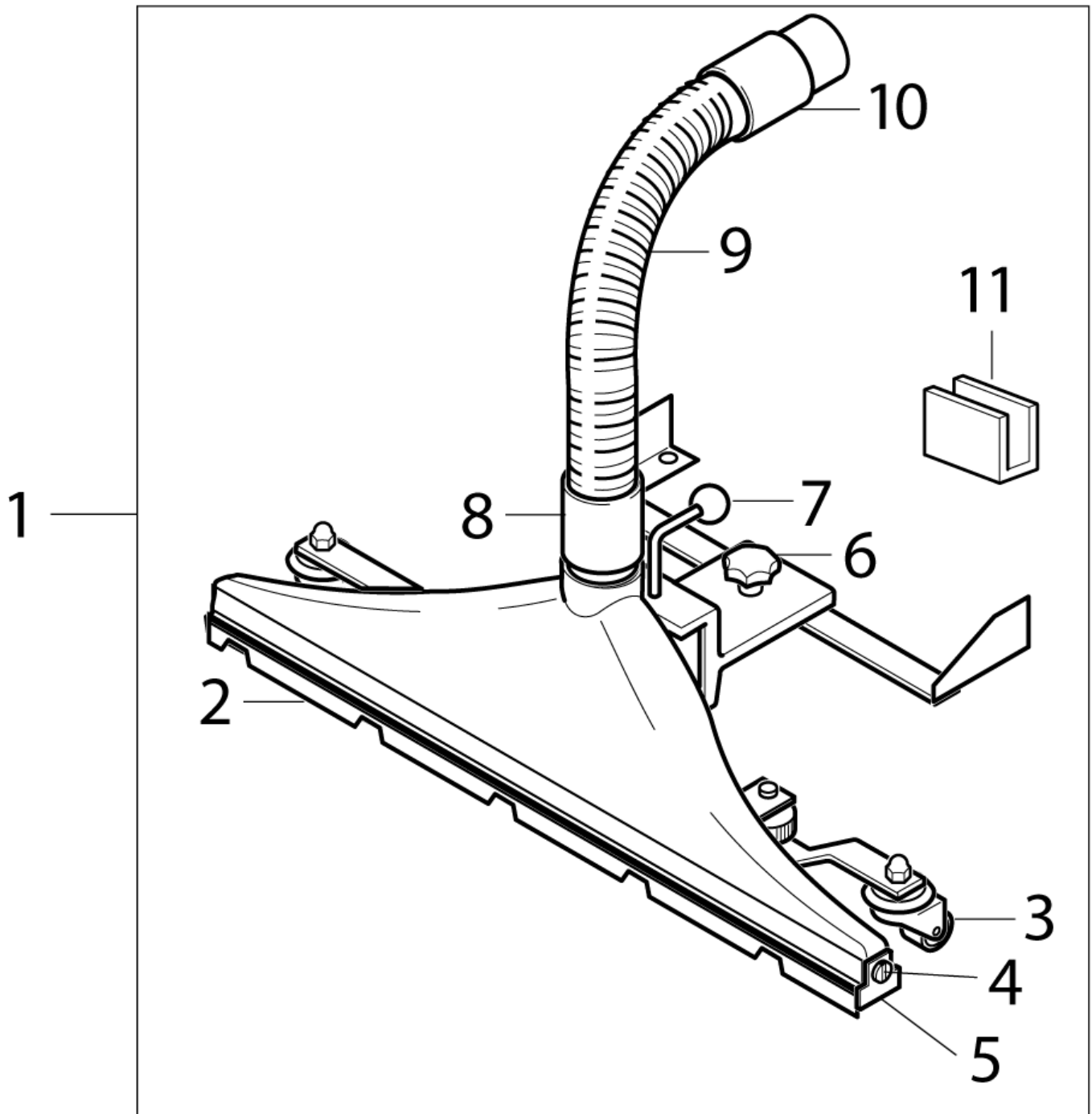
Large fixed floor nozzle

WAP/KEW acces. vacs, health & Safety

01-03-2015

ET-Liste-Nr.
ACCESWD16

40



Large fixed floor nozzle

WAP/KEW acces. vacs, health & Safety

01-03-2015

ET-Liste-Nr.
ACCESWD16

41

Pos	Artikelnr.	Me	Beschreibung	
1	302001481	1	Fahrdüse B1 600mm ATTIX 7	Set-
2	15814	1	Gummileiste Satz	VPE
3	6458	2	Rolle	
4	6445	2	Schraube M6x5	
5	6444	2	SEALING PLATE	
6	6452	1	Sterngriff M8	
7	6455	1	Kugelknopf	
8	42956	1	Muffe Schlauch- D50 B1	
9	7599	1	Saugschlauch D50 Mewa	AS
10	42955	1	Muffe Schlauch- D50 B1	for 29194 and 302001481
11	302003457	1	Anbaukonsole PP	

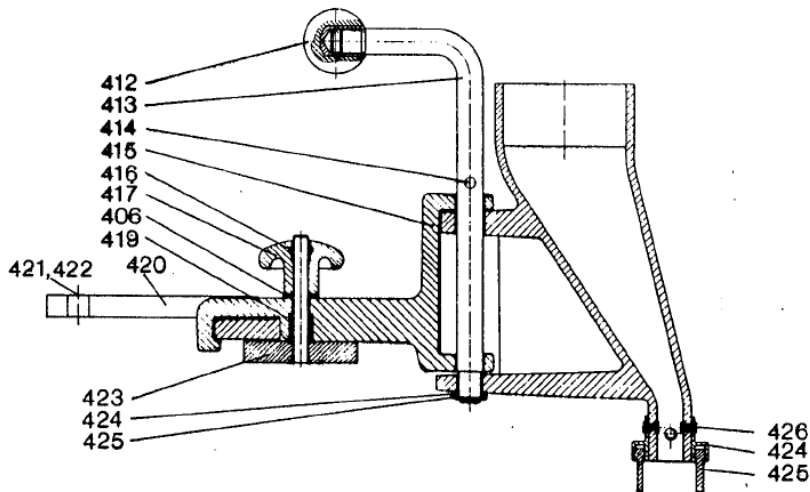
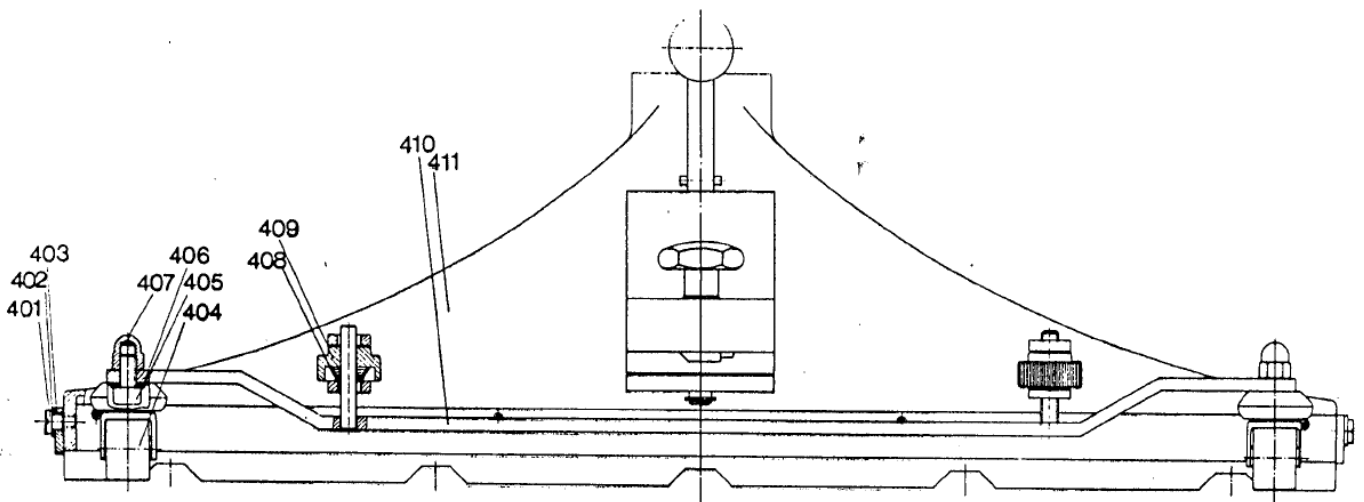
Large fixed floor nozzle 2

WAP/KEW acces. vacs, health & Safety

01-03-2015

ET-Liste-Nr.
TURBOD12

42



12900884

Large fixed floor nozzle 2

WAP/KEW acces. vacs, health & Safety

01-03-2015

ET-Liste-Nr.
URBOD12

43

Pos	Artikelnr.	Me	Beschreibung	
400		1	NOTE COMMENT	Use 302001481
401	6445	1	Schraube M6x5	
403	6444	1	SEALING PLATE	
404	6458	1	Rolle	
406	2762	1	Scheibe DIN125-A8,4	
408	3700	1	PRESSURE SPRING 1.0 X10.3	
409	6456	1	Mutter Rdl- M8	
412	6455	1	Kugelknopf	
413	6426	1	Schubstange	
414	8860	1	DOWEL M6X20 ISO 2338 ST/ZN	
415	6424	1	Halterung	
416	6716	1	RDR A 7x2-NBR70	
417	6452	1	Sterngriff M8	
419	6459	1	Druckfeder	
420	14924	1	CLAMPING FIXTURE	
421	2753	1	Sechskantschraube DIN933-M8x20-8.8	
422	2798	1	Federring DIN7980-8	
424	2767	1	Scheibe 10,5x2,0 ISO 7090 zn	
425	8782	1	Sicherungsscheibe Ø8	
426	6714	1	Blindniet 3,2x9,5	
427	10197	1	RETAINING RAIL	
429	7599	1	Saugschlauch D50 Mewa AS	

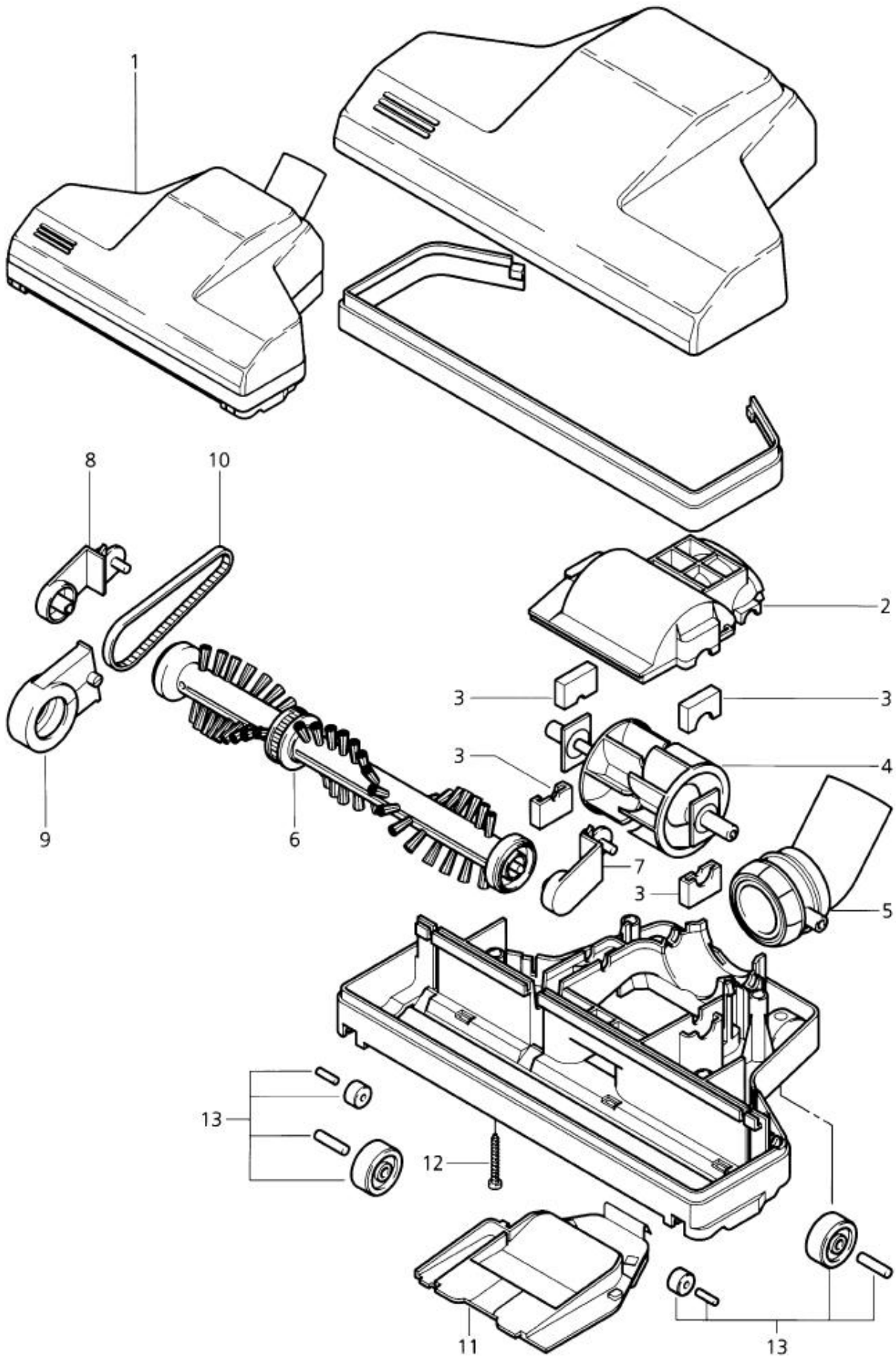
Turbo Nozzle

WAP/KEW acces. vacs, health & Safety

01-03-2015

ET-Liste-Nr.
ACCESWD18

44



Turbo Nozzle

WAP/KEW acces. vacs, health & Safety

01-03-2015

ET-Liste-Nr.
ACCESWD18

45

Pos	Artikelnr.	Me	Beschreibung
1	54118	1	Turbinen-Teppichsaugbürste
3	54120	1	BEARING 20X14
4	54123	1	Turbine
5	54121	1	PIVOT JOINT
6	54126	1	BRUSH ROLLER
10	54118	1	Turbinen-Teppichsaugbürste
11	54122	1	COVER BOTTOM -TSB- ABS
12	11255	1	Schraube P3,5x30
13	54148	1	WHEEL KIT

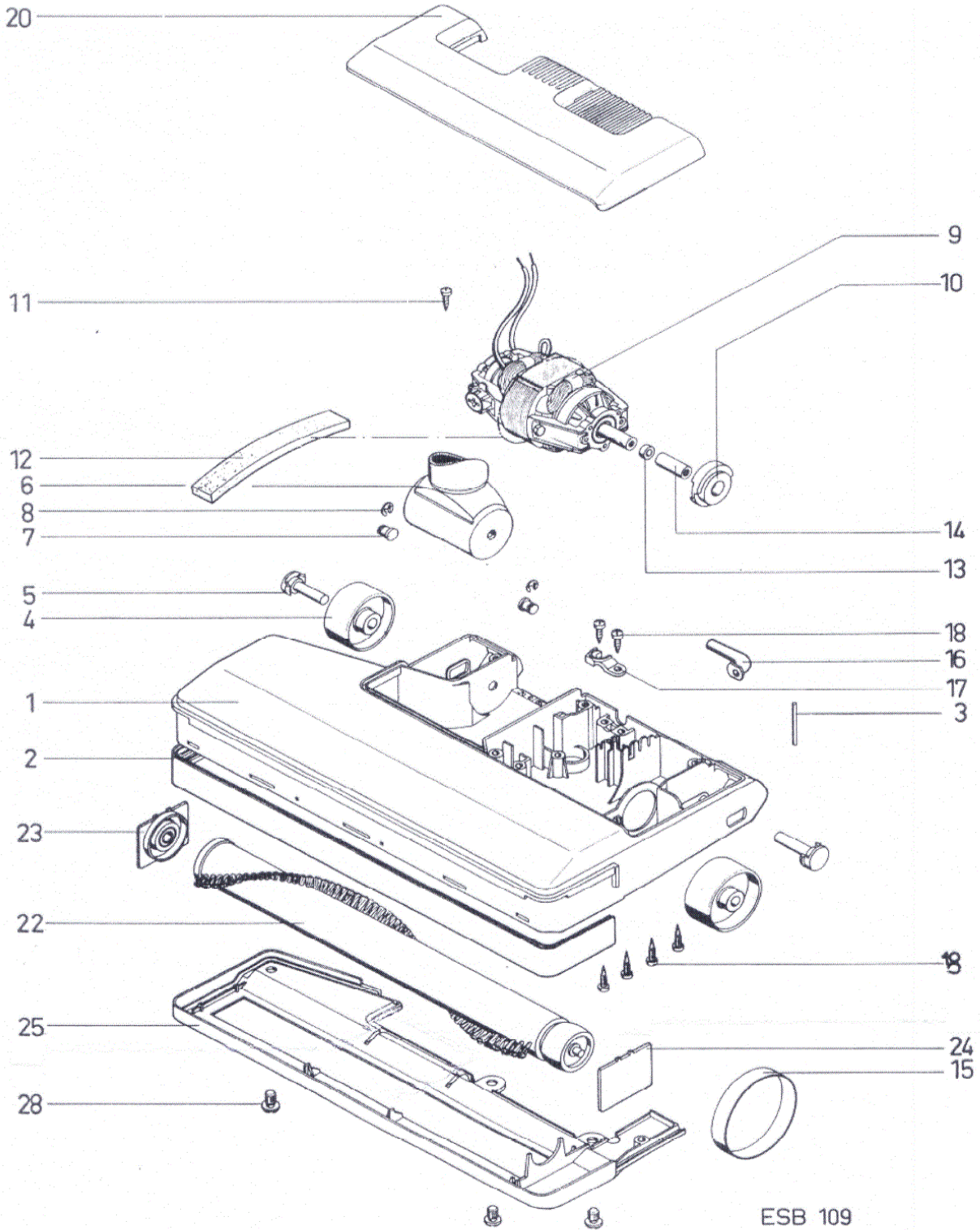
Electrical Turbo Nozzle

WAP/KEW acces. vacs, health & Safety

01-03-2015

ET-Liste-Nr.
ACCESWD20

46



Electrical Turbo Nozzle

WAP/KEW acces. vacs, health & Safety

01-03-2015

ET-Liste-Nr.
ACCESWD20

47

Pos	Artikelnr.	Me	Beschreibung	
0	11664	1	Teppichsaugbuerste ø36 300mm 230V/50Hz	Complete
1		1	NOTE COMMENT	Not available as seperate item
2		1	NOTE COMMENT	Not available as seperate item
3		1	NOTE COMMENT	Not available as seperate item
4	41356	1	WHEEL FOR MOT. BRUSH	
5	40709	1	FIXING TUBE	
6	41369	1	SUCTION PIECE FOR MOT.BRU	
7	41370	1	BEARING BOLT	
8	14402	1	Sicherungsscheibe DIN6799-6	
9	41357	1	ELECTRIC MOTOR ASSEMBLY	
10	41358	1	Halter	
13		1	NOTE COMMENT	Not available as seperate item
14	40289	1	Keramikhülse	
15	41360	1	Riemen	
16		1	NOTE COMMENT	Not available as seperate item
17		1	NOTE COMMENT	Not available as seperate item
18		1	NOTE COMMENT	Not available as seperate item
20	41363	1	COVER	
22	41364	1	Bürstenwalze	
23	33406	1	BEARING PLATE RIGHT	
24	33405	1	BEARING PLATE LEFT	