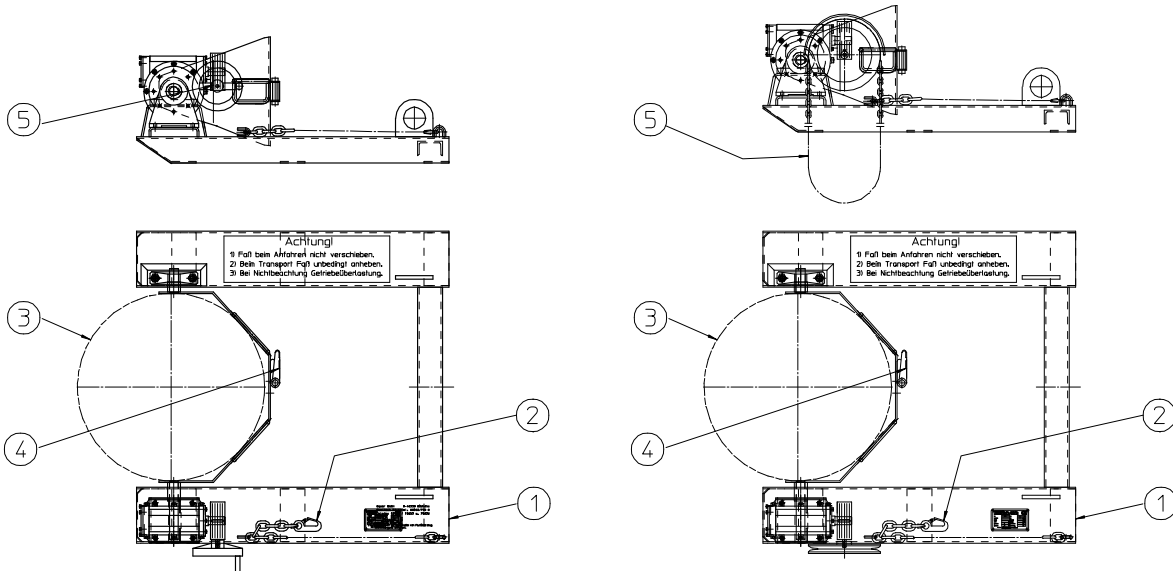


Operating Instructions BAUER – Drum Tipper

Type FLEX - HK

Type FLEX - K



1. Drive the forks of the fork-lift truck into the sleeves (pos. 1) of the Drum Tipper
2. Secure the safety chain (pos. 2) on the Drum Tipper to the fork-lift truck
3. Drive the Drum Tipper towards the drum
4. Encompass the drum using the belt (pos. 3) and fix it in place with the ratchet (pos. 4)
5. Drive the fork-lift truck to the place of use and raise the drum to the height required
6. Turn the crank handle for type FLEX HK and the loop chain for type FLEX-K (pos. 5 respectively) in order to empty the drum and return it to the original position.
7. Lower the Drum Tipper back to ground level
8. Release the drum using the ratchet (pos. 4) and then the belt (pos. 3)

Warning: Do not push the drum across the floor as this will damage the gear box!
Please remember to check the load capacity of your vehicle in connection with this unit and observe this limit!

Ü/fr 08.06.04
Orig.04.06.2004 schl.