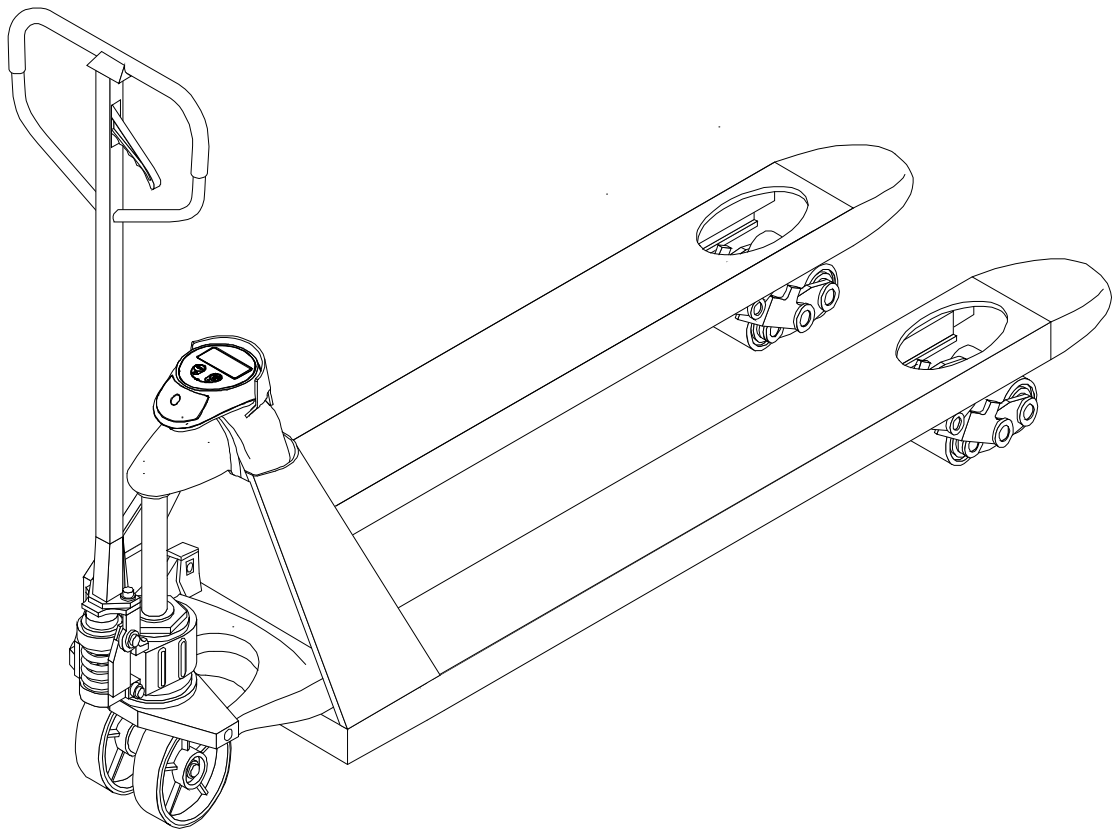


INSTALLATION MANUAL

RAVAS-1



Note: Operator MUST read and understand these operating instructions before using this Hand Pallet truck with weight indication.

Table of contents

	page
1. Introduction	3
2. Warnings & safety measures	3
3. Functionality keys	3
4. Exploded-view & part list	4
5. Head mounting holes pattern	5
6. Mounting indicator	6
7. Placing the two machine labels	11
8. Service menu	12
8.1 Service menu set-up	12
8.2 Parameter settings menu	13
8.3 Height sensor calibration	15
8.4 Weight calibration	17
9. Parameterlist	20
10. Wiring diagram	21

We would like to inform you about the fact that this RAVAS product is 100 % recyclable on the basis that the parts are processed and disposed off in the right manner.
More information can be found on our website www.ravas.com.



Rev.20150617
Printing/typographical errors and model changes reserved

1. Introduction

Thank you for using this hand pallet truck with weight indication. Your hand pallet truck with weight indication was designed to give you a reliable and easy to use product. For your safety and correct operation, please carefully read this instruction before using it.

NOTE: All of the information reported herein is based on data available at the moment of printing. We reserve the right to modify our own products at any moment without notice and incurring in any sanction. So, it is suggested to always verify possible updates.



2. Warnings & Safety measures

When using the hand pallet truck with weight indication please observe carefully the instructions and guidelines contained in this manual. Always perform each step in sequence.

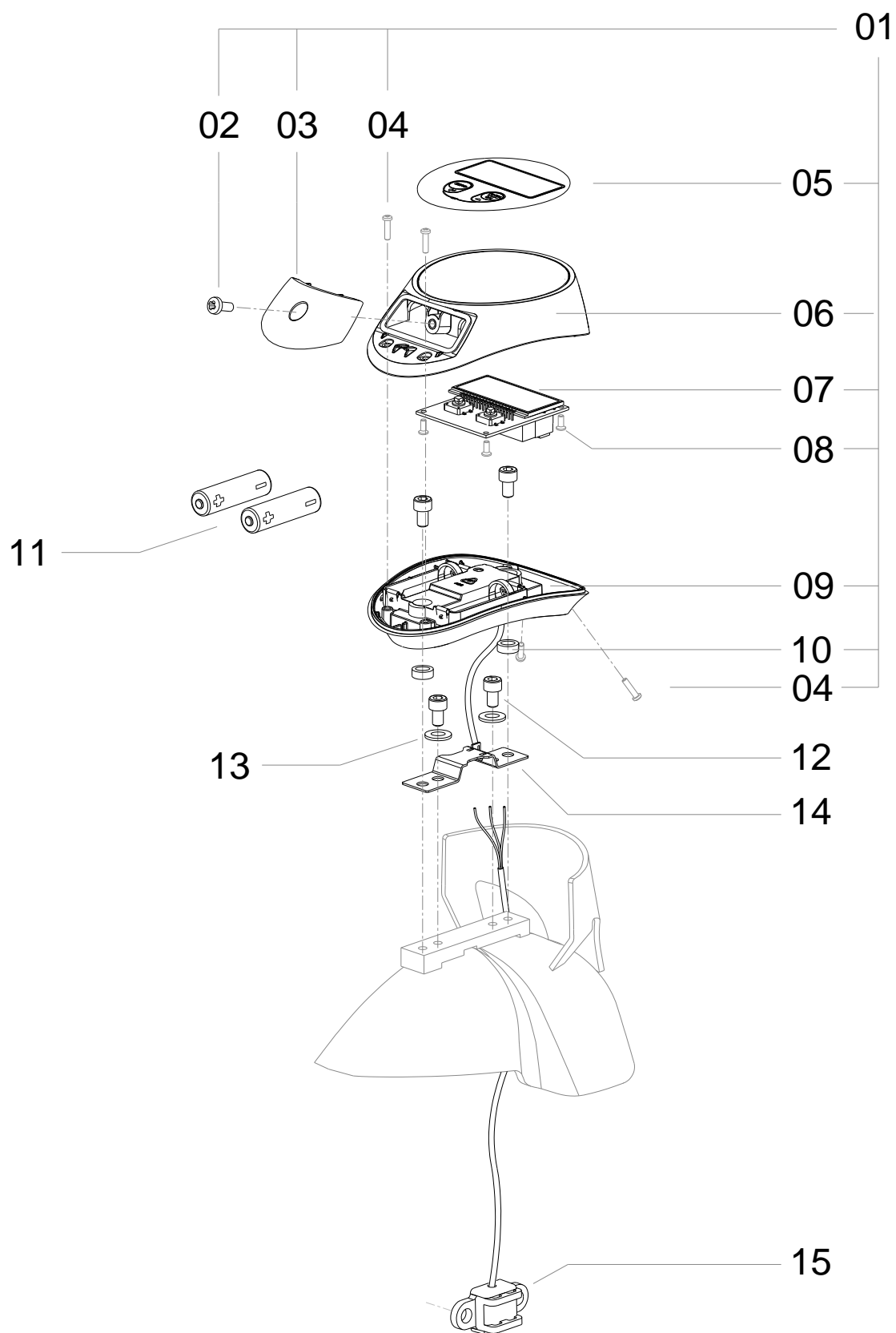


- All safety regulations that apply to the pallet truck remain valid and unchanged.
- Any modifications done to the system must be approved in writing from the supplier, prior to any work being completed.
- Do not operate this unit unless you have been fully trained of its capabilities.
- Check the accuracy of the scale on a regular basis to prevent faulty readings.
- Only trained and authorized personnel are allowed to service the scale.

3. Functionality keys

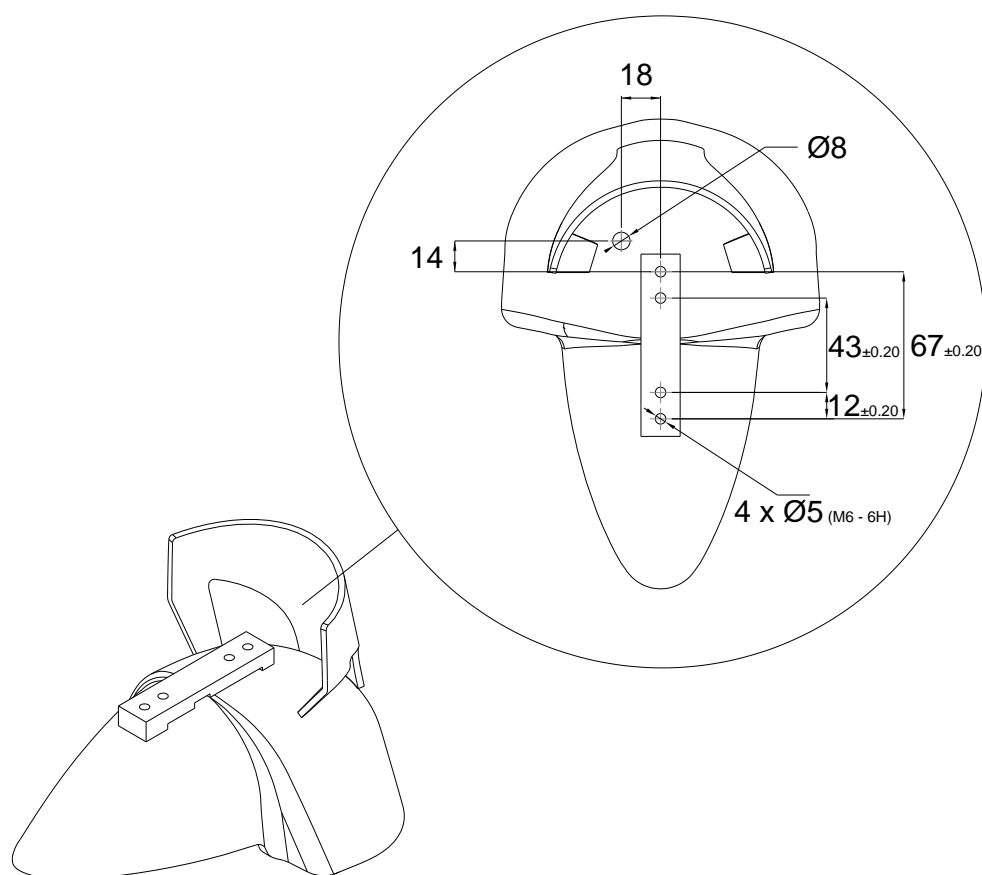
KEY FUNCTIONS		
<u>WEIGHING MODE</u> 1. SHORT KEY PRESS 2. LONG KEY PRESS (> 3 sec) 3. VERY LONG KEY PRESS (> 10 sec) 4. 30 SEC KEY PRESS (> 30 sec)	Zero correction Zero calibration	Switch ON Totalize weight Show totalization memory <ul style="list-style-type: none">• during cycle, reset memory by pressing zero Go into <i>Service menu</i> (keep key pressed during switching on)
<u>ENTRY MODE</u> 1. SHORT KEY PRESS 2. LONG KEY PRESS (> 3 sec)	Go into entry menu Shift cursor to left Confirm (activate calibration)	Scroll upwards though menu to increase the value of the shown digit

4. Exploded view & Part list

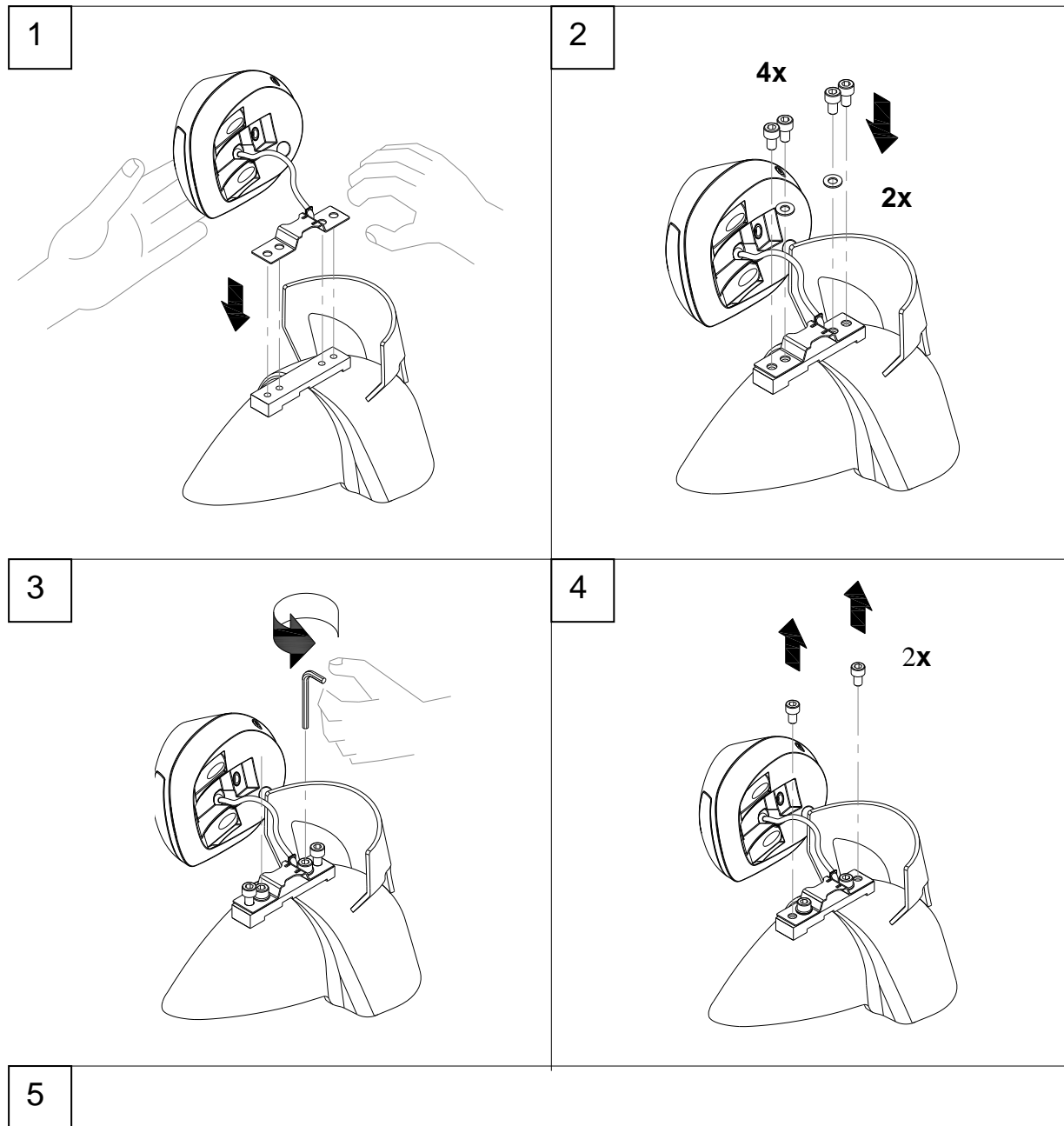


Part nr.	Description	Amount
1	Indicator Assembled	1
2	Cross recessed raised cheesehead screw M4x10	1
3	Indicator battery cover with sealing gasket	1
4	Self tapping plastic screw k3.0*12	4
5	Touch panel	1
6	Indicator top housing	1
7	LCD display	1
8	Self tapping plastic screw k3.0*6	4
9	Indicator bottom housing	1
10	Spacer ring M6	2
11	AA battery 1.2-1.5VDC	2
12	Hexagon socket head screw M6x10 low	4
13	Washer M6	2
14	Weight-sensor	1
15	Height-sensor	1

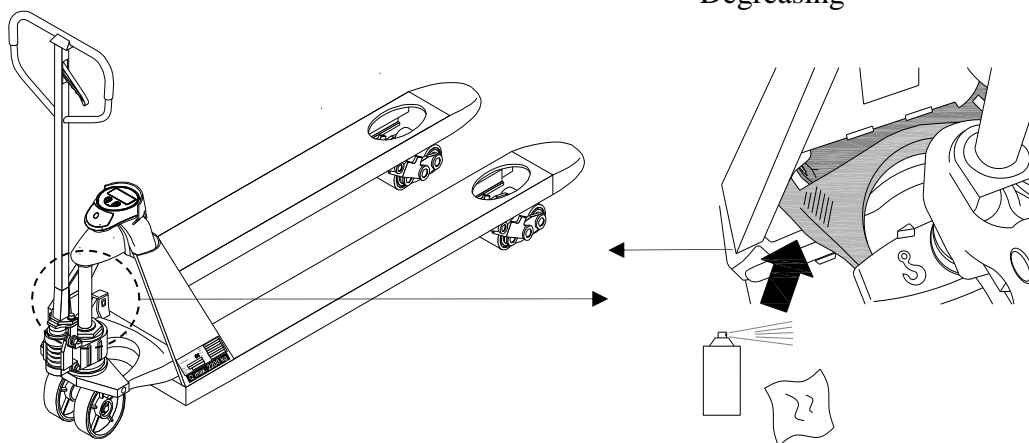
5. Head mounting holes pattern



6. Mounting indicator



Degreasing



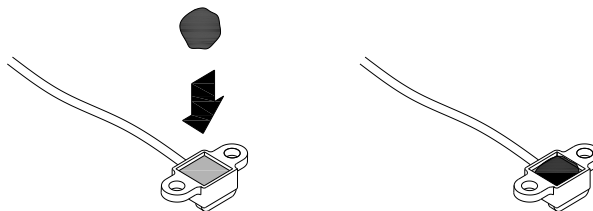
6

Butyle gum



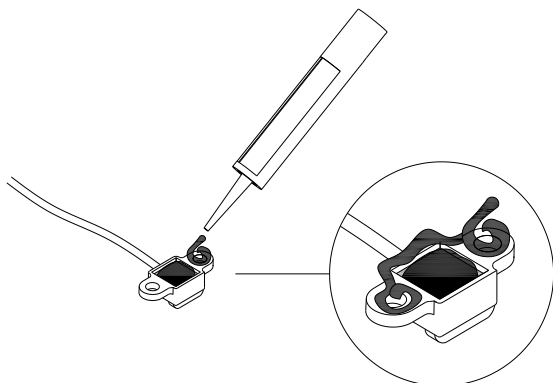
7

Putting butyle gum in the middle.

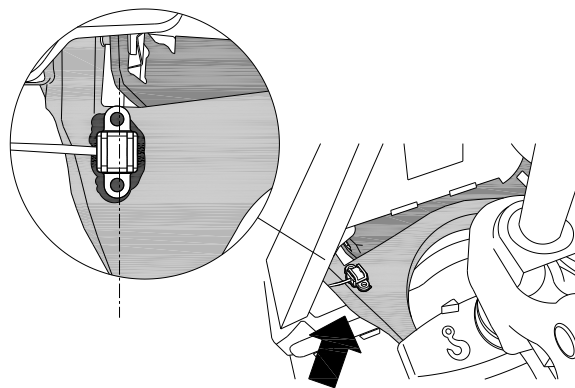


8

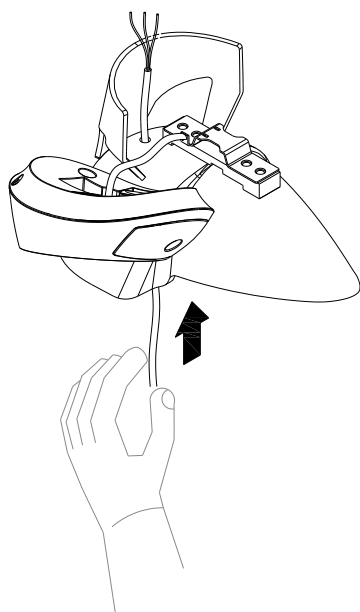
Glue the sensor



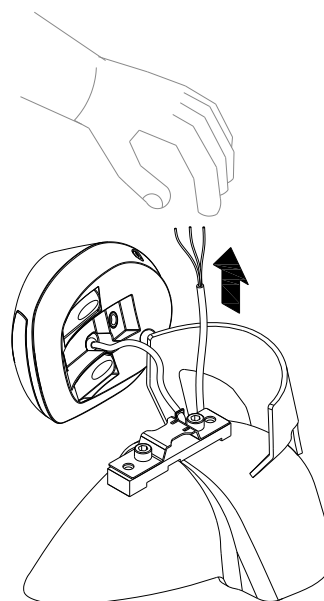
9



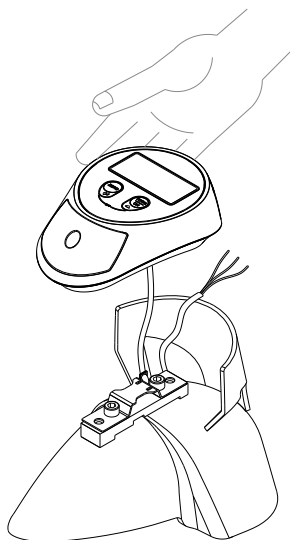
10



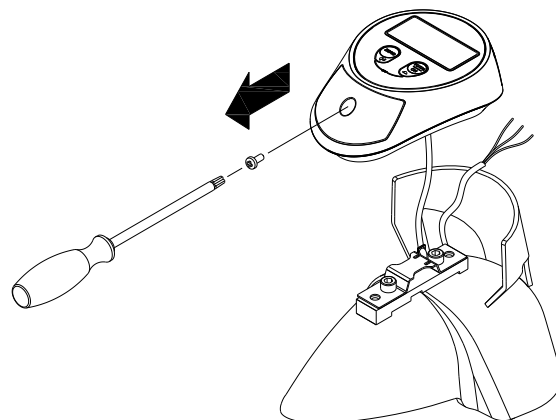
11



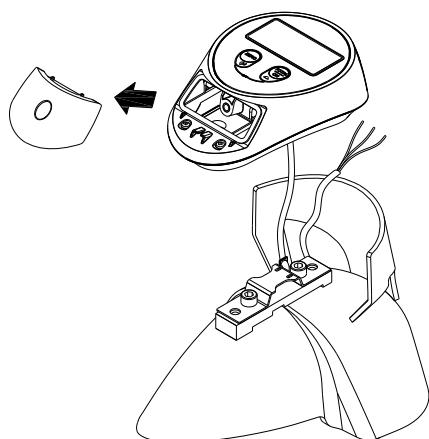
12



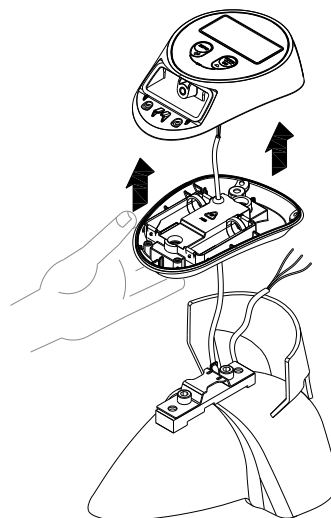
13



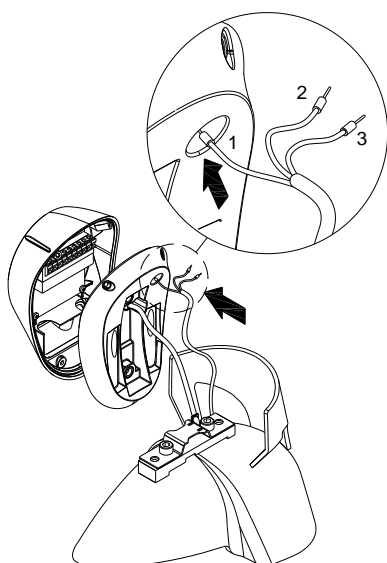
14



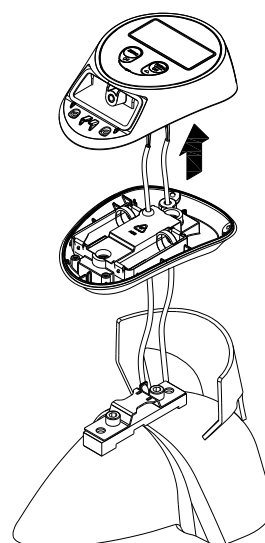
15



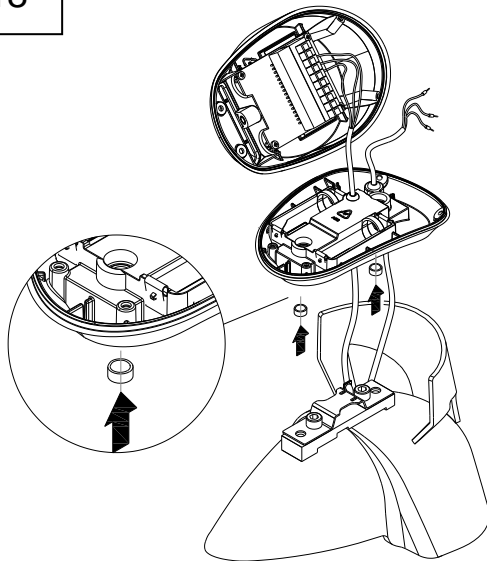
16



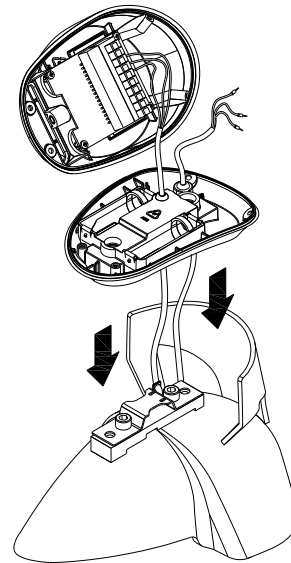
17



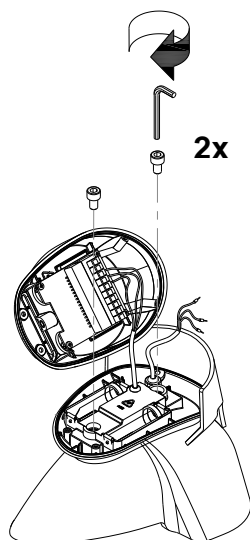
18



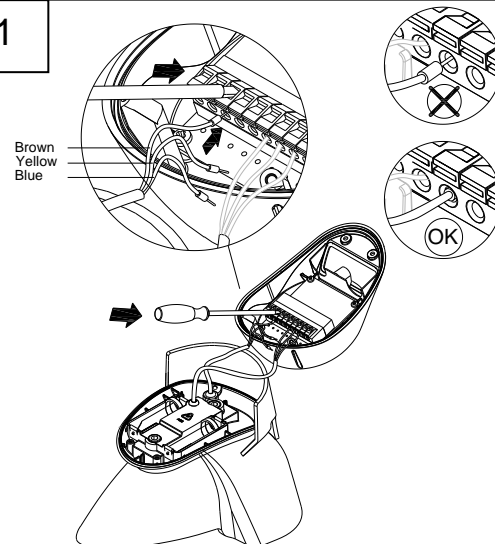
19



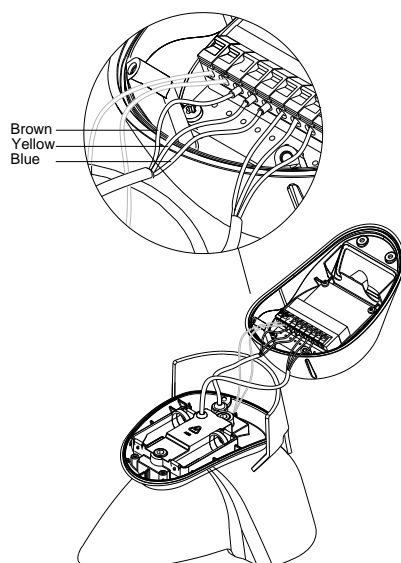
20



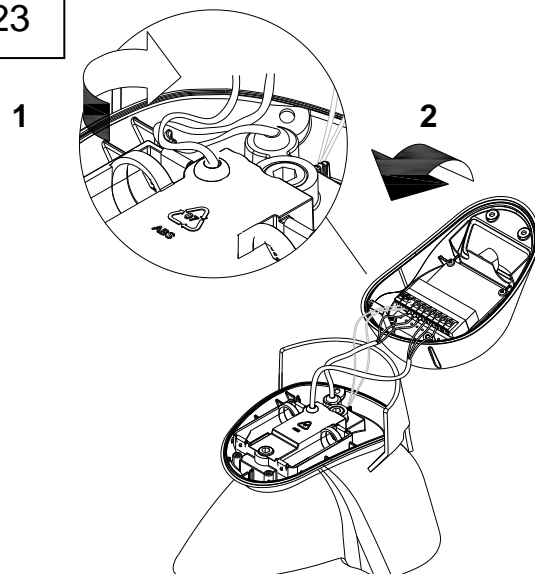
21



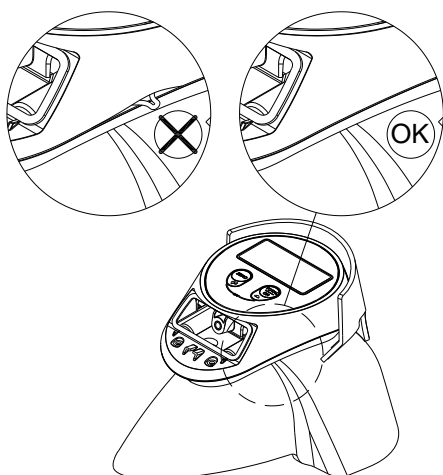
22



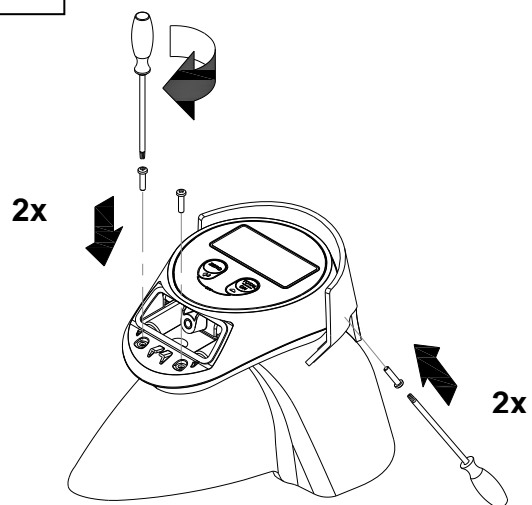
23



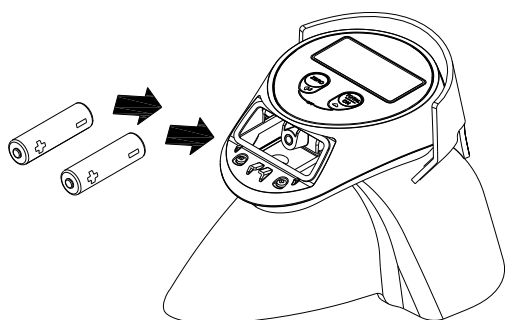
24



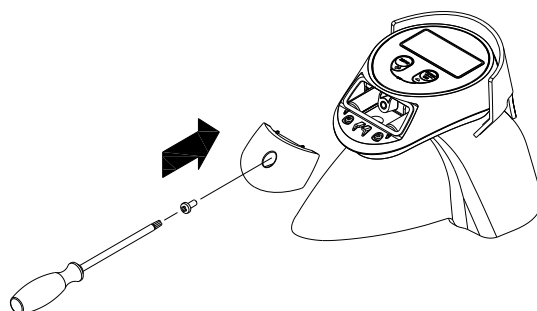
25



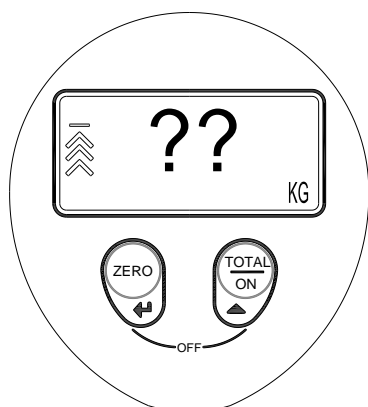
26



27

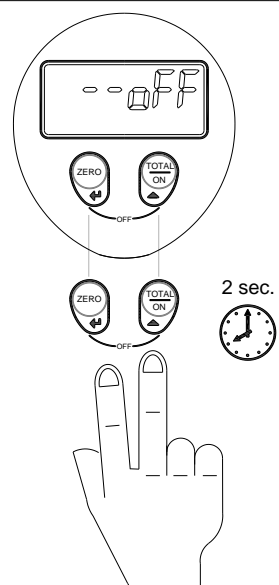


28

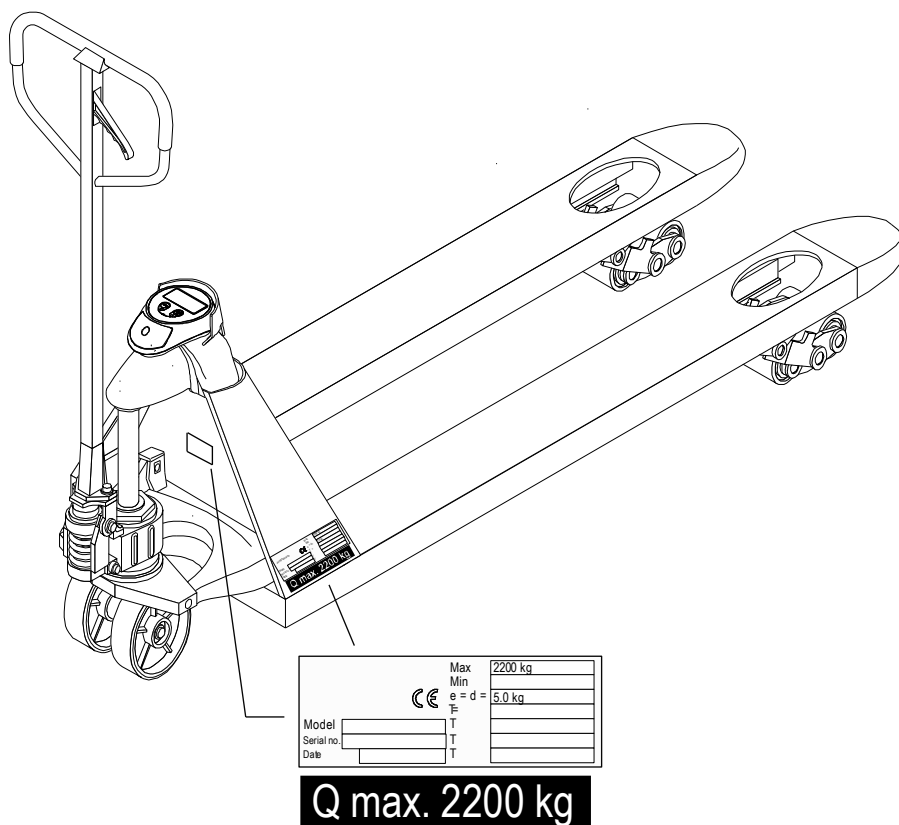


29

Switch off the indicator by keeping both keys simultaneously pressed for 2 seconds.



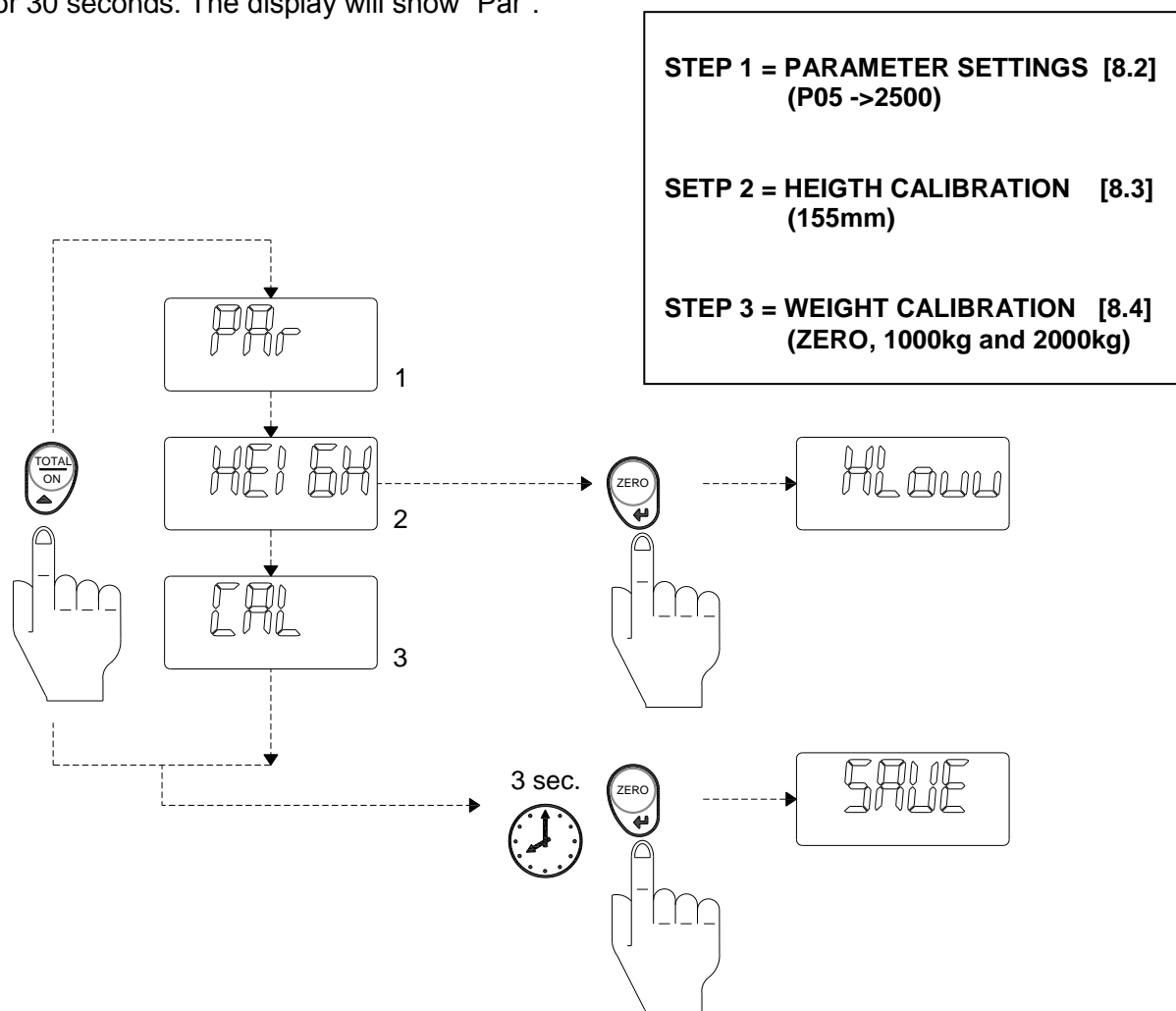
7. Placing the two machine labels



8. Service menu

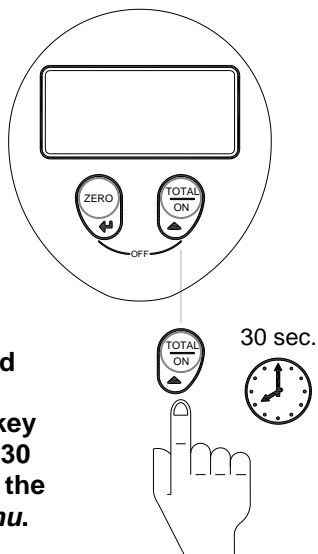
8.1 Service menu set-up

After assembly, go into **SERVICE MENU** by pressing the TOTAL/ON key for 30 seconds. The display will show "Par".

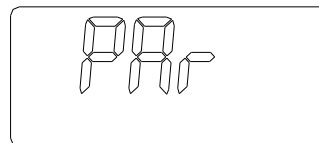


8.2 Parameter settings menu (see step 1, page 12)

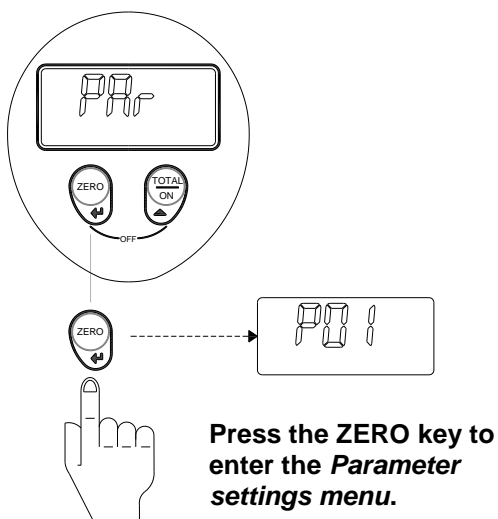
1



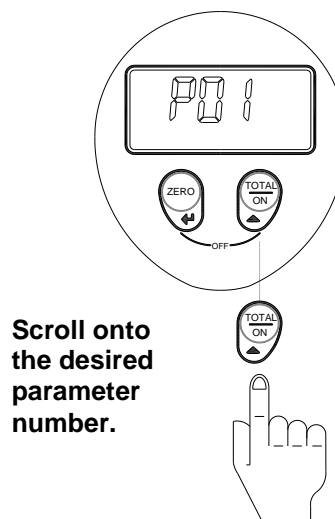
2



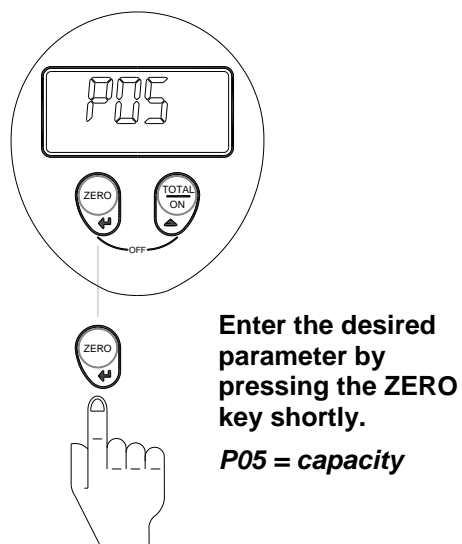
3



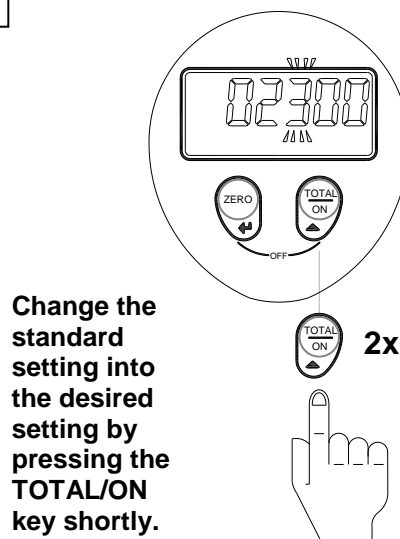
4



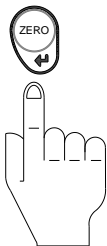
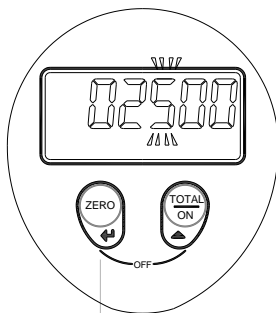
5



6

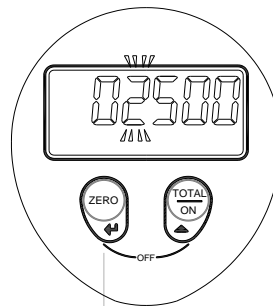


7

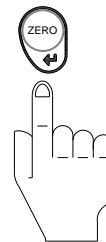


Confirm the entered setting by pressing the ZERO key shortly.

8

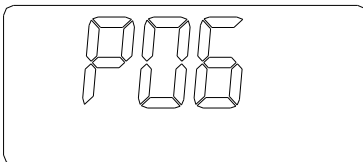


2x



Confirm the entered setting completely by pressing the ZERO key twice.

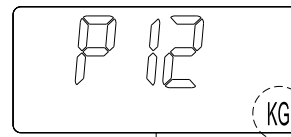
9



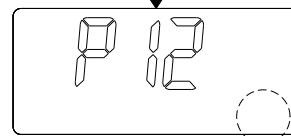
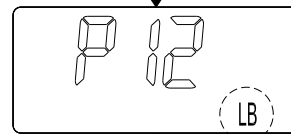
The indicator will go to the next upper parameter.

Scroll to P12 to set the desired weight unit

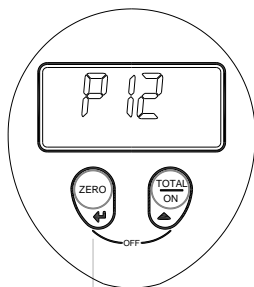
10



Select **KG**, **LB** or **None** and confirm by pressing the ZERO key shortly.



11

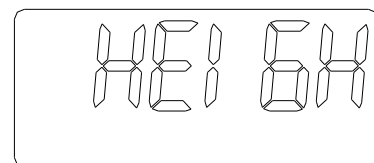


3 sec.



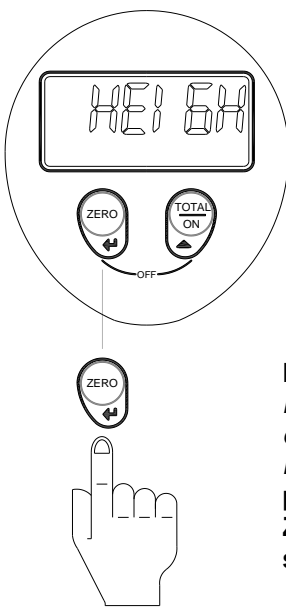
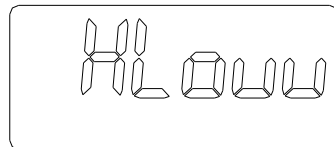
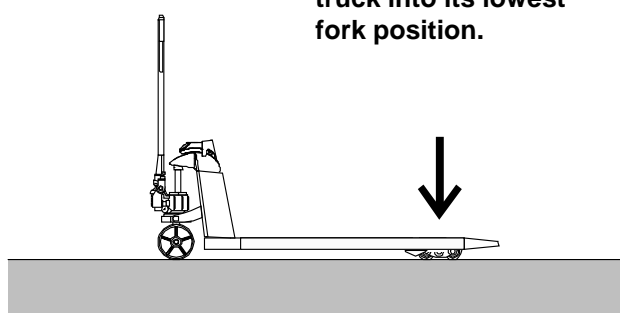
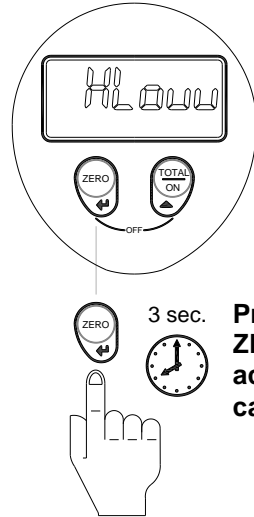
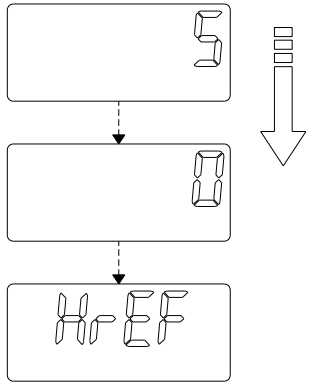
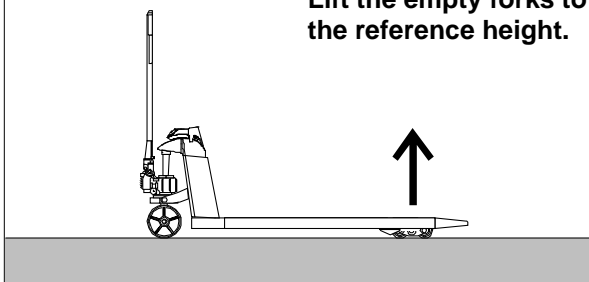
Leave the parameter menu by pressing the ZERO key for 3 sec.

12

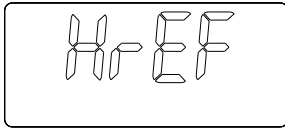


Display has moved to the *Height calibration menu*

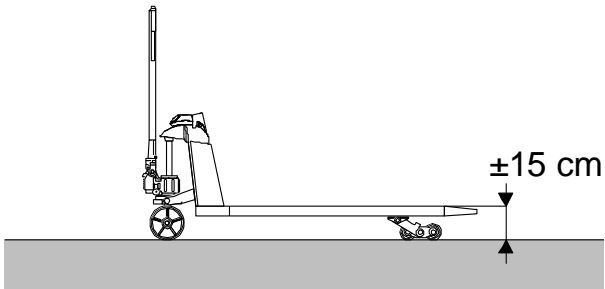
8.3 Height sensor calibration (see step 2, page 12)

<p>1</p>  <p>Enter the <i>height calibration menu</i> by pressing the ZERO key shortly.</p>	<p>2</p>  <p>The display shows “Hlow”, to calibrate the lowest pallettruck position.</p>
<p>3</p> <p>Be sure the forks of the hand pallet truck are empty.</p> <p>Lower the pallet truck into its lowest fork position.</p> 	<p>4</p>  <p>3 sec. Press the ZERO key to activate the calibration.</p>
<p>5</p> <p>After 3 sec the indicator will start count down from 5 to 0 and calibrate the Height sensor.</p> 	<p>6</p> <p>Lift the empty forks to the reference height.</p> 

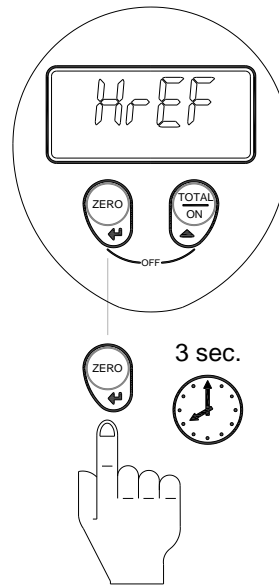
7



The forks are at the reference height.



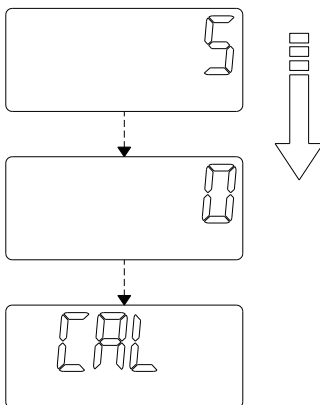
8



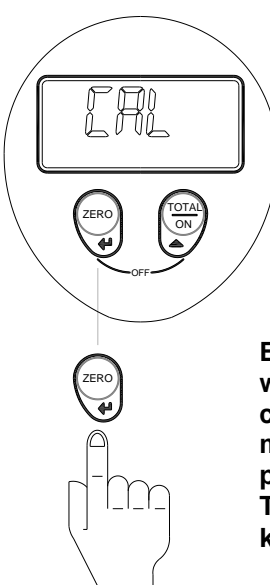
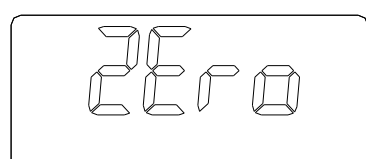
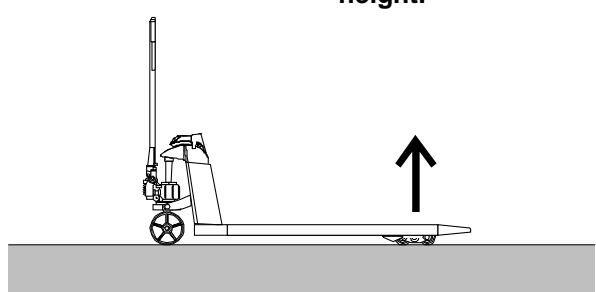
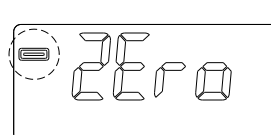
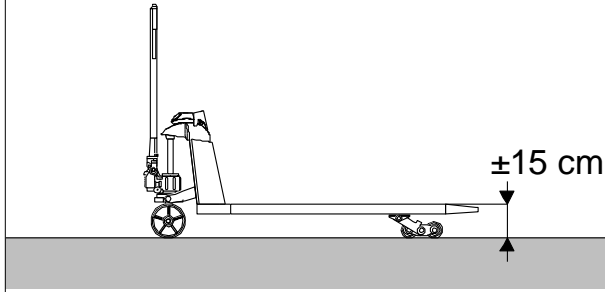
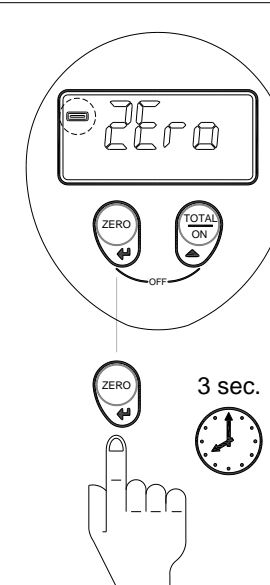
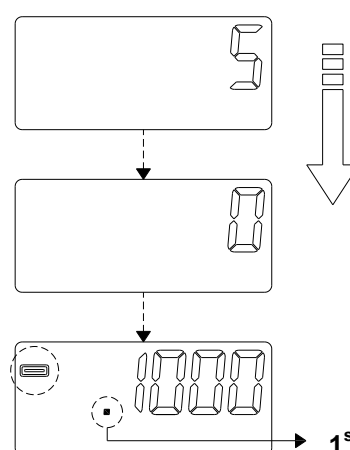
Press the
ZERO key to
activate the
calibration.

9

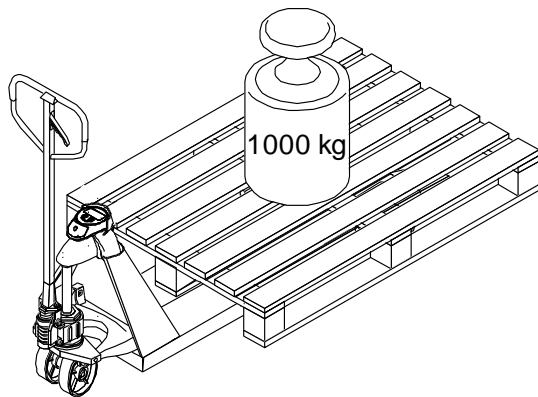
After 3 sec the indicator will
start count down from 5 to 0 and
calibrate the Height sensor.



8.4 Weight calibration (see step 3, page 12)

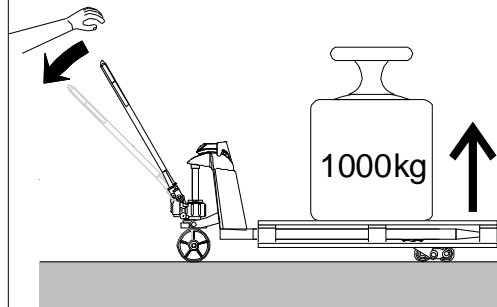
<p>1</p>  <p>Enter the weight calibration menu by pressing the TOTAL/ON key shortly.</p>	<p>2</p> 
<p>3</p> <p>Lift the empty forks to the reference height.</p> 	<p>4</p>  <p>The forks are at the reference height, as shown at the left side of the display.</p> 
<p>5</p>  <p>3 sec.</p>	<p>6</p> <p>After 3 sec the indicator will start count down and calibrate the Weight sensor.</p>  <p>1st calibration point</p>

7

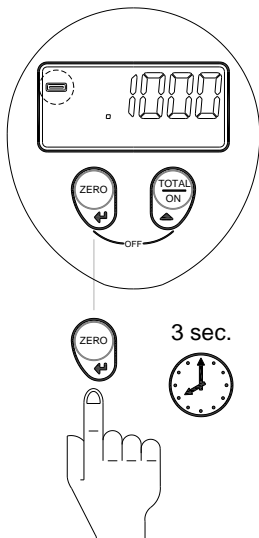


8

Lift the forks to the reference height.



9

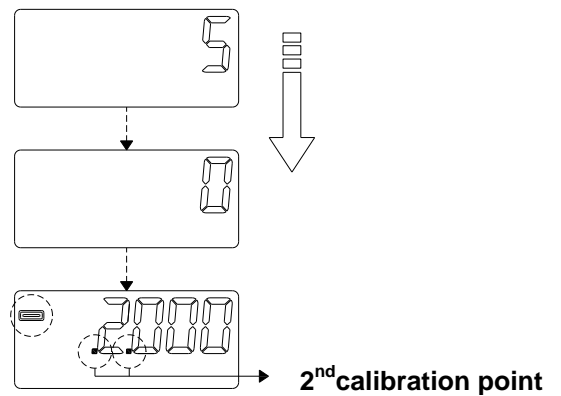


The forks are at the reference height, as shown at the left side of the display.

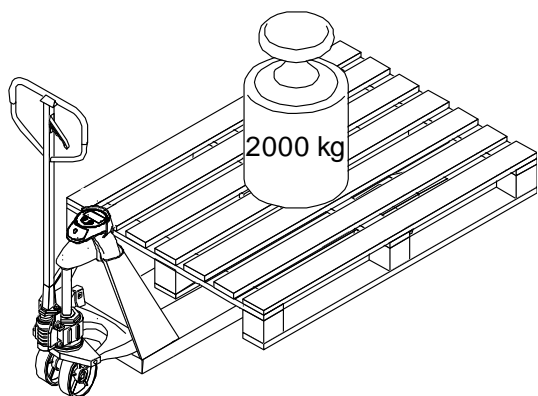
Press the ZERO key for 3 sec. to activate the calibration.

10

After 2 sec the indicator will start count down and calibrate the Weight sensor.

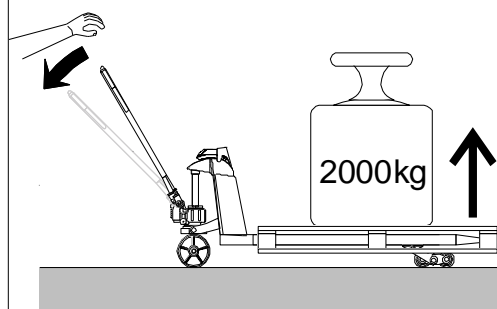


11

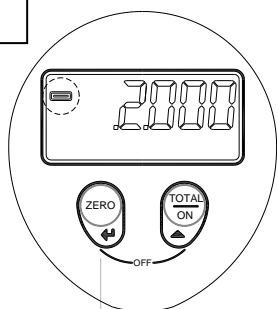


12

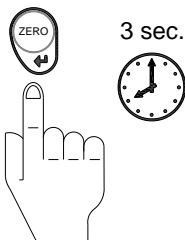
Lift the forks to the reference height.



13



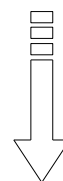
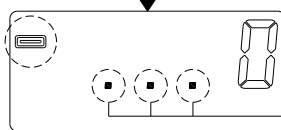
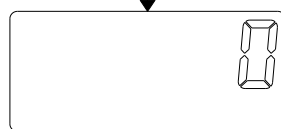
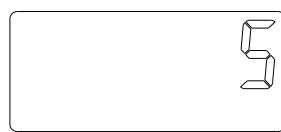
The forks are at the reference height, as shown at the left side of the display.



Press the ZERO key for 3 sec. to activate the calibration.

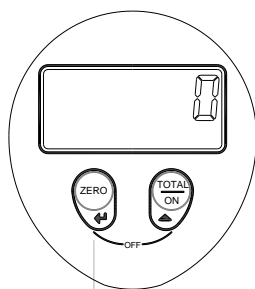
14

After 3 sec the indicator will start count down and calibrate the Weight sensor.



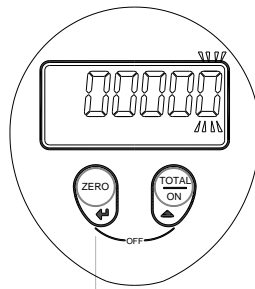
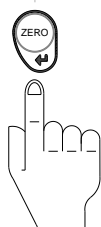
A value of "0" means not active

3rd calibration point



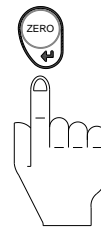
If desired, the 3rd calibration point can be activated.

Press the ZERO key shortly to go into the entry menu.

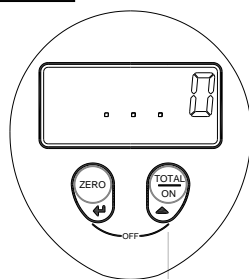


Change the digits by using the TOTAL/ON and ZERO key.

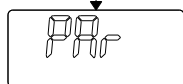
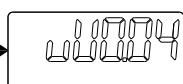
When the desired value has been entered, execute the 3rd calibration point by pressing the ZERO key 3 sec.



15

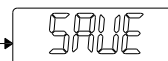
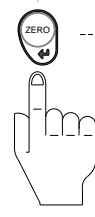
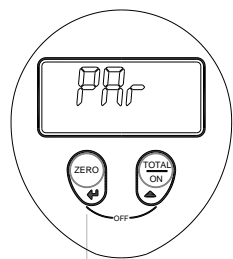


The indicator will save the new weight calibration, show for example the text "uV0.04" and show the text "Par" afterwards.



16

Now, the menu can be left and saved by pressing the ZERO key 3 sec. And go back to the weighing mode.



9. Parameterlist software IN-RAV-1-3V (LIST)

Par Nr.	Function	Settings	Factory defaults	RAVAS-1	Option Quicklift
P 01	Delay time peakhold in seconds	0 /9	5		
P 02	Smallest graduation step	0.1/0.2/0.5/1/2/5/10/20/50/100	5		
P 03	Biggest graduation step *1	0.1/0.2/0.5/1/2/5/10/20/50/100	5		
P 04	multi interval per 100-graduation steps	0000-9900	200		
P 05	overload (full scale) per 100-graduation steps	00000-99900	2300	2500	
P 06	motion detection in div/sec.	0/1/2/3/4/5/20/50/100/200/500	4		
P 08	auto shut-off time in minutes	0 t/m 99 (0 = off)	2		
P 10	Zerotrack on/off	0 = off en 1 = on (0.5div/sec)	0	0	
P 12	Start-up unit	None, kg, lb	kg		
P 17	Application	0 = standard 1 = peakhold	0	0	
P 18	g-sensor connected for height indication?	Yes or No	Yes		
P 19	Flashing mode display active?	Yes: the digits that show the weight will be flashing in the display, when forks are not on reference height. No: the digits that show the weight will always be shown continuously	Yes		
P 20	Buffer size for filtering g-sensor input	0/2/4/6/8/10/12	8	4	
P 30	Top height-range1 in %	1-99%	60		50
P 31	Top height-range2 in %	1-99%	82		75
P 32	Bandwidth range4 in % from H-ref	0.5/1.0/1.5/2.0/2.5/3.0/3.5/4.0/4.5/5.0/5.5/6.0/6.5/7.0/7.5/8.0/8.5/9.0/9.5/10.0%	4		4.5
P 90	Reset all parameters to factory default settings				
P 91	Low bat level in Volts	0.8/1.0/1.2/1.4/1.6/1.8/2.0/2.2/2.4/2.6/2.8/3.0	2.0		
P 92	Low Batt Low bat sign will be blinking during low battery	0 = indicator not automatically off because of low-bat 1 = indication off after 1 min	1		
P 93	Main function Key nr. 2	0 = Totalization functions disabled 1 = Totalization functions enabled	1		
P 99	Software number		001		

10. Wiring diagram

