

# BP200

Capacity 200 kg



**GB**

## **User's guide**

Pallet Truck



**NH Handling A/S**

Fanøvej 14  
DK-8800 Viborg - Danmark  
Tel.: +45 70 27 01 60  
Fax: +45 70 27 01 61  
E-mail: [nh@nh-handling.dk](mailto:nh@nh-handling.dk)  
[www.nh-handling.com](http://www.nh-handling.com)

**IMPORTANT:** Never use this equipment before having read and understood this instruction.

1. Do not exceed max. capacity of 200 kg.
2. The pallet truck is constructed for transport of 1/4 pallets on horizontal hard level surfaces. Use on other than hard level surfaces can result in instability and possible loss of load.
3. Place the load safely on the middle of the forks or the load may fall off or cause overload.
4. In case of danger of fire or explosion do not employ the pallet truck.
5. Do not employ the pallet truck for transport of persons.
6. The pallet truck is not to be modified.
7. Failure to heed these warnings may result in pallet truck instability, damage or failure which may cause personal injury or property damage.
8. Operation temperature from - 10°C to + 50°C.

### **Specifications:**

<b>Capacity:</b>	200 kg.
<b>Fork length:</b>	580 mm
<b>Fork width:</b>	225 mm
<b>Weight:</b>	26 kg

### **Use of the Pallet Truck:**

Lifting:	Step down pedal pos. 13 until the lifting device locks in the upper position.
Lowering:	Step pedal pos. 13 and release pedal pos. 14 at the same time. When the lifting device is released set your foot following the weight down.

### **Max. required pedal force for lifting:**

95 N with a load of 50 kg
190 N with a load of 100 kg
285 N with a load of 150 kg
380 N with a load of 200 kg

### **Maintenance:**

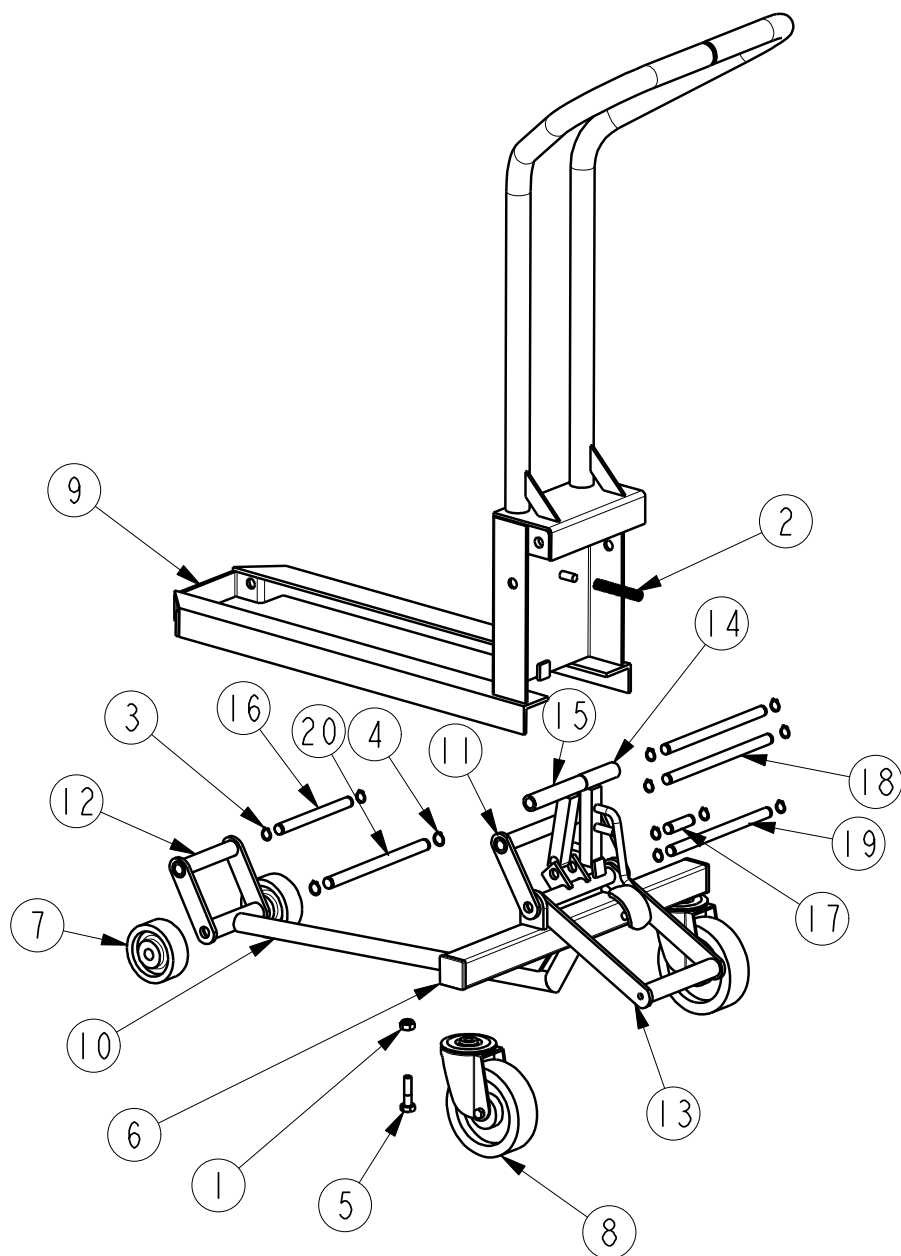
**Cleaning:** Steam jets, degreasers and high-pressure cleaners should be used with great caution to avoid degreasing.

**Daily:** Inspect pallet truck for damage.

**Monthly:** Treat all movable parts with lubricating oil.

### **Destruction:**

Demounted parts must be legally disposed of.



20	1	88 015 00_E	Shaft for Lifting Device
19	2	88 014 00_E	Shaft for Lifting Device
18	1	88 013 00_E	Shaft for Lifting Device
17	1	88 012 00_E	Shaft for Lifting Device
16	1	88 011 00_E	Shaft for Lifting Device
15	1	88 008 00_E	Lever kp.
14	1	88 006 00_E	Release Pedal kp.
13	1	88 005 00_E	Pedal kp.
12	1	88 004 00_E	Rocker Arm narrow
11	1	88 003 00_E	Rocker Arm broad
10	1	88 002 00_E	Chassis kp.
9	2	88 001 00_E	Lifting Device kp.
8	2	02 709 00	Revolving wheel
7	2	02 708 00	Wheel ø80
6	2	02 372 00	Plug
5	2	02 318 00	Bolt M10x40
4	2	02 224 00	Locking Ring
3	10	02 203 00	Locking Ring
2	1	02 050 00	Spring
1	2	02 003 00	Mutter M10
<b>Pos.</b>	<b>Pc.</b>	<b>Nb.</b>	<b>Description</b>

## Directive 2006/42/EC



**(GB) Pallet truck,  
model BP200**

are in conformity with the provisions of the Machinery Directive (Directive 2006/42/EC and DS/EN 3691-5) as amended and with national implementing legislation.



Viborg 01.01.10

*Søren Christensen*  
Søren Christensen  
General Manager