

ORIGINAL INSTRUCTIONS TRANSLATED
ENGLISH EDITION, VERSION 01, APPLICABLE FROM 1 January 2018

PALLET TRUCK

OPERATING INSTRUCTIONS
MAINTENANCE MANUAL
DECLARATIONS OF CONFORMITY



PALLET TRUCK

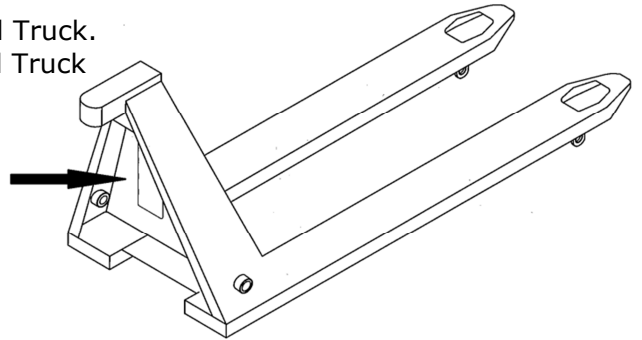
BASIC INFORMATION

Manufacturer: Ole Almeborg a/s, Svalhøjvej 15, DK-3790 Hasle, Denmark,
tel. (+45) 5693 3600.

Designation: Pallet Truck, types JUN-

Lifting capacity: See Type sign inside the top of Hand Truck.

Net weight: See Type sign inside the top of Hand Truck



RECEIVING THE PRODUCT

On receipt of the product, it is important to inspect it immediately for any signs of damage that may have occurred in transit. If any damage is discovered, contact the distributor or supplier and do not use the pallet truck until the distributor or supplier has been notified about the damage and the extent of it.

MALFUNCTION AND DAMAGE

In the event of any malfunction or damage to the truck, contact the supplier or the distributor.

NOTE:

For safety reasons, all service and maintenance must be performed by a technician certified to do so.

BEFORE USING THE PRODUCT

The manual must be read and understood by the operator before he/she starts to use the pallet truck, as it is crucial for the operator to be familiar with the pallet truck's function, capacity and loading methods.



WARNING!

If the precautions specified are not followed, there is a risk of accidents which may entail severe bodily injury and could possibly be fatal.

TRANSPORTING THE PALLET TRUCK

To lift the pallet truck, attach authorized lifting equipment to the front crossbar or upper section. The lifting must be balanced by attaching straps to the fork tips. Note that, when lifting the pallet truck, the plunger shaft can be extended to its maximum length. This will not damage the pallet truck. For transporting the truck on a lorry, it is recommended that the truck be attached to an EUR-pallet.

PALLET TRUCK

SAFETY EQUIPMENT

Safety footwear must always be worn when using the pallet truck. For service and repair, safety goggles/glasses must also be worn.

The operator must not wear loose objects such as necklaces, finger rings, a scarf, etc., as these can get caught in the truck, thereby exposing the operator to danger.

The pallet truck may be used for transporting pallets in an ordinary production environment.

PRODUCT DESCRIPTION

The truck is described as a pallet truck designed for transporting EUR-pallets.

The pallet truck is designed for use in an ordinary production environment. The floor must be smooth, hard and level, e.g. concrete or asphalt. The user must make sure that the floor can support the pallet truck, including with its total maximum load.

USING THE PRODUCT

Permitted utilisation:

The pallet truck may be used for transporting pallets in an ordinary production environment.

Unacceptable utilisation:

The pallet truck may not be used as a scooter or for transporting people.

The pallet truck is stable on a level surface, but may not be used on angled surfaces where there is a risk that it could slide or tip over. In addition, the truck may not be used in very cold areas or in areas exposed to high temperatures as this could cause the pump to malfunction, thus exposing the operator or other people to danger.

HANDLING AND START-UP

Before using the truck, it is important for the operator to read and understand the user instructions.



OPERATOR'S POSITION

The operator must always position himself/herself in front of the towbar both during transport and when operating the pump.

WARNING DURING OPERATION

Check to see whether anyone is in the area where you are planning to use the pallet truck.

PALLET TRUCK



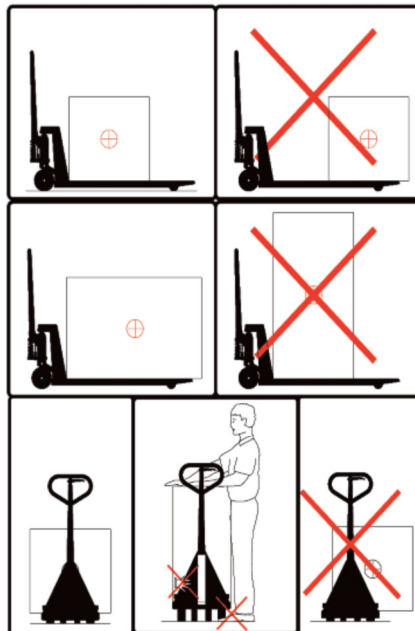
Warning FOR OPERATING THE RAISING/LOWERING FUNCTION:

There is a risk of being crushed under forks and pallets. Make sure that no one else is nearby when lowering the truck. Always position your hands on the top of the handle when operating the truck and always use both hands to operate the truck.

THE LOAD

- Know and be aware of the weight of the load and how it is positioned, to ensure that the maximum load limit is not exceeded.
- Make sure the load is stable and correctly positioned on the forks. The pallet truck may only be operated with a load if the load is stable and secured, so that any loose objects cannot fall off. Do not convey tall loads on the pallet truck.
- Do not convey tall loads on the pallet truck.
- Be aware of the condition of the floor surface, i.e. whether it is even and smooth, whether there is an incline or a decline, as failing to observe this could cause a dangerous situation.
- Do not operate the pallet truck on catwalks or other unstable surfaces.
- Avoid high speeds when turning.

POSITIONING THE LOAD



PALLET TRUCK

OPERATING INSTRUCTIONS

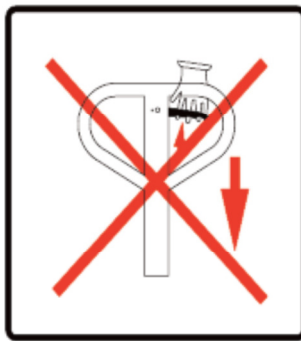
The pallet truck's towbar is also used as a pumping bar. A built-in valve enables the towbar to be placed in the desired position simply by slowly moving this.

If the operator wishes to lift the load, the towbar must be moved quickly. If the operator wishes to lower the load, pull carefully on the towbar's release lever, which activates this function. The adjustment of the lowering function is continuously variable. The upper section has been added to the drawing shown here, to indicate the above functions.



WARNING FOR OPERATING THE RAISING/LOWERING FUNCTION

There is a risk of being crushed under forks and pallets. Make sure that no one else is nearby when lowering the truck. Always position your hands on the top of the handle when operating the truck and always use both hands to operate the truck.



Always park the pallet truck with the forks in the lowest position. Always park the truck on an even, level surface to prevent it from unintentionally rolling into areas where it could endanger other people.

PALLET TRUCK

INSPECTION AND MAINTENANCE



WARNING!

During service and maintenance, there is a risk of being crushed by movable parts of the truck. Be sure to correctly chock the truck in a stable location while servicing it, to prevent sudden movements of the truck.

DAILY INSPECTION

For safety reasons, the operator should inspect the truck on a daily basis for wear and damage.

Special attention is drawn to the following components:

- Loose axles caused by damaged bolts, nuts or tubular pins
- Ruptures or cracks in the chassis
- Ruptures or cracks in the towbar
- Bent compression bars
- Wheels and auxiliary rollers must be intact and must be able to rotate freely
- Make sure no cloths, strip waste or other items are wound around the hub of the wheel or auxiliary rollers.

WEEKLY INSPECTION

For continuous operation, all movable parts should be inspected and lubricated with SAE 30 motor oil at least once a week. Ordinary bearing grease should be injected into the lubrication points equipped with a grease nipple.

MONTHLY INSPECTION

Check the level of oil in the hydraulic system once a month. If the pump lacks oil, this is usually discovered from oil residue on the truck or when the truck cannot be pumped up to the top position.

OIL

The hydraulic system contains 0.25 litres of oil. Replenish with oil at the top of the pump housing. At temperatures between -35°C and $+40^{\circ}\text{C}$, use oil certified to ISO 32 with a viscosity index of at least 150.

For continuous operation at lower temperatures, it may be advisable to use a thin low-temperature oil.

LUBRICATING THE TOWBAR

On the towbar, lubricate the release chain, the pin on the release lever and the pin at the lowering valve lever.

PALLET TRUCK

INSPECTION AND MAINTENANCE PLAN

	Daily	Weekly	Monthly
Cleaning	•		
Inspect for damage and ruptures	•		
Lubrication		•	
Oil level, pump			•

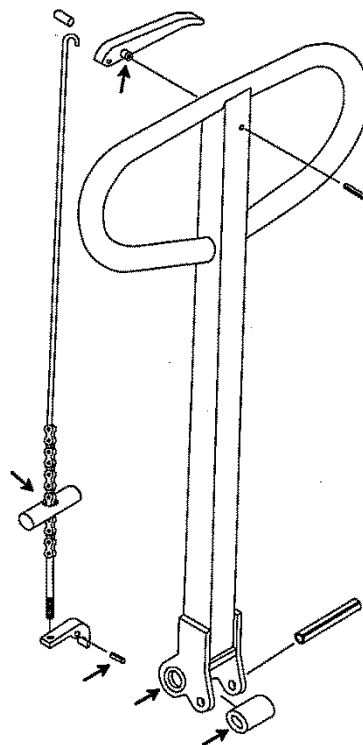
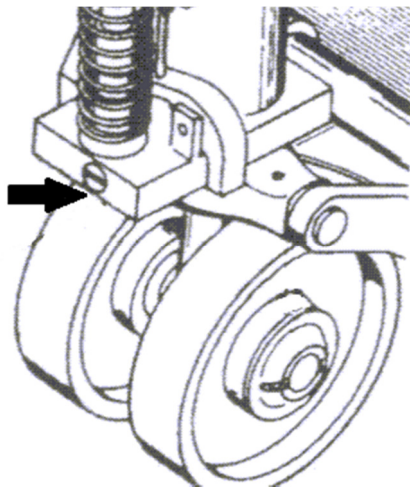
LUBRICATING THE PUMP TOWBAR

NOTE:

To achieve correct lifting and lowering, the chain drive in the towbar must be preset so there is 0.4 mm (± 0.1 mm) between the release pin and the lowering-valve lever, regardless of where the towbar is positioned.

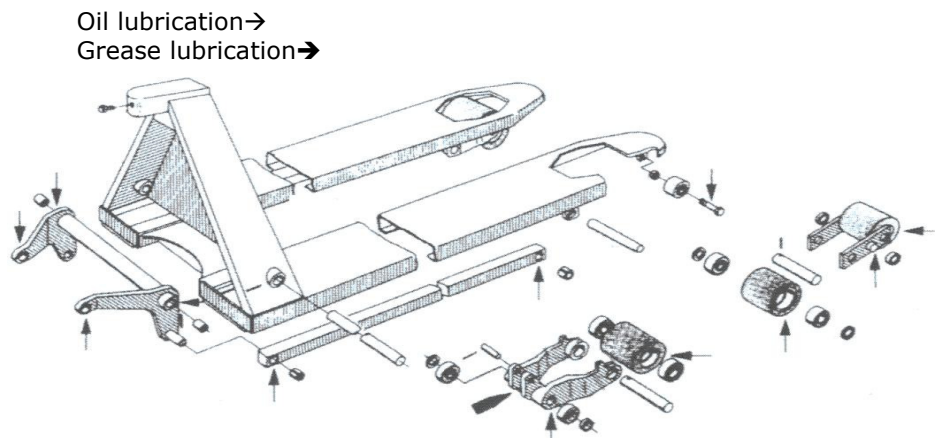
Oil lubrication→

Grease lubrication→



PALLET TRUCK

LUBRICATING THE CHASSIS



CLEANING

The environment in which the truck is used determines the cleaning frequency. It is recommended to assess the need for cleaning based on the current rules in the company. The pallet truck can be cleaned with warm water and automobile detergent or similar. After cleaning, wipe down the truck and lubricate the movable parts (see the section concerning maintenance and lubrication).

DISPOSING OF THE TRUCK

The pallet truck, this must be disposed of in accordance with applicable rules at the time of disposal. Contact your local environmental station for further details, if necessary.

THE PAINTED TRUCK CONTAINS THE FOLLOWING MATERIALS

- Chassis: painted steel
- Towbar: painted steel
- Lever arms: painted steel
- Wheels: nylon, polyurethane or rubber
- Bearings: chrome steel
- Bushings: polyacetal, nylon, brass
- Pump housing: painted steel, hydraulic oil, polyacetal, nylon, copper, steel containing chromium, stainless steel, polyurethane and nitrile rubber.

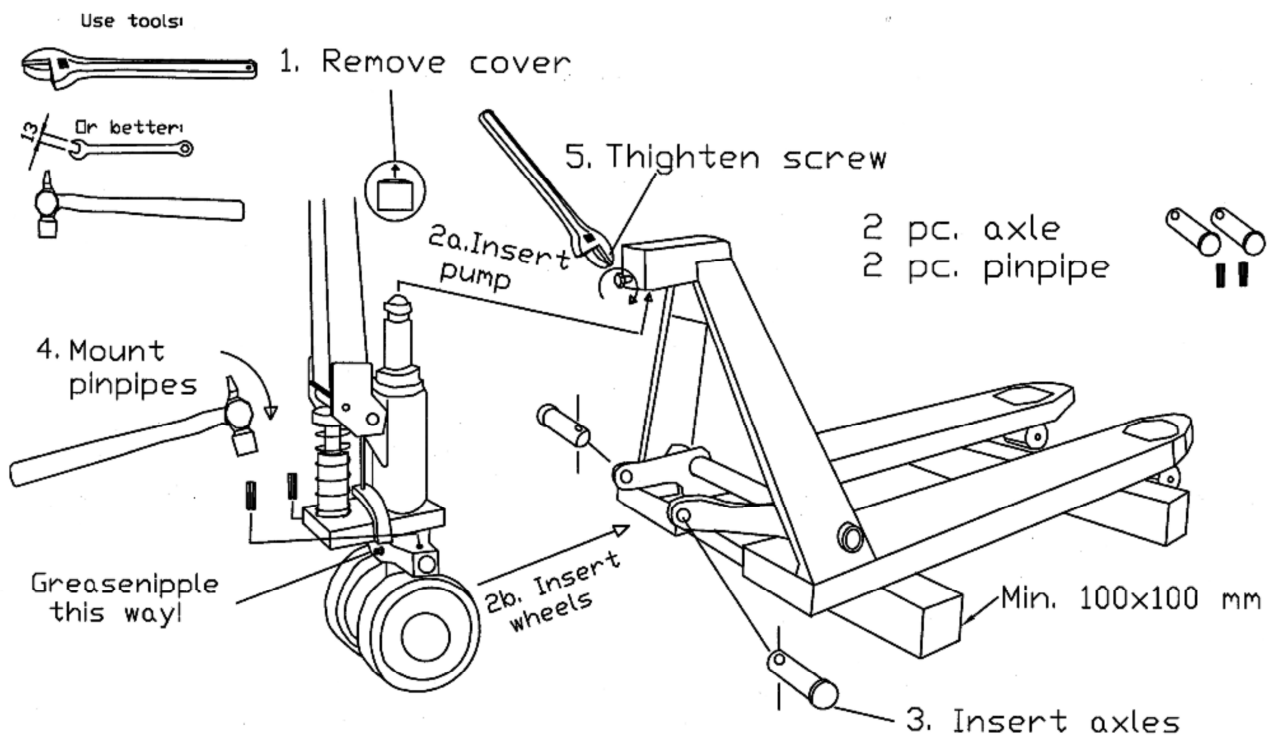
THE STAINLESS TRUCK CONTAINS THE FOLLOWING MATERIALS

-
- Chassis: stainless steel
- Towbar: stainless steel
- Lever arms: stainless steel or galvanized steel
- Wheels: nylon, polyurethane or rubber
- Bearings: stainless chrome steel
- Bushings: polyacetal, nylon, brass
- Pump housing: stainless steel, or galvanized steel hydraulic oil, polyacetal, nylon, copper, steel containing chromium, stainless steel, polyurethane and nitrile rubber.

PALLET TRUCK

ASSEMBLY PROCEDURE FOR PALLET TRUCKS PACKAGED FOR EXPORT

- Place the pallet truck on solid chocks (minimum height: 100 mm)
- Remove the protective cover from the piston and place the piston under the thrust pad/upper section.
- Place the crossbar between the lever arms and insert the axles.
- Insert pins into the axles.
- Tighten the screw in the thrust pad/upper section.
- Remove the chocks and pump the towbar a few times to bleed the hydraulic system.
- The pallet truck is now ready for use



PALLET TRUCK

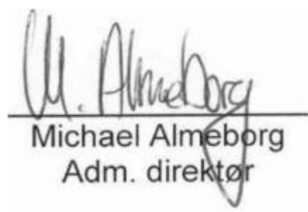
COMPLIANCE STATEMENT:

EU DECLARATION OF CONFORMITY, ENGLISH VERSION (UK)

The undersigned – Ole Almeborg a/s, Svalhøjvej 15, DK-3790 Hasle, Denmark, tel. (+45) 5693 3600, www.almeborg.com – hereby declares that this machine has been manufactured in conformity with the relevant provisions of the Machinery Directive, 2006/42/EC, of 17 May 2006.

Product name: Pallet Truck
Model -ID no.:
JUN-449

Surname: Almeborg
First name: Michael
Position: Director
Hasle, Bornholm, DK / 1. January 2018



Michael Almeborg
Adm. direktør

