

- + Robust stainless steel container
- + Powerful turbines
- + Washable filter elements



Wet / dry vacuum cleaner

These wet / dry vacuum cleaners are extremely robust and reliable. They are the perfect solution for a wide range of professional cleaning applications in industry and workshops.

The tilting frame and push handle combined

with 2 non-marking steering and fixed castors, make these cleaners very easy to handle. The washable filter elements reduce running costs.

Very quick switching from wet to dry suction: The fastener allows the motor head to be

removed and the filter installed easily.

High air volumes ensure a great suction power. The 70 and 80 litre versions have 2 and 3 individually connected motors respectively, which enable the suction power to be controlled.

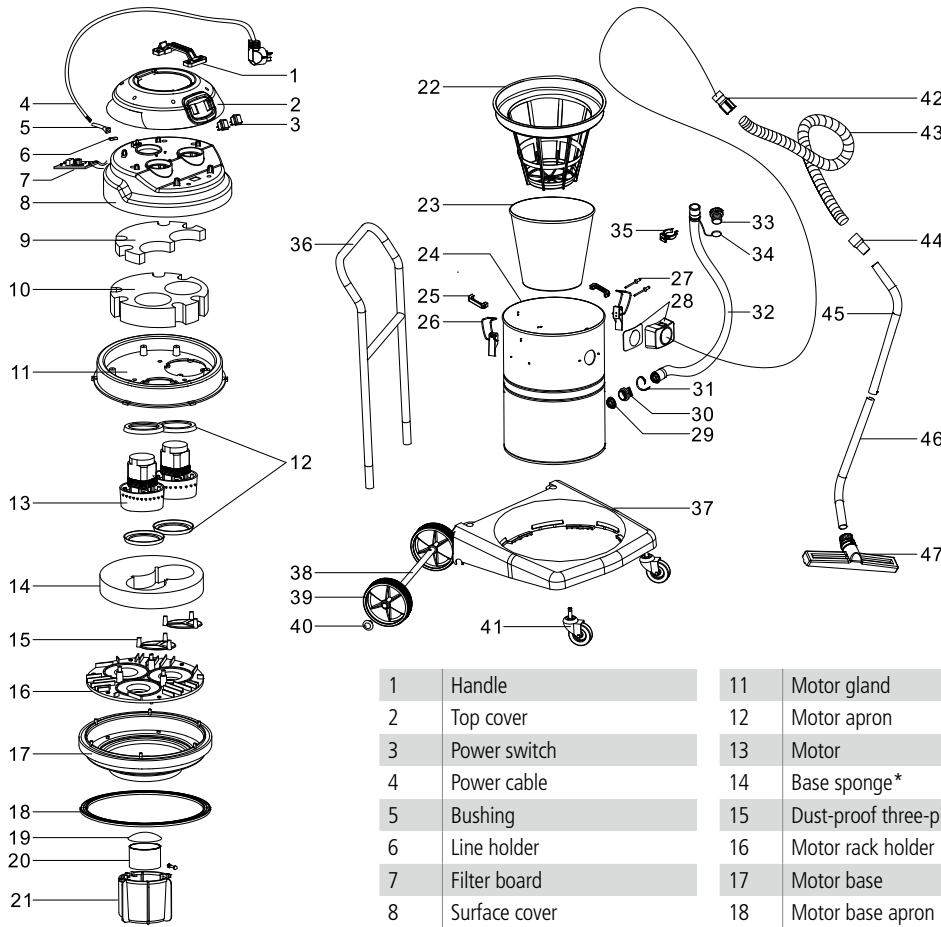


Product film
online



72 h delivery

Wet / dry vacuum cleaner



1	Handle	11	Motor gland
2	Top cover	12	Motor apron
3	Power switch	13	Motor
4	Power cable	14	Base sponge*
5	Bushing	15	Dust-proof three-pin pad*
6	Line holder	16	Motor rack holder
7	Filter board	17	Motor base
8	Surface cover	18	Motor base apron
9	Sponge 1	19	Buoy cover
10	Sponge 2	20	Big buoy

21	Big buoy rack
22	Cloth filter apron
23	Cloth filter
24	Stainless steel container
25	Handles*
26	Container buckle assembly
27	Core pulling nail*
28	Square connector assembly
29	Drain hose nut*
30	Drain hose connector*
31	Hose clamp*
32	Drain hose*
33	Drain hose piston*
34	Drain hose double O-aprons*
35	Drain hose hook*
36	Handrail
37	Frame base
38	Frame axle
39	Big rear wheel
40	Axle stopper
41	Frame front wheel
42	Big short connector
43	70L suction hose
44	Big long connector
45	Big metal tube A
46	Big metal tube B
47	Big dry floor nozzle assembly

* Only for 2 or 3 motor versions



Technical Data

Wet / dry vacuum cleaner technical data, issue 3/2014

	1	2	3
Motors	1	2	3
Power W	1500	2 × 1200	3 × 1000
Capacity litres	30	70	80
Suction	Wet/dry	Wet/dry	Wet/dry
Dimensions L×W×H mm	500×460×770	600×520×900	600×520×980
Suction hose length m	2.5	2.5	2.5
Suction nozzle port Ø mm	40	40	40
Max. air flow litres/sec.	48	106	120
Max. suction power mmWS	2200	2500	3200
Rated voltage V~, Hz	220–240, 50/60	220–240, 50/60	220–240, 50/60
Cable length m	7.2	7.2	7.2
Safety rating	IPX4	IPX4	IPX4
Weight incl. accessories kg	13.7	22.1	25.1



1500 W, 30 litre container volume

2400 W, 70 litre container volume,
2 individually connected motors

3000 W, 80 litre container volume,
3 individually connected motors

Benefit from the advantages

Drain hose

Easy and complete discharge of the container. With the 70 and 80 litre versions liquids can be drained into a deeper lying container.



Textile filter

The fastener allows the motor head to be removed without the need for tools. The washable filter element can now be easily removed or inserted again.



Robust push handle and tool tray

Overall easy handling. Keep the tools to hand and save time. Bracket for the rolled up cable.



Accessories

All vacuum cleaners come with washable filter elements, 2.5 m suction hose, metal suction tube, corner nozzle, brush nozzle, wet and dry floor nozzles, 7.2 m long power cable.



Powerful turbines

The suction power is controlled by individually connected motors in the 70 and 80 litre versions (2 and 3 motors respectively).



Non-marking steering and fixed castors

2 large fixed and steering castors for easy transport. Grey, non-marking wheels.